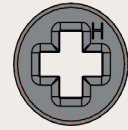
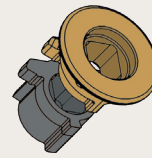




**PANOLOCK+**  
MULTI-POINT LOCK

**POWERED BY**  
**ENDURA**



# EMTEK®

## Deadbolt & Handle-Set Compatibility Guide

Description	Item No.	Configuration	Handleset Adapter	Deadbolt Adapter	Trim Collar Required
8455 Low Profile Deadbolt Single Cylinder	8455US10B	Deadbolt		H	No
#1 Style Wrought Steel Single Cylinder Deadbolt	8461FBS	Deadbolt		H	YES
#2 Wrought Stl.	8452	Deadbolt		H	YES
#3 Wrought stl.	8463	Deadbolt		H	YES
#8	8466	Deadbolt		H	YES
#11 Tuscany	8472	Deadbolt		H	YES
#14 Tuscany	8473	Deadbolt		H	YES
Arts & Crafts	8454	Deadbolt		H	YES
Classic Tuscany	8471	Deadbolt		H	YES
Knoxville	8459	Deadbolt		H	YES
Modern Disk	8423	Deadbolt		H	YES
Modern Keyed	8467	Deadbolt		H	YES
Neos	8475	Deadbolt		H	YES
Octagon Tuscany	8360	Deadbolt		H	YES
Quincy	8478	Deadbolt		H	YES
Rectangular	8468	Deadbolt		H	YES
Regular	8450	Deadbolt		H	YES
Regular Sandcast	8450	Deadbolt		H	YES
Rope	8464	Deadbolt		H	YES
Saratoga	8458	Deadbolt		H	YES
Square	8469	Deadbolt		H	YES
Stainless Modern Disc	S50004-SS	Deadbolt		H	YES
Stainless Round	S50002-SS	Deadbolt		H	YES
Stainless Square	S50003-SS	Deadbolt		H	YES
Tuscany Bronze	8356	Deadbolt		H	YES
Urban Modern	8426	Deadbolt		H	YES
Wilshire	8479	Deadbolt		H	YES
Colonial Keyed - 5-1/2" CtC	8990	Cyl.x Knob or Lever	Split Square	H	YES
Delaware Keyed - 5-1/2" CtC	8997	Cyl.x Knob or Lever	Split Square	H	YES
Rope Keyed - 5-1/2" CtC	7991	Cyl.x Knob or Lever	Split Square	H	YES
Wilshire Keyed - 5-1/2" CtC	8821	Cyl.x Knob or Lever	Split Square	H	YES
Adams	4414	Thumb press	Split Square	H	YES
Apollo	4815	Thumb press	Split Square	H	YES
Ares	4817	Thumb press	Split Square	H	YES
Arts & Crafts	4801	Thumb press	Split Square	H	YES
Arts & Crafts Full length	4812	Thumb press	Split Square	H	YES
Baden	4820	Thumb press	Split Square	H	YES
Davos	4818	Thumb press	Split Square	H	YES
Franklin	4413	Thumb press	Split Square	H	YES
Hamden	4213	Thumb press	Split Square	H	YES



**Note:**

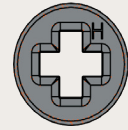
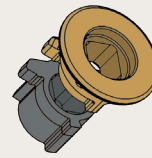
\*Deadbolt trim spacer collars should be included with Emtek locks and must be used with PanoLock Plus.

\*Notify the Emtek lock supplier if the door panel is thicker than 1-3/4".

\*The Split-Square (gold color) adapters are a two-piece adapter where both must be inserted into the handle set drive.



**PANOLOCK+**  
MULTI-POINT LOCK



# EMTEK®

## Deadbolt & Handle-Set Compatibility Guide

Description	Item No.	Configuration	Handleset Adapter	Deadbolt Adapter	Trim Collar Required
Hercules Knurled Full Length	4219	Thumb press	Split Square	H	YES
Hercules Knurled Monolithic	4218	Thumb press	Split Square	H	YES
Hercules Knurled Sectional	4217	Thumb press	Split Square	H	YES
Hercules Smooth Full Length	4216	Thumb press	Split Square	H	YES
Hercules Smooth Monolithic	4215	Thumb press	Split Square	H	YES
Hercules Smooth Sectional	4214	Thumb press	Split Square	H	YES
Imperial	4911	Thumb press	Split Square	H	YES
Jefferson	4415	Thumb press	Split Square	H	YES
Knoxville	4310	Thumb press	Split Square	H	YES
Lausanne	4819	Thumb press	Split Square	H	YES
Marietta	4411	Thumb press	Split Square	H	YES
Melrose	4212	Thumb press	Split Square	H	YES
Monolithic	4611	Thumb press	Split Square	H	YES
Monolithic with Lafayette Grip Tub Ent, Normandy Lever	461111-NRHFBS	Thumb Press	Split Square	H	YES
Nashville	4312	Thumb press	Split Square	H	YES
Orion	4816	Thumb press	Split Square	H	YES
Orleans	4311	Thumb press	Split Square	H	YES
Ribbon & Reed	4711	Thumb press	Split Square	H	YES
Richmond	4313	Thumb press	Split Square	H	YES
Saratoga	4410	Thumb press	Split Square	H	YES
Transitional Heritage Monolithic	4717	Thumb press	Split Square	H	YES
Transitional Heritage Sectional	4716	Thumb press	Split Square	H	YES
Tuscany Monolithic	471112	Thumb press	Split Square	H	YES
Tuscany Sectional	471224	Thumb press	Split Square	H	YES
Urban Modern Sectional	4715	Thumb press	Split Square	H	YES
Wilmington	4314	Thumb press	Split Square	H	YES
Wilshire	4211	Thumb press	Split Square	H	YES



Note:

\*Deadbolt trim spacer collars should be included with Emtek locks and must be used with PanoLock Plus.

\*Notify the Emtek lock supplier if the door panel is thicker than 1-3/4”.

\*The Split-Square (gold color) adapters are a two-piece adapter where both must be inserted into the handle set drive.