



TRILENNIUM®
MULTI-POINT LOCKING SYSTEM



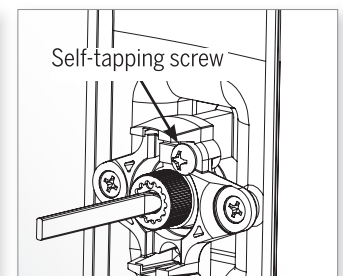
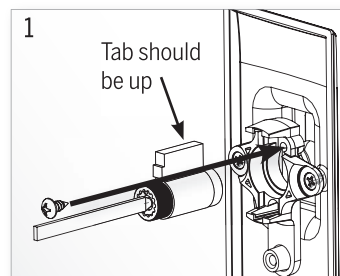
Trilennium® Hardware Cartridge Entry Set Installation Instructions for Swinging and Active French Door Lever Sets.

Check contents and identify all parts before proceeding

Interior Escutcheon:	(1) Individually Packed	Key Cylinder Pack:	(1) Key Cylinder with (2) Keys
Exterior Escutcheon:	(1) Individually Packed		(2) Drive Rods
	(1) Escutcheon Gasket		(1) #8 x 3/8" Self Tapping Screw
Handle Pack:	(2) Lever Handles		(2) #10-32 Mounting Screws
Cartridge Pack:	(1) Left Handed Handle Return Cartridge		
	(1) Right Handed Handle Return Cartridge		
	(4) #6-32 x 1/4" Phillips Head Cartridge Mounting Screws		
	(2) #10-32 Allen Screws for Handles		
	(1) 9/64" Allen Wrench		

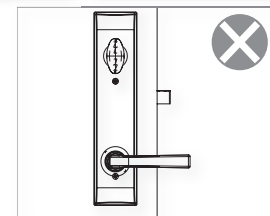
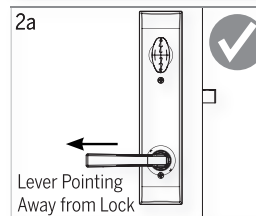
1. PREPARE EXTERIOR ESCUTCHEON

- Remove key from lock cylinder.
- Insert lock cylinder into upper hole from back side of escutcheon plate with tab pointing up. Orient as shown.
- Secure lock cylinder with # 8 x 3/8" self-tapping screw.



2. DETERMINE THE PROPER HANDING OF YOUR HANDSETS

- Identify the handset lever handing on each side of the panel.
- On the escutcheon where the lever points towards the left, use the left hand (LH) cartridge.
- On the escutcheon where the lever points towards the right, use the right hand (RH) cartridge.
- Cartridge handing indicated by sticker. Red "R" for right hand and blue "L" for left hand.



2d

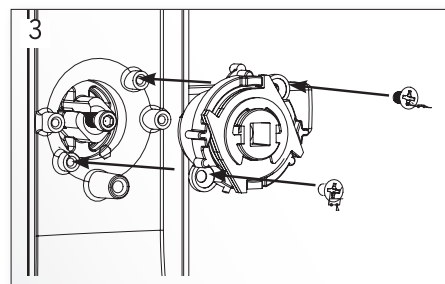


Right Handed Cartridge

Left Handed Cartridge

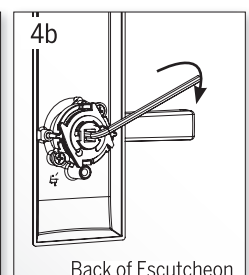
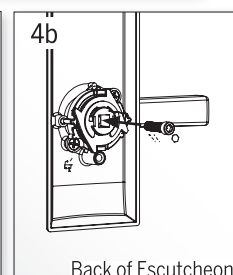
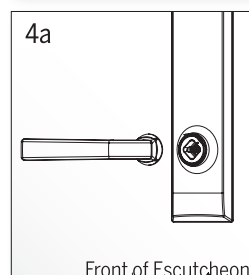
3. ATTACH THE CARTRIDGE TO THE ESCUTCHEON

- Once the proper cartridge for your handle set is determined, insert the cartridge into the lower hole on the back of the escutcheon and secure with the two #6-32 x 1/4" Phillips Head Cartridge Mounting Screws on each escutcheon.



4. ATTACH LEVERS TO ESCUTCHEONS

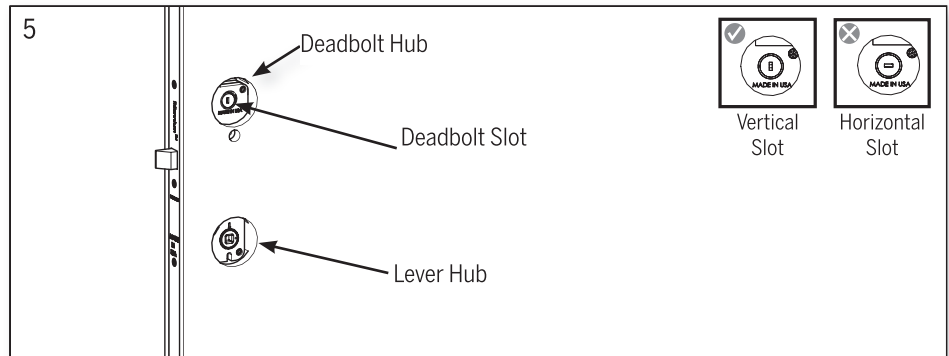
- Insert handle into square recess on the front of the escutcheon and hold in place.
- Insert the Handle Mounting Screw into the center of the cartridge from the back of the escutcheon and hand tighten with the Allen Wrench provided.
- Ensure that the lever is fully tightened.





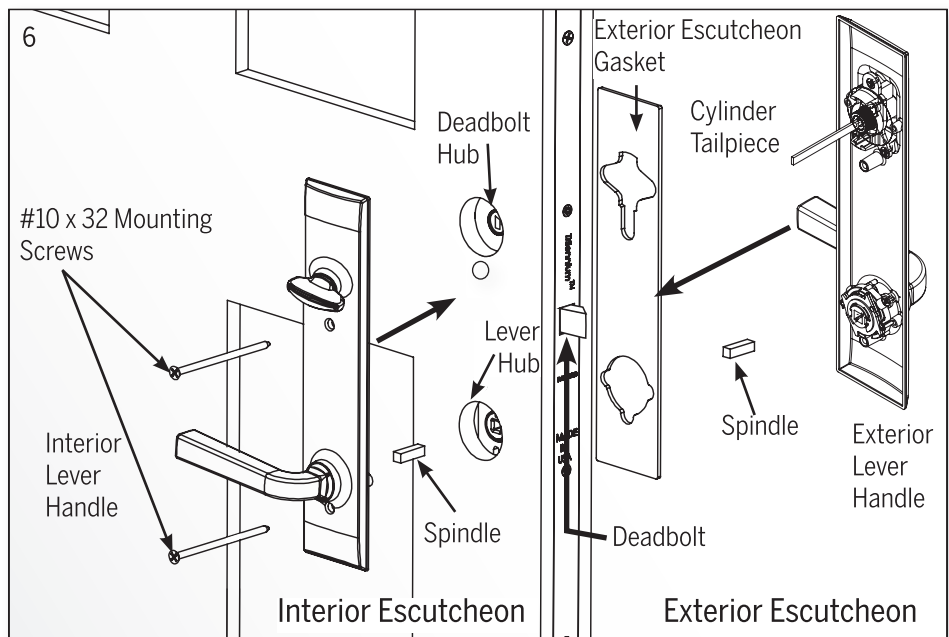
5. CHECK HARDWARE IN DOOR FOR ALIGNMENT OF HUBS

- With the door open, identify the two crossbore holes as the deadbolt hub (upper crossbore) and the lever hub (bottom crossbore).
- Check the following and adjust if necessary:
 - » Deadbolt slot must be vertical.
 - » Bolts must be in latched (not deadbolted) position.



6. POSITION ESCUTCHEONS TO DOOR PANEL

- Exterior first: Place Escutcheon Gasket over inside face of escutcheon. Guide Cylinder Tailpiece and Spindle into respective hubs in hardware.
- Hold in place.
- Interior next: Make certain that receiving slot in thumbturn lines up with the Cylinder Tailpiece.
- Secure with (2) #10-32 mounting screws from interior to exterior. Hand-tighten snug, DO NOT OVERTIGHTEN.



7. ATTACH STRIKE PLATES TO JAMB (if not already done)

- Use 3/4" screws in top and bottom holes of each strike plate.
- Use long #10 x 2-1/2" screws in center holes. The purpose is to anchor each strike to the rough opening framing for added security. A small pilot hole should be drilled for the long screw.
- NOTE: Solid shimming should be placed behind each strike to allow for firm anchoring to structure.

8. CHECK OPERATION

Follow the below steps without closing the door, then test the steps again with the door closed.

- Turn thumbturn 90° to extend bolts (all three) an additional 1/2" to deadbolted position.
 - » Once the door is closed, all three lock bolts should engage strikes.
- Rotate interior lever downward to disengage bolts and open door. Bolts can also be moved to latched position by turning thumbturn.
- Engage deadbolt again. From the exterior, confirm that the lever cannot rotate and disengage the latches (door is deadbolted). With key, confirm that the door can be unlocked and then opened by rotating the lever downward.