



PANOLOCK[®]+

MULTI-POINT LOCK

PanoLock[®]+ Multi-Point Lock Instructions

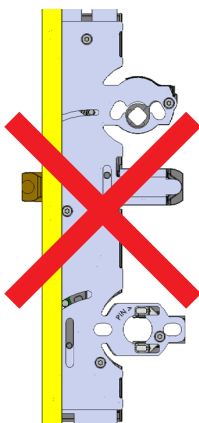
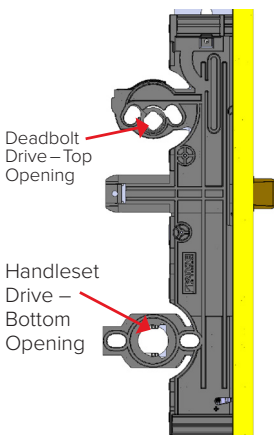
Deadbolt + Handleset Assembly

Choose from the following pages the page that features the handleset adapter that fits your lock.

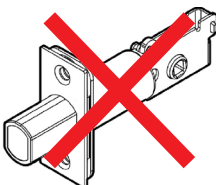
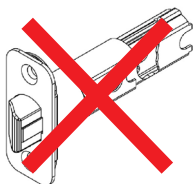
Adapters for the deadbolt and handleset are inserted from the composite side of the lock set, and not the metal side. The composite side can be facing the exterior or interior, depending upon door handing.

Composite Side

Metal Side



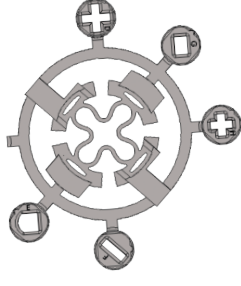
The handleset and deadbolt assemblies supplied with the hardware are NOT used with PanoLock+.



Deadbolt Assembly

Including Square Drive
Handleset Adapter Assembly

STEP 1

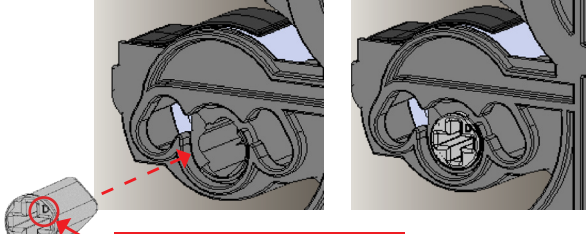


Select the adapter appropriate for the lock brand and type being used.

Deadbolt adapters are marked “D”, “E”, “F”, “G”, and “H”. Remove adapter from the adapter ring.

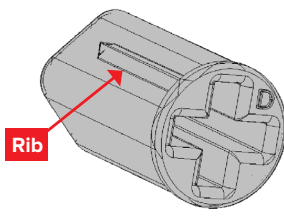
NOTE: If you are replacing an existing handle set, start by removing the existing hardware. If PanoLock is already installed, the appropriate adapter may already be present in the lock.

STEP 2

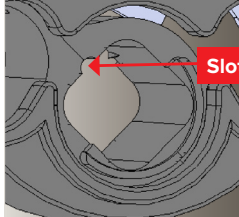


Insert with ID letter on this side.

Insert adapter into top (deadbolt drive) opening.



Rib



Slot

Align rib on adapter with slot in drive opening. Press in until fully seated.

STEP 3

Deadbolt Timing:

To ensure proper operation, time the deadbolt as follows: Partially insert key and rotate as necessary to ensure key and cylinder in upright position. Hold key securely in upright position during timing process.

If lock is engaged/locked (upper and lower bolts fully extended), rotate the tailpiece of the exterior cylinder toward the edge of the door panel (locked position) until it stops.

If lock is disengaged/unlocked (upper and lower bolts retracted), rotate the tailpiece of the exterior cylinder toward the hinges (unlocked position) until it stops.

Assemble deadbolt supplied by deadbolt manufacturer.

Handleset Assembly

STEP 1: CHOOSE YOUR HANDLESET ADAPTER

SQUARE DRIVE ADAPTER



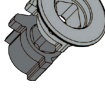
C + GUIDE ADAPTER



DUAL C + GUIDE ADAPTER



SPLIT SQUARE ADAPTER

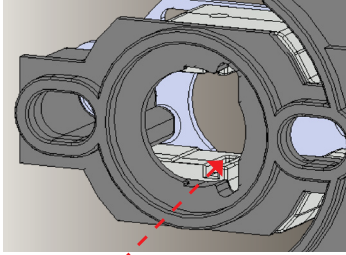


SPLIT DIAMOND ADAPTER



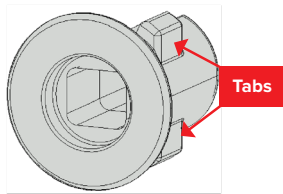
Adapter types are Square Drive, C + Guide, Dual C + Guide, Split-Square and Split-Diamond

STEP 2: INSTALL APPROPRIATE ADAPTER.

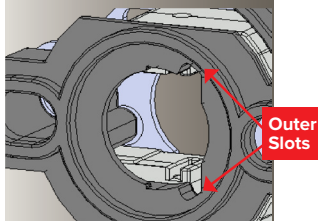


Insert appropriate adapter into bottom (handleset drive) opening.

STEP 3 : SQUARE DRIVE ADAPTER ASSEMBLY

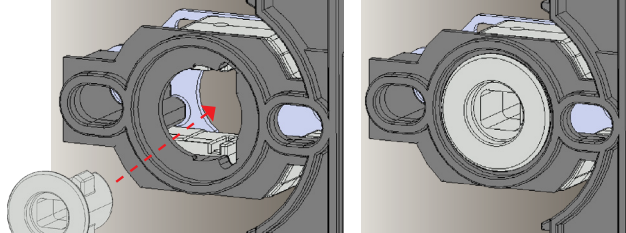


Tabs



Outer Slots

Align tabs on adapter with outer slots in drive opening.



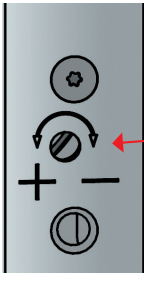
Insert with flange on composite side. Push into handleset drive until insert snaps into place.

STEP 4

Assemble exterior and interior handle set to door with screws supplied by handle set manufacturer.

NOTE: With some thumbpress handle sets it may be necessary to adjust the lock internal spring mechanism to reduce the force needed to depress the thumbpress paddle, or to remove sag in the paddle.

STEP 5

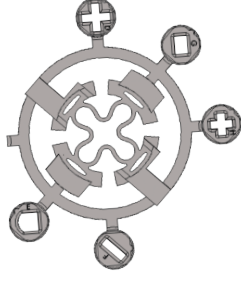


Use a flat head screwdriver to turn adjustment screw as needed to reduce force or remove thumb paddle sag.

Deadbolt Assembly

Including C+ Guide Handset Adapter Assembly

STEP 1

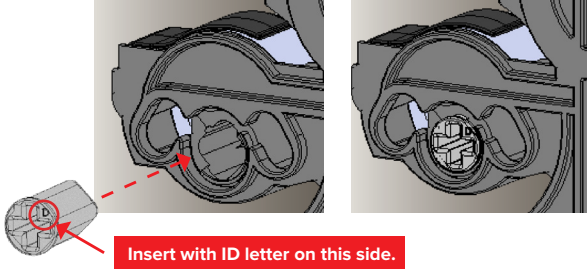


Select the adapter appropriate for the lock brand and type being used.

Deadbolt adapters are marked “D”, “E”, “F”, “G”, and “H”. Remove adapter from the adapter ring.

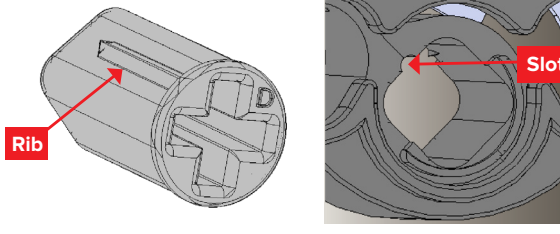
NOTE: If you are replacing an existing handle set, start by removing the existing hardware. If PanoLock is already installed, the appropriate adapter may already be present in the lock.

STEP 2



Insert with ID letter on this side.

Insert adapter into top (deadbolt drive) opening.



Align rib on adapter with slot in drive opening. Press in until fully seated.

STEP 3

Deadbolt Timing:

To ensure proper operation, time the deadbolt as follows: Partially insert key and rotate as necessary to ensure key and cylinder in upright position. Hold key securely in upright position during timing process.

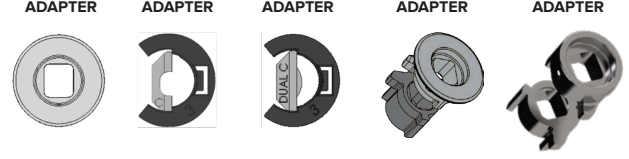
If lock is engaged/locked (upper and lower bolts fully extended), rotate the tailpiece of the exterior cylinder toward the edge of the door panel (locked position) until it stops.

If lock is disengaged/unlocked (upper and lower bolts retracted), rotate the tailpiece of the exterior cylinder toward the hinges (unlocked position) until it stops.

Assemble deadbolt supplied by deadbolt manufacturer.

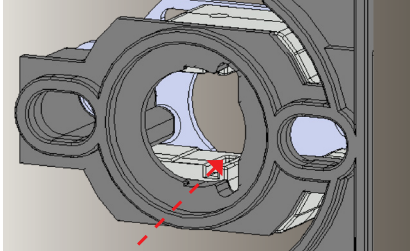
Handleset Assembly

STEP 1: CHOOSE YOUR HANDLESET ADAPTER



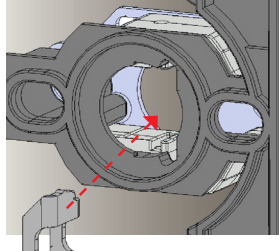
Adapter types are Square Drive, C + Guide, Dual C + Guide, Split-Square and Split-Diamond

STEP 2: INSTALL APPROPRIATE ADAPTER.

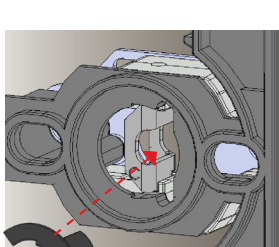
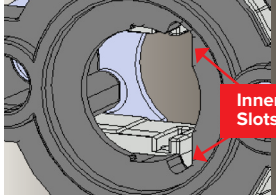
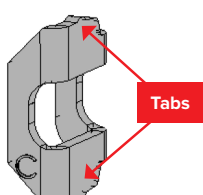


Insert appropriate adapter into bottom (handleset drive) opening.

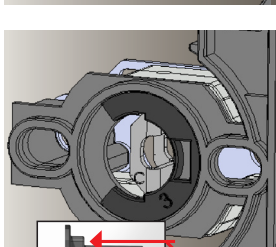
STEP 3 : C + GUIDE ADAPTER ASSEMBLY



Insert with letter “C” on this side and opening on the right side. Do not snap in place.

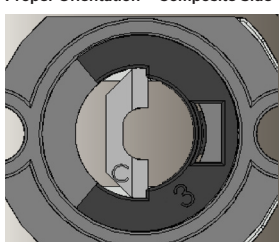


Insert with opening on the left side.



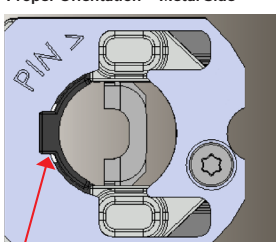
Align tabs on adapter with inner slots in drive opening.

Proper Orientation – Composite Side



After “3” adapter is seated, push “C” adapter with finger to snap into position.

Proper Orientation – Metal Side



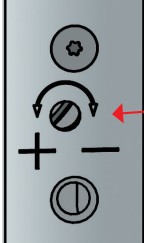
Tab snaps over surface of back face.

STEP 4

Assemble exterior and interior handle set to door with screws supplied by handle set manufacturer.

NOTE: With some thumbpress handle sets it may be necessary to adjust the lock internal spring mechanism to reduce the force needed to depress the thumbpress paddle, or to remove sag in the paddle.

STEP 5

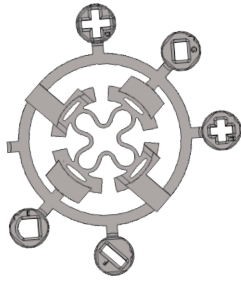


Use a flat head screwdriver to turn adjustment screw as needed to reduce force or remove thumb paddle sag.

Deadbolt Assembly

Including Dual C+ Guide
Handleset Assembly

STEP 1

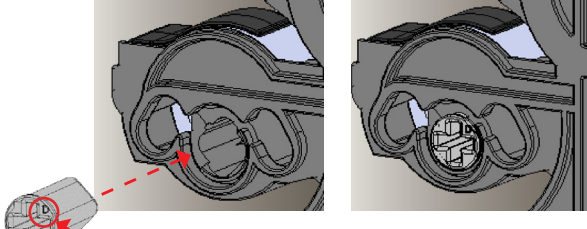


Select the adapter appropriate for the lock brand and type being used.

Deadbolt adapters are marked "D", "E", "F", "G", and "H". Remove adapter from the adapter ring.

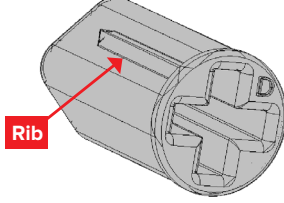
NOTE: If you are replacing an existing handle set, start by removing the existing hardware. If PanoLock is already installed, the appropriate adapter may already be present in the lock.

STEP 2

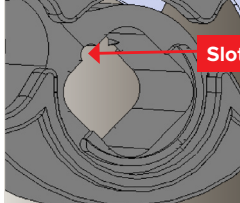


Insert with ID letter on this side.

Insert adapter into top (deadbolt drive) opening.



Rib



Slot

Align rib on adapter with slot in drive opening. Press in until fully seated.

STEP 3

Deadbolt Timing:

To ensure proper operation, time the deadbolt as follows: Partially insert key and rotate as necessary to ensure key and cylinder in upright position. Hold key securely in upright position during timing process.

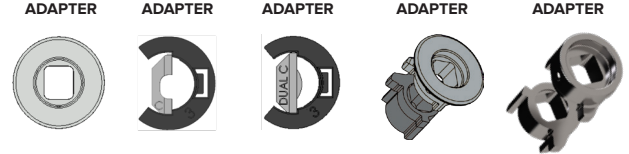
If lock is engaged/locked (upper and lower bolts fully extended), rotate the tailpiece of the exterior cylinder toward the edge of the door panel (locked position) until it stops.

If lock is disengaged/unlocked (upper and lower bolts retracted), rotate the tailpiece of the exterior cylinder toward the hinges (unlocked position) until it stops.

Assemble deadbolt supplied by deadbolt manufacturer.

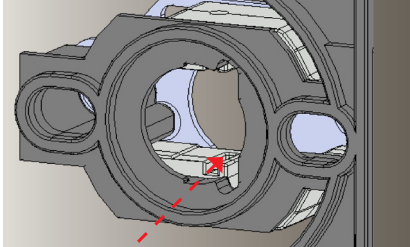
Handleset Assembly

STEP 1: CHOOSE YOUR HANDLESET ADAPTER



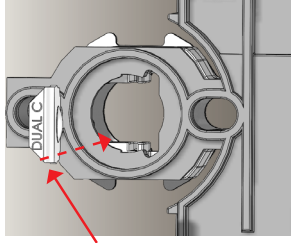
Adapter types are Square Drive, C + Guide, Dual C + Guide, Split-Square and Split-Diamond

STEP 2: INSTALL APPROPRIATE ADAPTER.



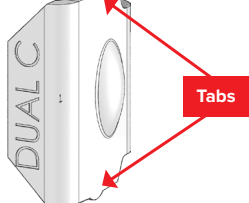
Insert appropriate adapter into bottom (handleset drive) opening.

STEP 3 : DUAL C + GUIDE ADAPTER ASSEMBLY

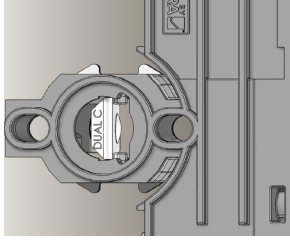


Insert with "DUAL C" on this side and bump on the right side.

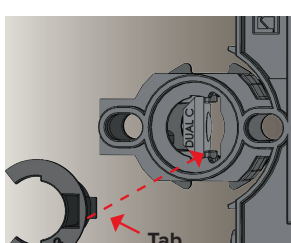
Do not snap into position.



Tabs



Inner Slots

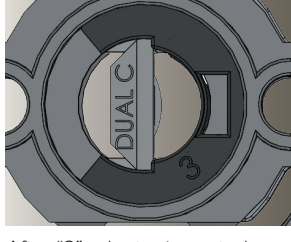


Insert with opening on the left side.

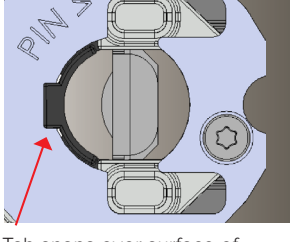
Align tabs on adapter with inner slots in drive opening.

Proper Orientation – Composite Side

Proper Orientation – Metal Side



After "3" adapter is seated, push "C" adapter with finger to snap into position.



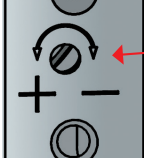
Tab snaps over surface of back face.

STEP 4

Assemble exterior and interior handle set to door with screws supplied by handle set manufacturer.

NOTE: With some thumbpress handle sets it may be necessary to adjust the lock internal spring mechanism to reduce the force needed to depress the thumbpress paddle, or to remove sag in the paddle.

STEP 5

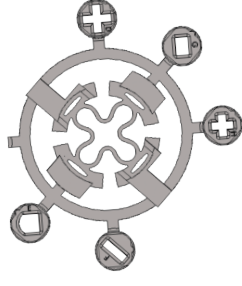


Use a flat head screwdriver to turn adjustment screw as needed to reduce force or remove thumb paddle sag.

Deadbolt Assembly

Including Split-Square and Split-Diamond Handleset Adapter Assembly

STEP 1

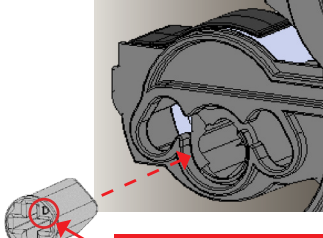


Select the adapter appropriate for the lock brand and type being used.

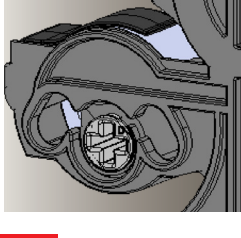
Deadbolt adapters are marked “D”, “E”, “F”, “G”, and “H”. Remove adapter from the adapter ring.

NOTE: If you are replacing an existing handle set, start by removing the existing hardware. If PanoLock is already installed, the appropriate adapter may already be present in the lock.

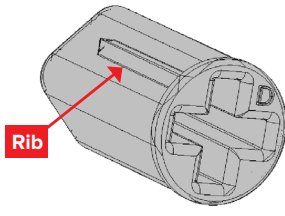
STEP 2



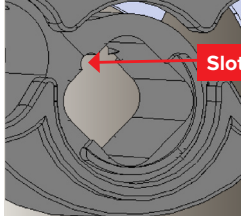
Insert with ID letter on this side.



Insert adapter into top (deadbolt drive) opening.



Rib



Slot

Align rib on adapter with slot in drive opening. Press in until fully seated.

STEP 3

Deadbolt Timing:

To ensure proper operation, time the deadbolt as follows: Partially insert key and rotate as necessary to ensure key and cylinder in upright position. Hold key securely in upright position during timing process.

If lock is engaged/locked (upper and lower bolts fully extended), rotate the tailpiece of the exterior cylinder toward the edge of the door panel (locked position) until it stops.

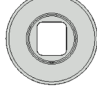
If lock is disengaged/unlocked (upper and lower bolts retracted), rotate the tailpiece of the exterior cylinder toward the hinges (unlocked position) until it stops.

Assemble deadbolt supplied by deadbolt manufacturer.

Handleset Assembly

STEP 1: CHOOSE YOUR HANDLESET ADAPTER

SQUARE DRIVE ADAPTER



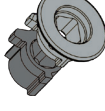
C + GUIDE ADAPTER



DUAL C + GUIDE ADAPTER



SPLIT SQUARE ADAPTER

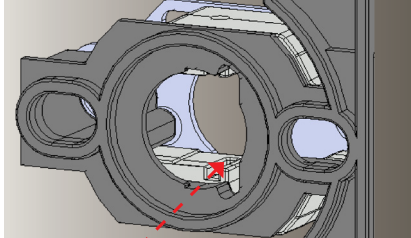


SPLIT DIAMOND ADAPTER



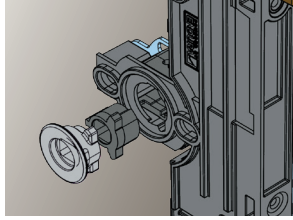
Adapter types are Square Drive, C + Guide, Dual C + Guide, Split-Square and Split-Diamond

STEP 2: INSTALL APPROPRIATE ADAPTER.

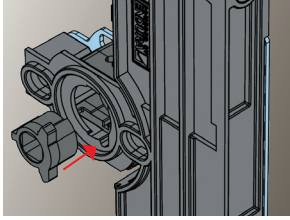


Insert appropriate adapter into bottom (handleset drive) opening.

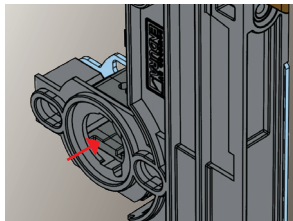
STEP 3 : SPLIT SQUARE & SPLIT DIAMOND ADAPTER ASSEMBLY*



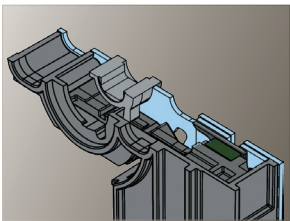
The Split-Square Adapter is a 2-piece design with the order of assembly shown below. Installation is completed on the composite side of the lock.



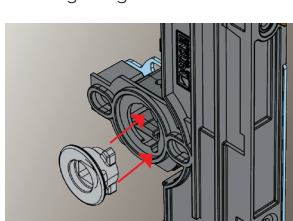
Begin by Installing the smaller of the two pieces first, with the “ears” aligned with the cut outs in the lock case.



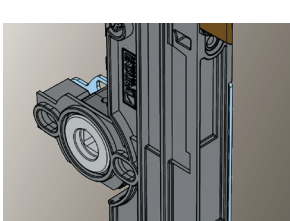
Push the first part of the adapter fully into the lock case. Final position is indicated in the section drawing at right.



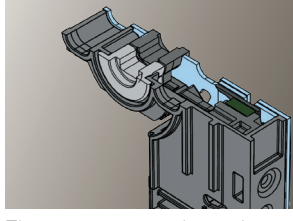
This cutaway view shows the final position for the adapter, protruding from the metal side of the lock case.



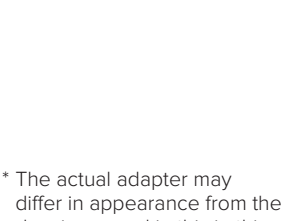
Install the larger of the two pieces with the “ears” aligned with the cut outs in the case.



Firmly press the adapter in place until a “click” is heard/felt to ensure the adapter is fully installed.



The cutaway view shows the final position of both adapters.



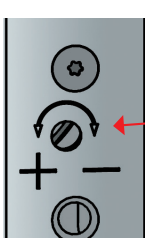
* The actual adapter may differ in appearance from the drawings used in this in this instruction sheet.

STEP 4

Assemble exterior and interior handle set to door with screws supplied by handle set manufacturer.

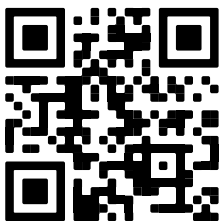
NOTE: With some thumbpress handle sets it may be necessary to adjust the lock internal spring mechanism to reduce the force needed to depress the thumbpress paddle, or to remove sag in the paddle.

STEP 5



Use a flat head screwdriver to turn adjustment screw as needed to reduce force or remove thumb paddle sag.

Please scan the code or click the link to verify that your preferred locksets have been tested for compatibility with PanoLock+ and to confirm which adapter fits your lockset.



<https://www.enduraproducts.com/panolock-plus-compatibility/>

Don't see the information you need?

Please contact Endura Products by calling (800) 334-2006 and we'll be glad to help.



PANOLOCK[®]+
MULTI-POINT LOCK

