



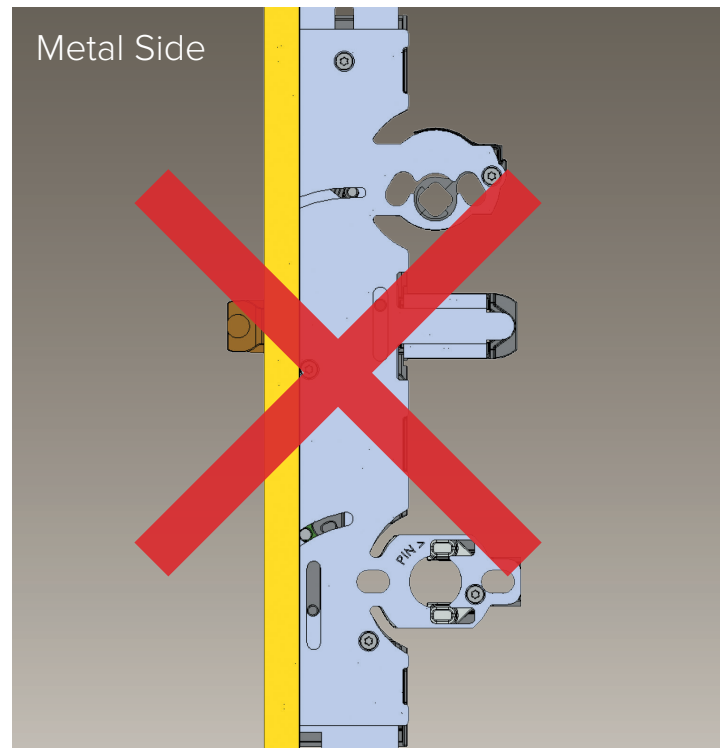
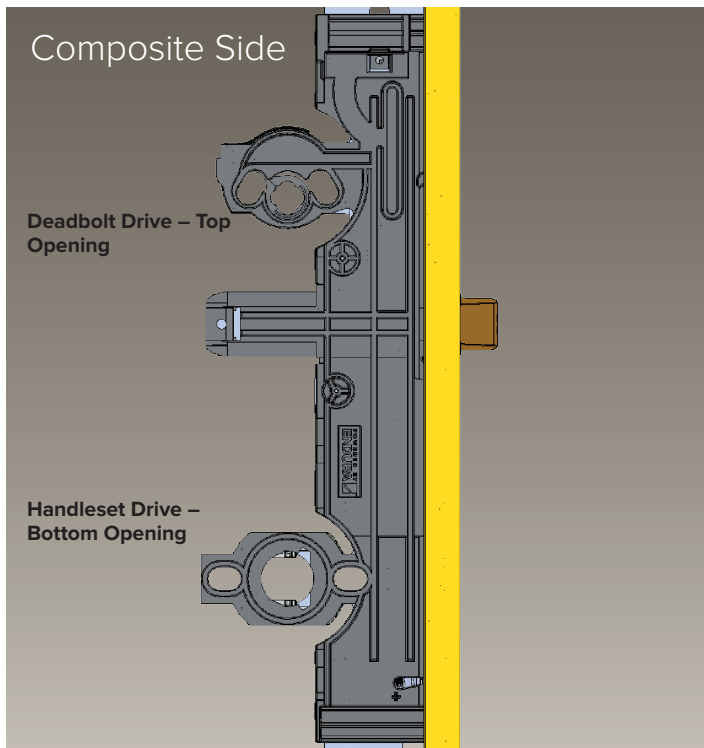
PANOLOCK®
MULTI-POINT LOCK



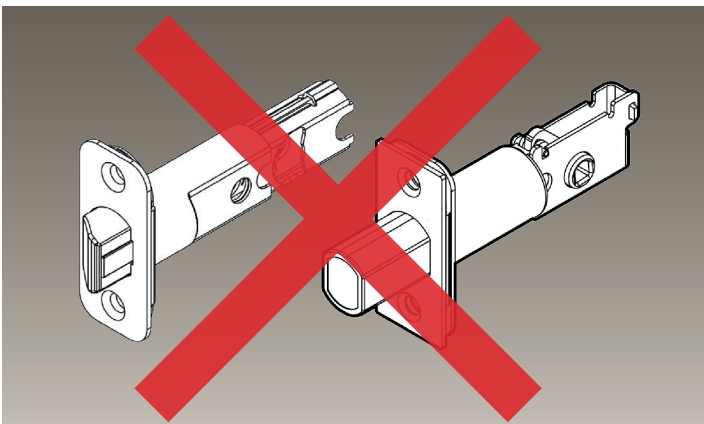
DOOR COMPONENTS MADE IN THE USA

Handle Set Assembly Instructions

Adapters for the deadbolt and handle set are inserted from the composite side of the lock-set, and not the metal side. The composite side can be facing the exterior or interior, depending upon door handing.

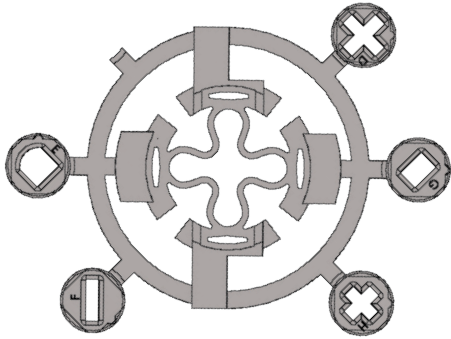


The handleset and deadbolt assemblies supplied with the hardware are NOT used with PanoLock.



Deadbolt Assembly

Step 1



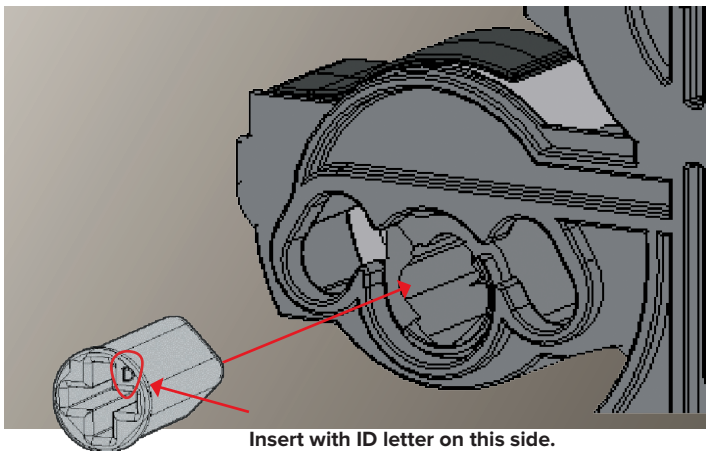
Select the adapter appropriate for the lock brand and type being used.

Deadbolt adapters are marked “D”, “E”, “F”, “G”, and “H”. Remove adapter from adapter ring.

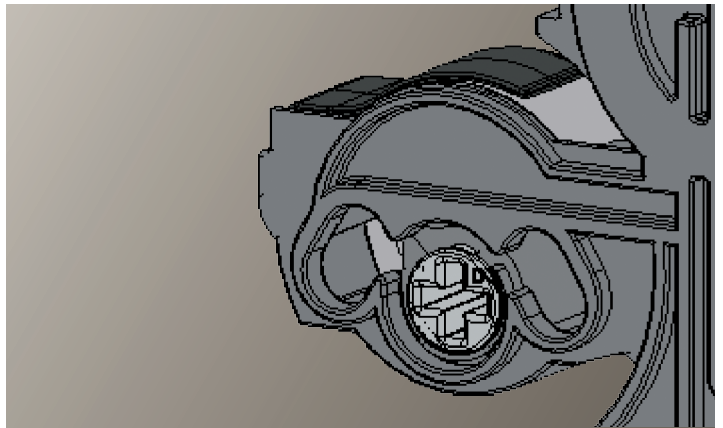
NOTE: If you are replacing an existing handle set, start by removing the existing hardware. If PanoLock is already installed, the appropriate adapter may already be present in the lock.

Step 2

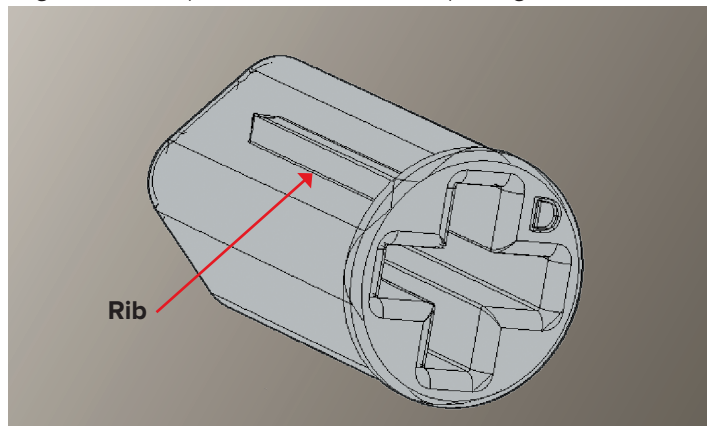
Insert adapter into top (deadbolt drive) opening.



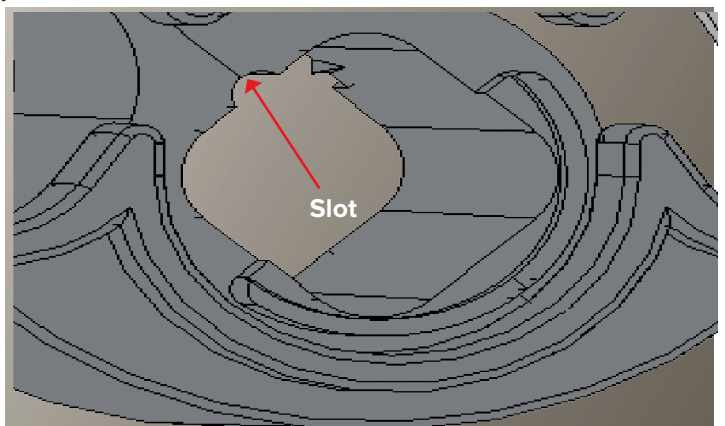
Insert with ID letter on this side.



Align rib on adapter with slot in drive opening. Press in until fully seated.



Rib



Slot

Step 3

Deadbolt Timing:

To ensure proper operation, time the deadbolt as follows:

Partially insert key and rotate as necessary to ensure key and cylinder in upright position. Hold key securely in upright position during timing process.

- If lock is engaged/locked (upper and lower bolts fully extended), rotate the tailpiece of the exterior cylinder toward the edge of the door panel (locked position) until it stops.

- If lock is disengaged/unlocked (upper and lower bolts retracted), rotate the tailpiece of the exterior cylinder toward the hinges (unlocked position) until it stops

Assemble deadbolt supplied by deadbolt manufacturer.

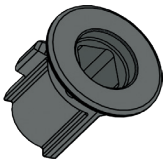
Handleset Assembly

Step 1

Select adapter appropriate for the lock brand and type being used.

Adapter types are "Square Drive, C + Guide, Dual C + Guide, Split-Square and Split-Diamond

Square Drive Adapter



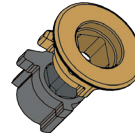
C + Guide Adapter



Dual C + Guide Adapter



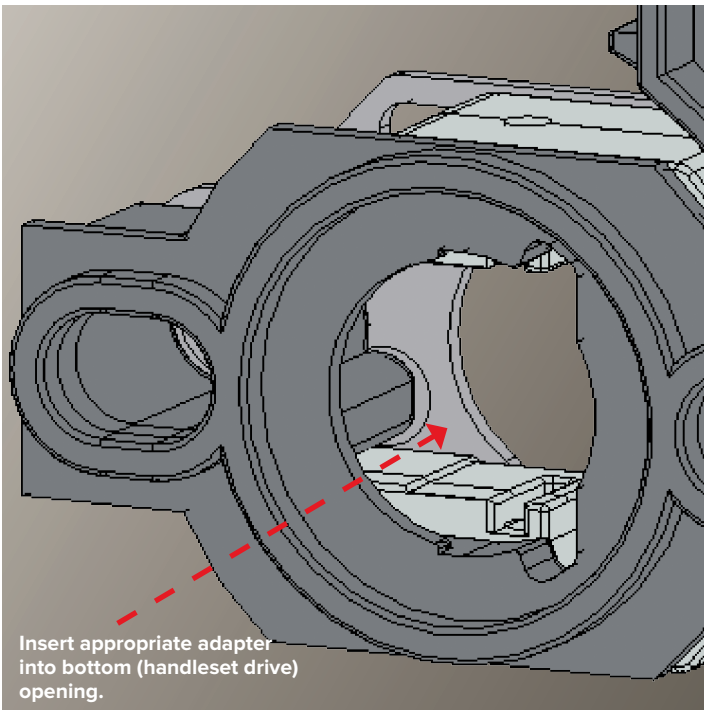
Split-Square Adapter



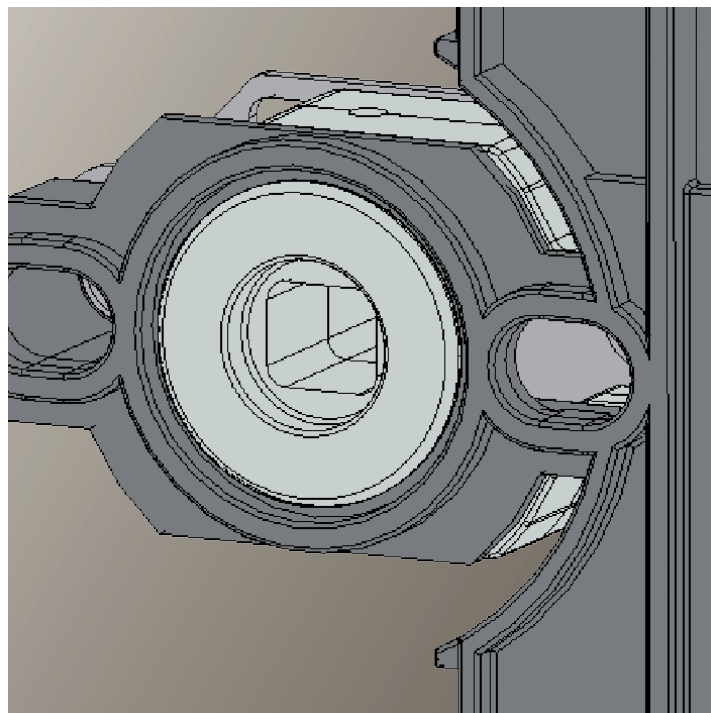
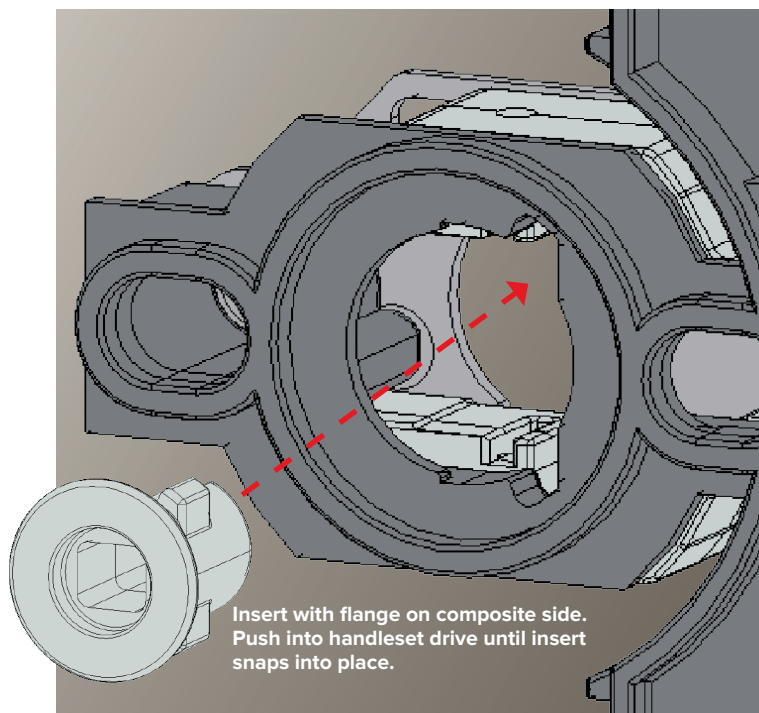
Split-Diamond Adapter



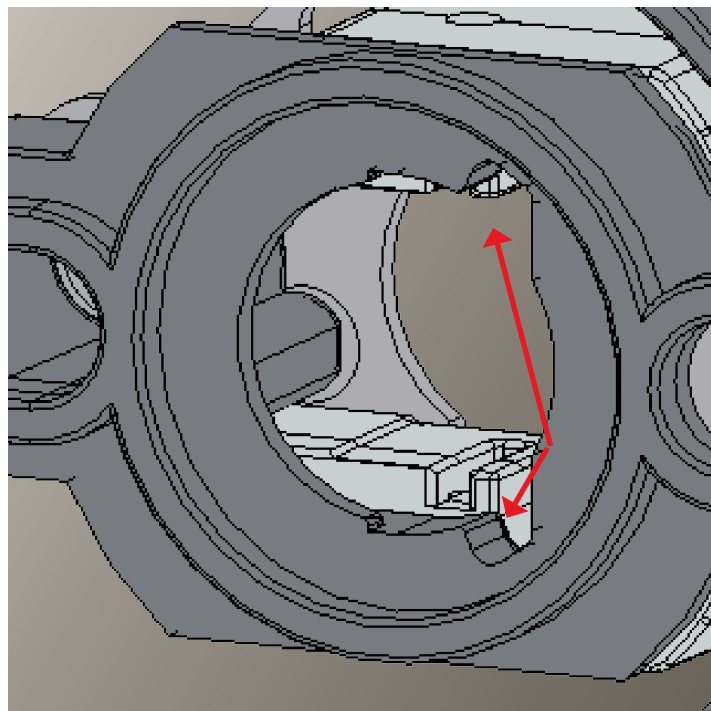
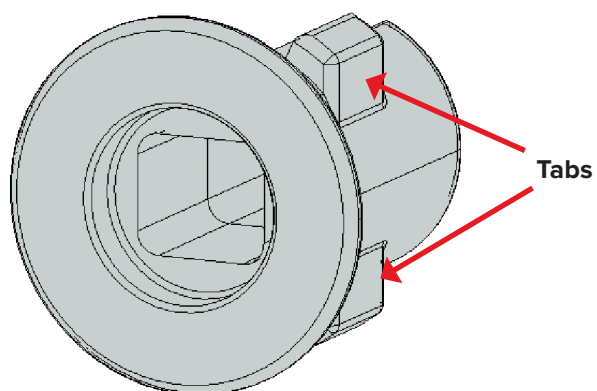
Step 2 Install appropriate adapter.



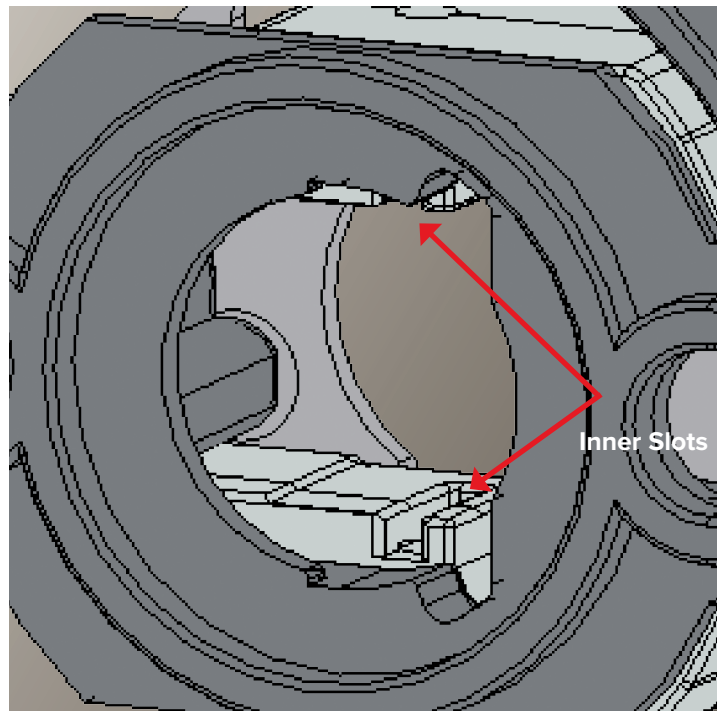
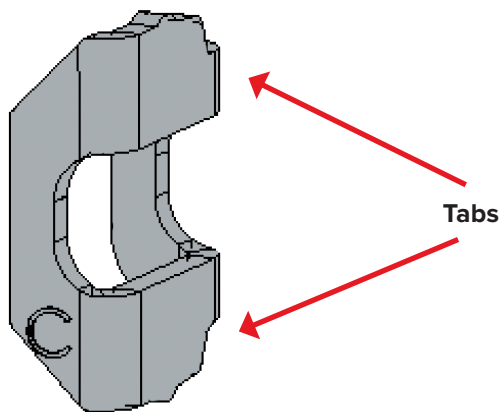
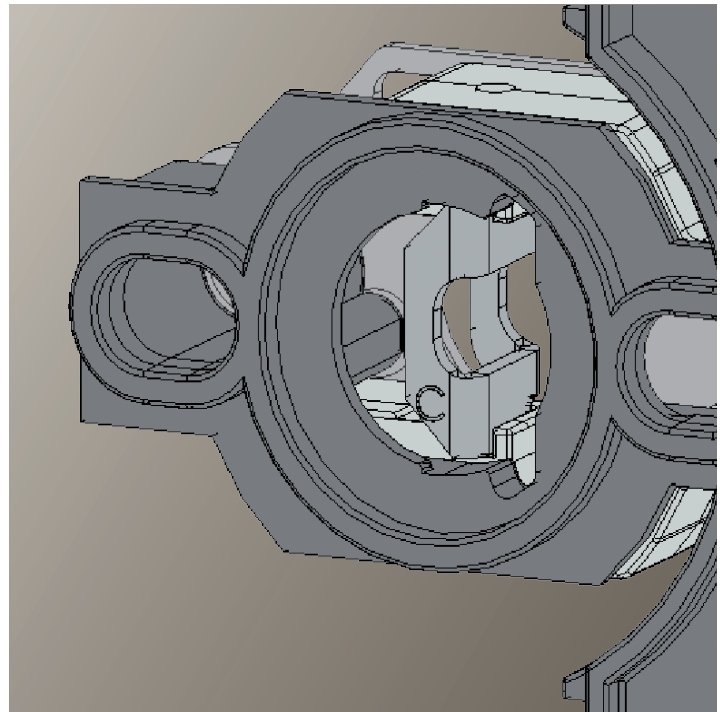
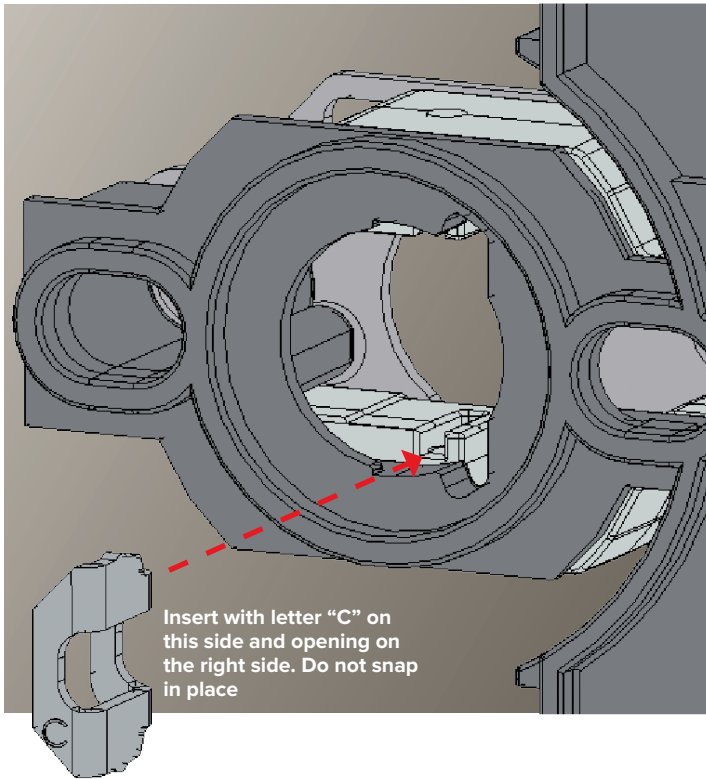
Square Drive Adapter Assembly



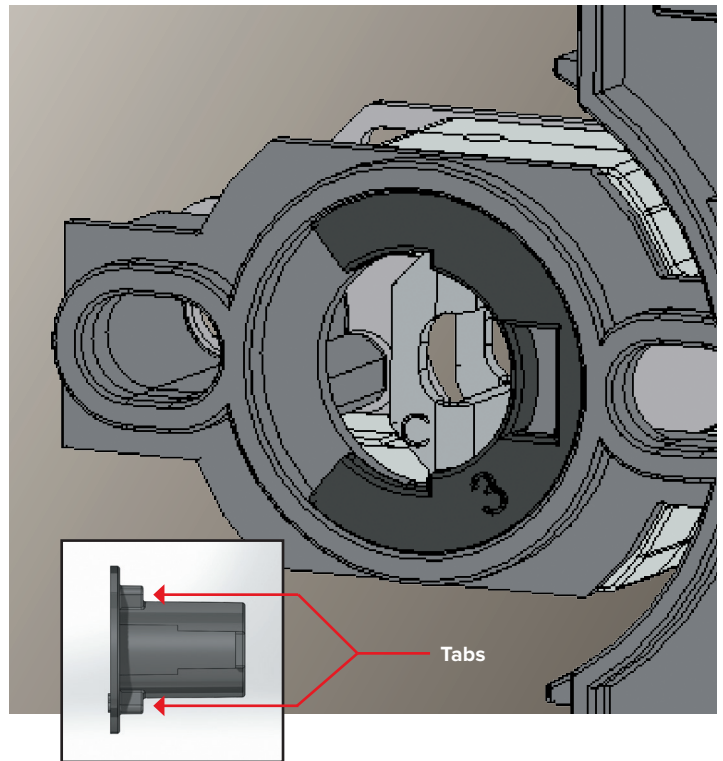
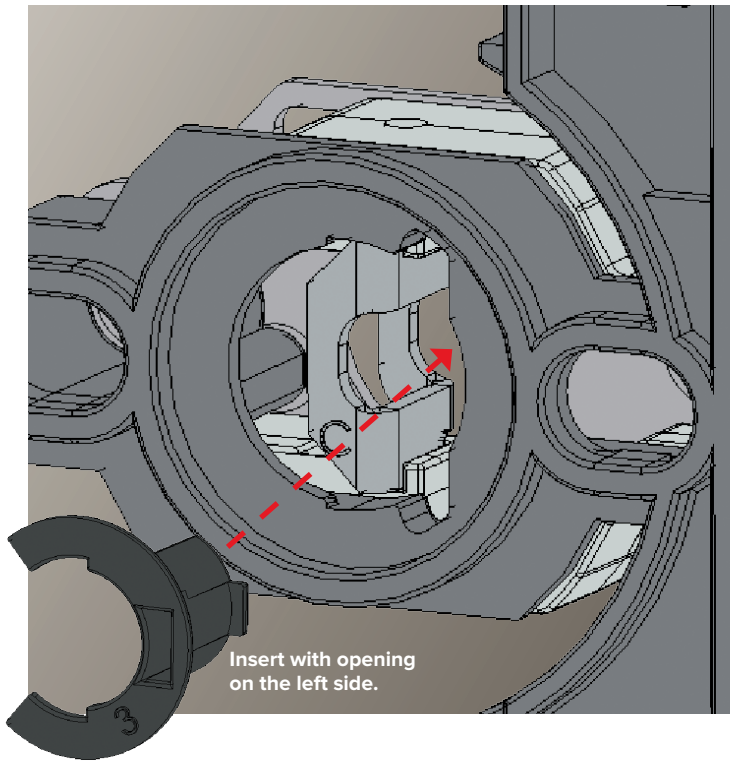
Align tabs on adapter with outer slots in the drive opening.



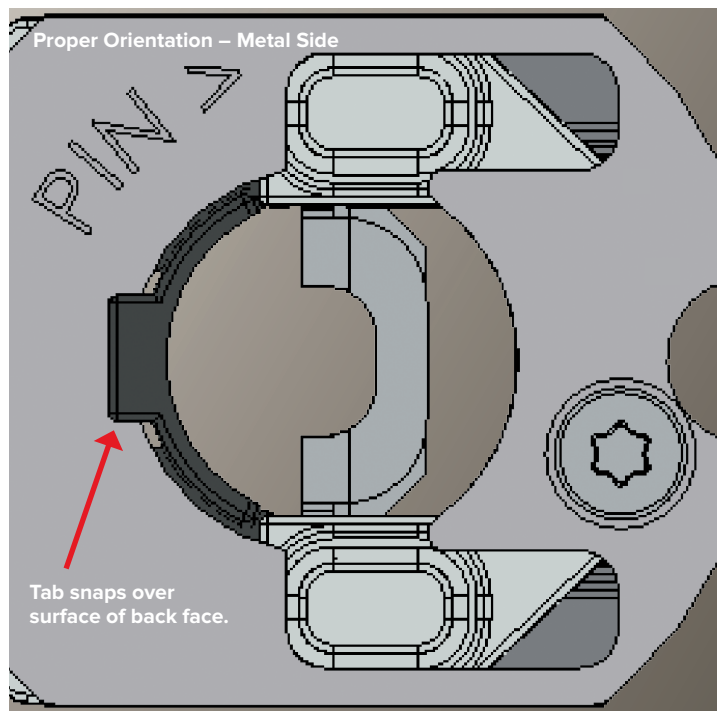
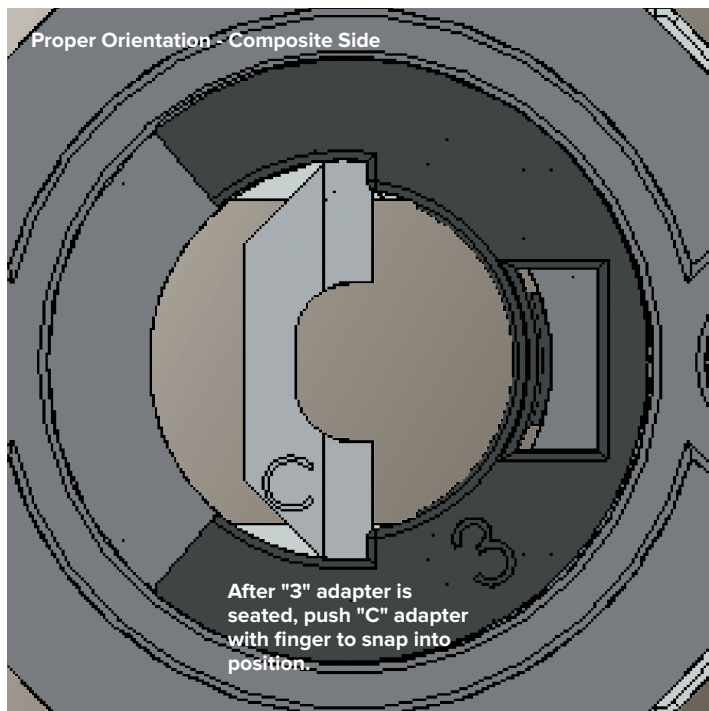
C + Guide Adapter Assembly



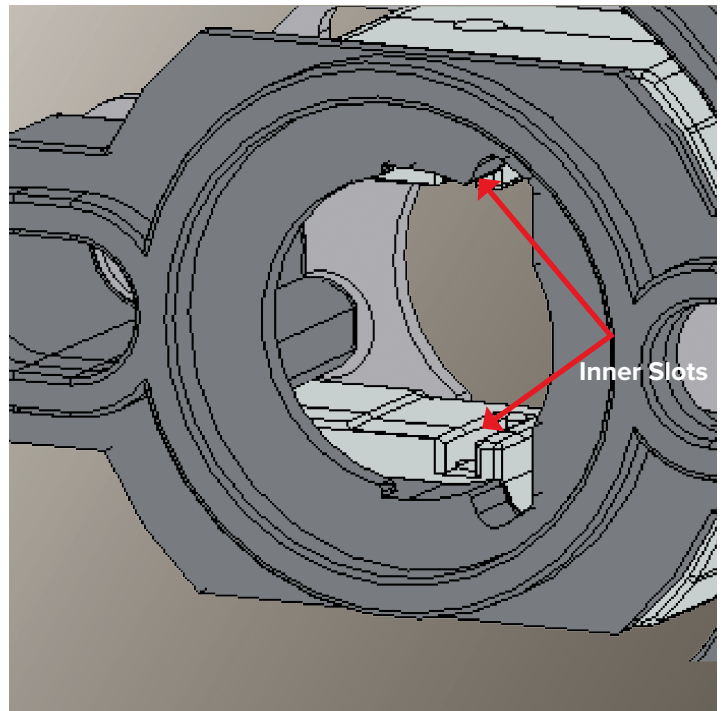
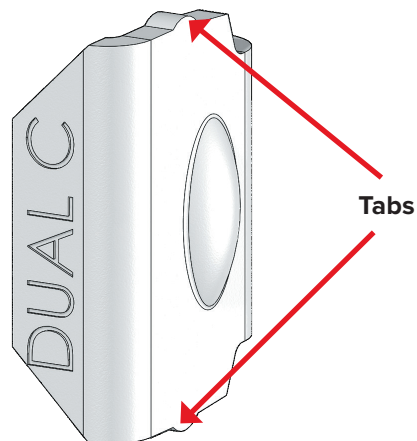
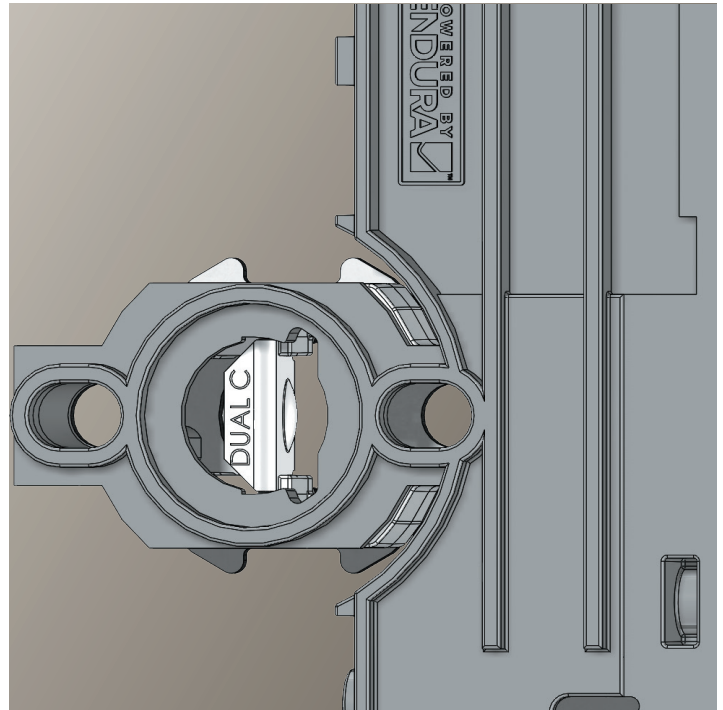
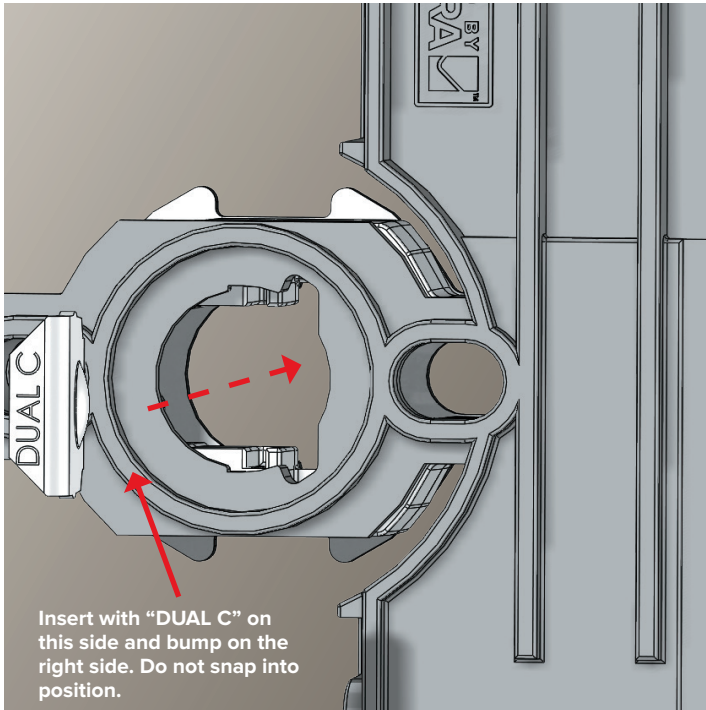
C + Guide Adapter Assembly (CTD.)



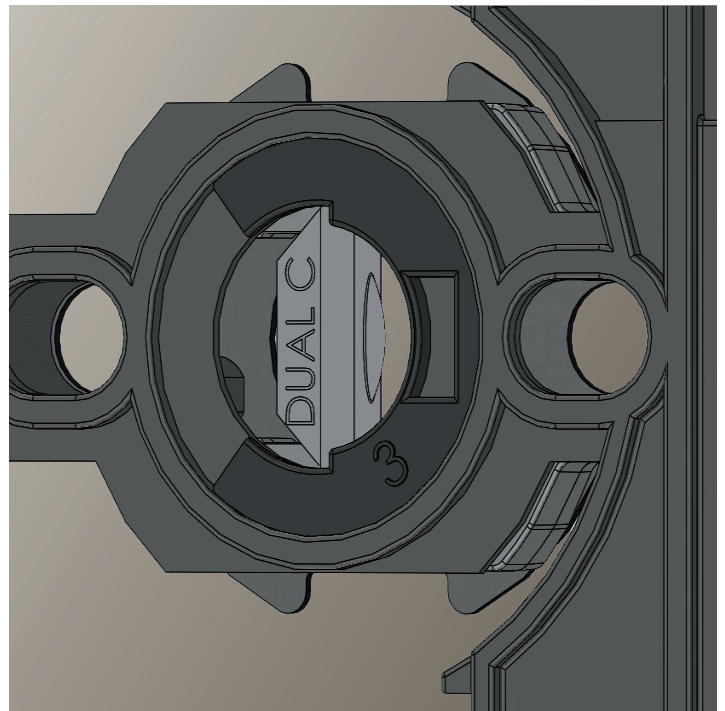
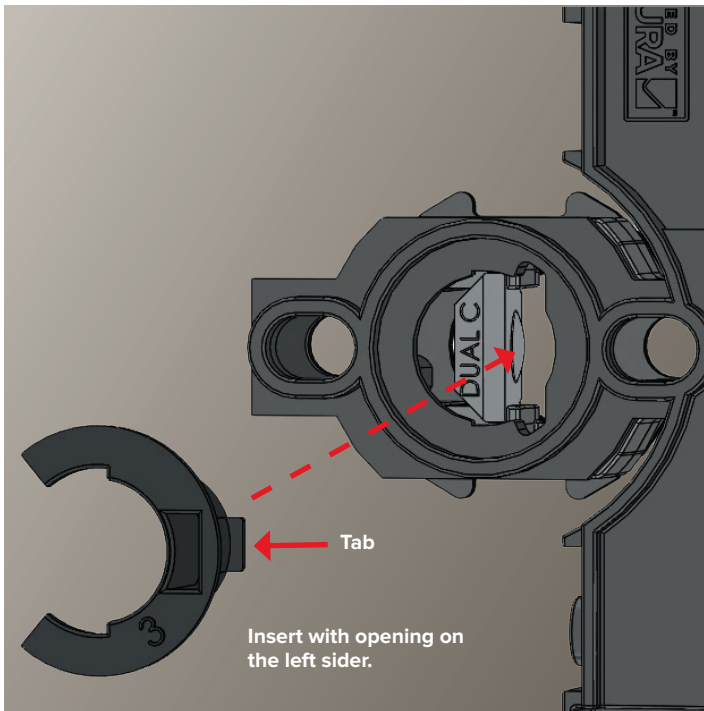
Align tabs on adapter with inner slots in drive opening.



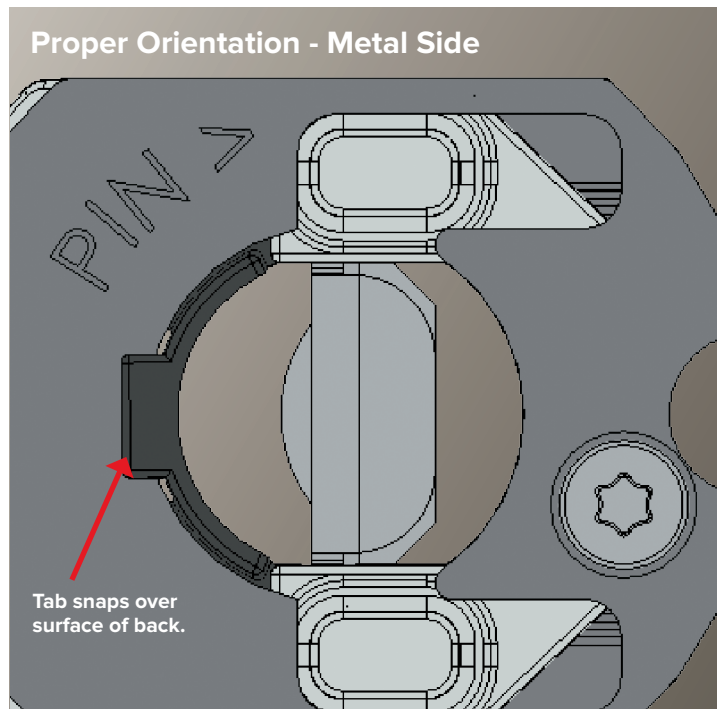
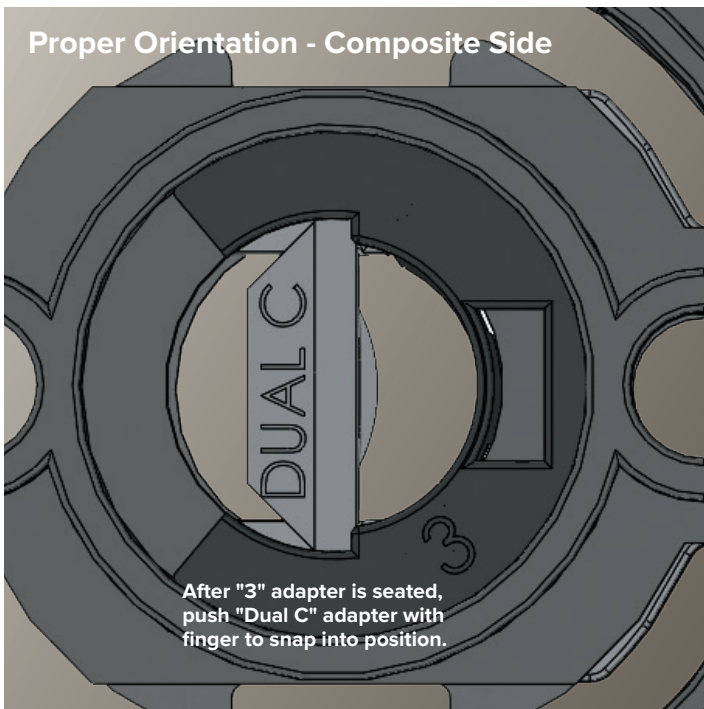
Dual C + Guide Adapter Assembly



Dual C + Guide Adapter Assembly (CTD.)



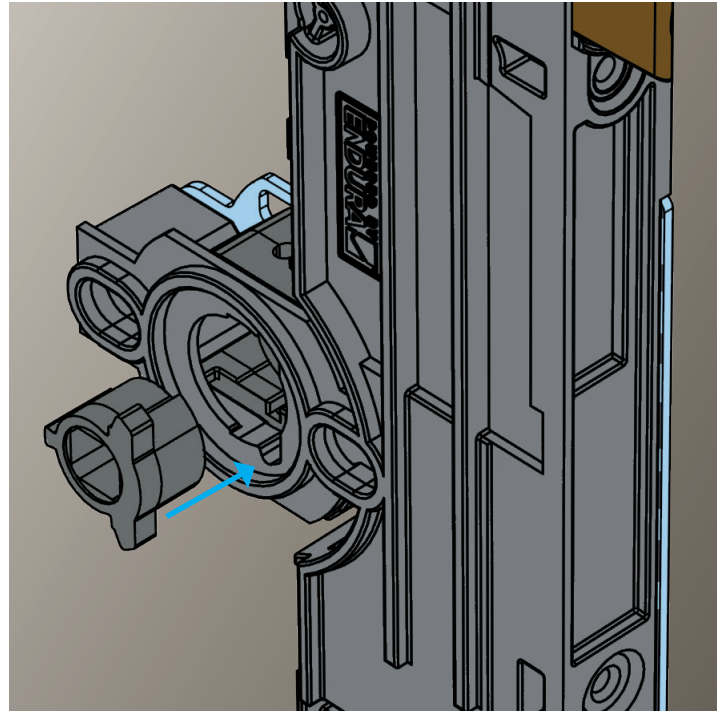
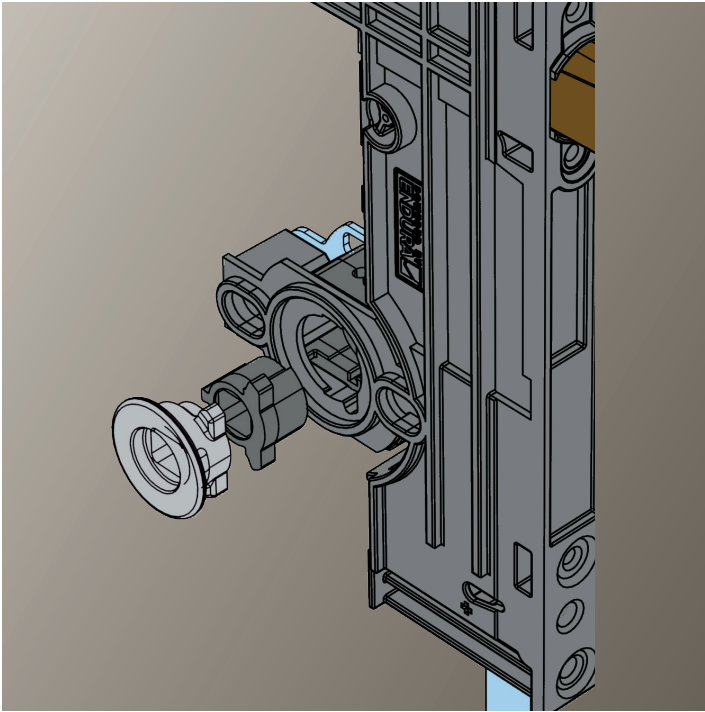
Align tabs on adapter with inner slots in drive opening.



Split-Square and Split Diamond Adapter Assembly

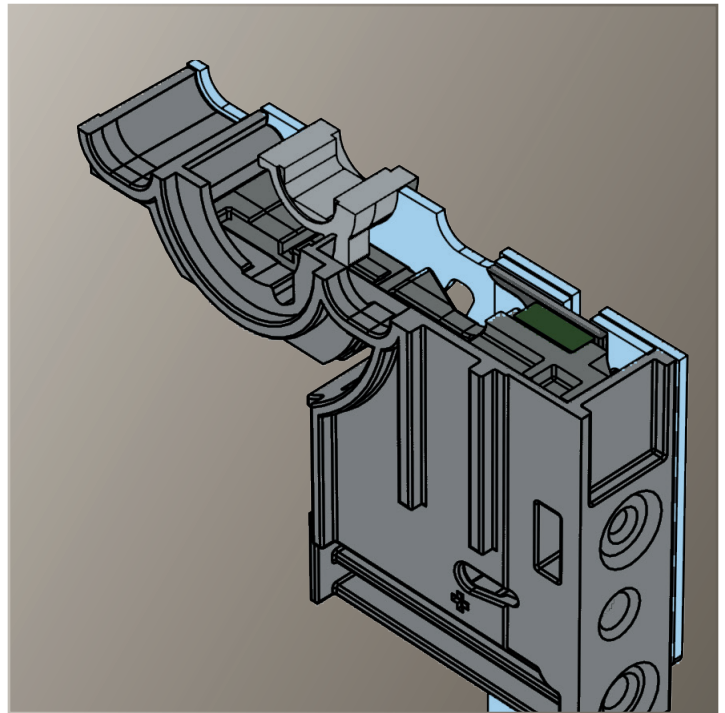
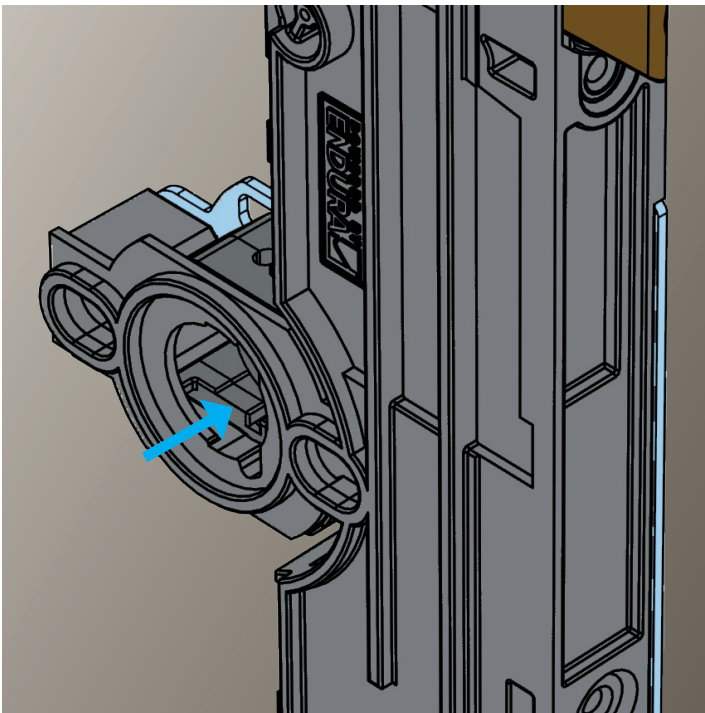
The Split-Square Adapter is a 2-piece design with the order of assembly shown below. Installation is completed on the composite side of the lock.

Begin by installing the smaller of the two pieces first, with the “ears” aligned with the cut outs in the lock case.



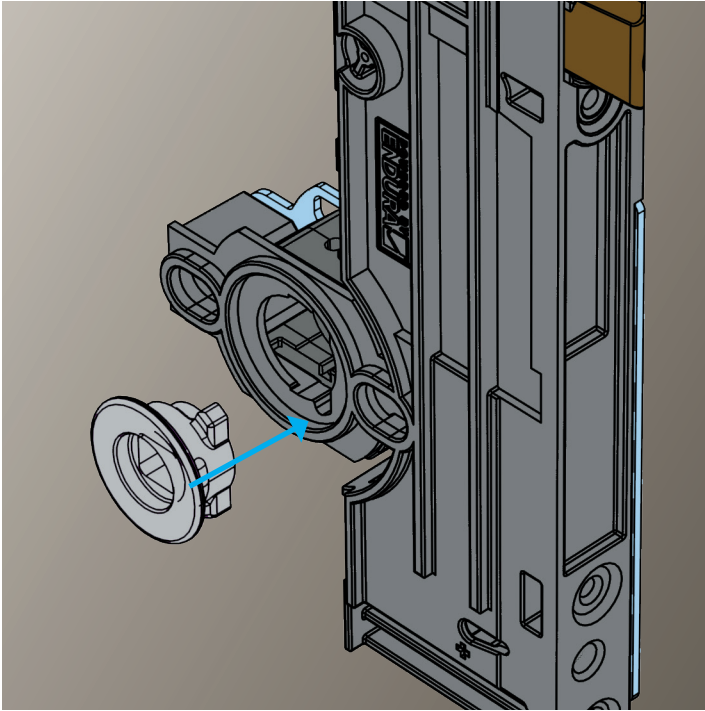
Push the first part of the adapter fully into the lock case. Final position is indicated in the section drawing at right.

This cutaway view shows the final position for the adapter, protruding from the metal side of the lock case.

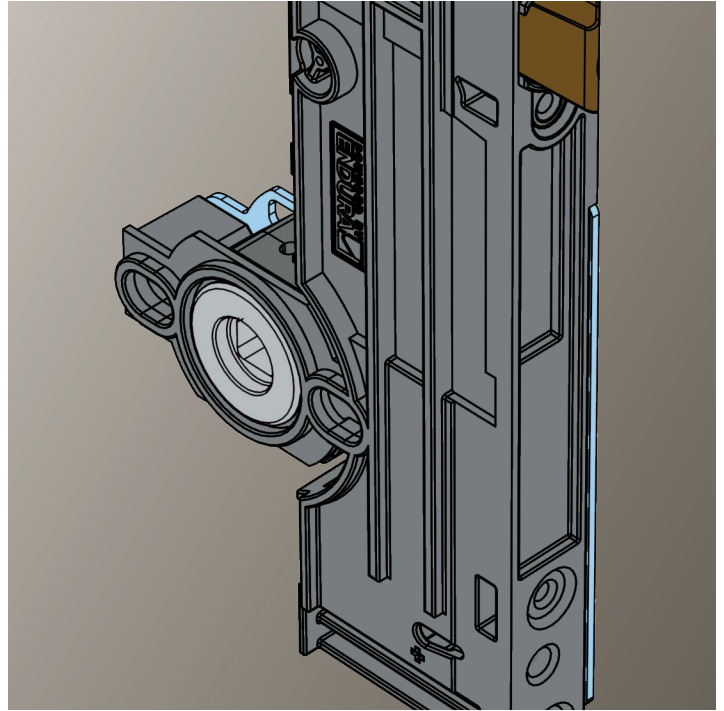


Split-Square and Split Diamond Adapter Assembly (CTD.)

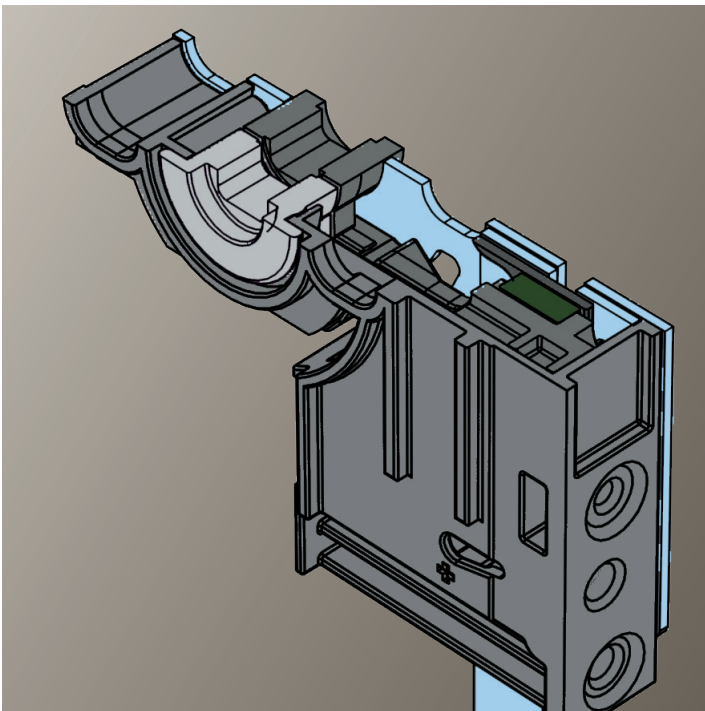
Install the larger of the two pieces with the “ears” aligned with the cut outs in the case.



Firmly press the adapter in place until a “click” is heard/felt. This ensures the adapter is fully installed.



The cutaway view below shows the final position of both adapters.

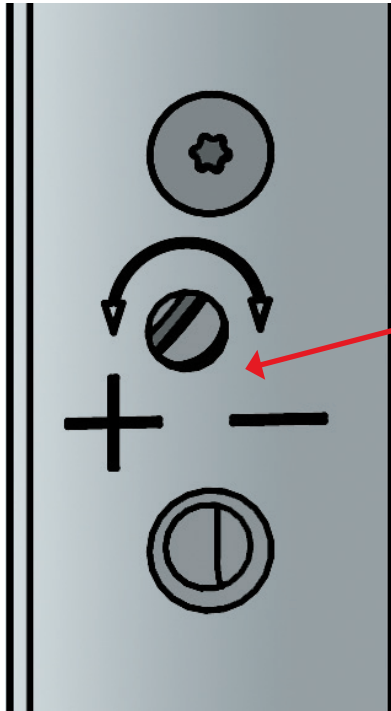


Lockset Assembly

Step 4

Assemble exterior and interior handle set to door with screws supplied by handleset manufacturer.

Step 5



Use a flat head screwdriver to turn adjustment screw as needed to reduce force or remove thumb paddle sag.

With some thumbpress handle sets it may be necessary to adjust the lock internal spring mechanism to reduce the force needed to depress the thumbpress paddle, or to remove sag in the paddle.

INNOVATION POWERED BY ENDURA.

Endura is built on innovation and a commitment to performance. Our products are problem solvers, born directly from insight we've learned from our customers about real-world challenges. We're always pushing ourselves to face an ever-present challenge: How can we make your door system work better?

Innovation protected under patents and patents pending in U.S. and Canada.
See www.endurapatents.com.

Form # 2U-INSTR-HANDSET Effective 1.23 © Endura Products



8817 W. Market St., Colfax, NC 27235
1.800.334.2006 www.enduraproducts.com