

# PanoLock™ Multi-Point Lock Instructions

## Lock Assembly & Handing



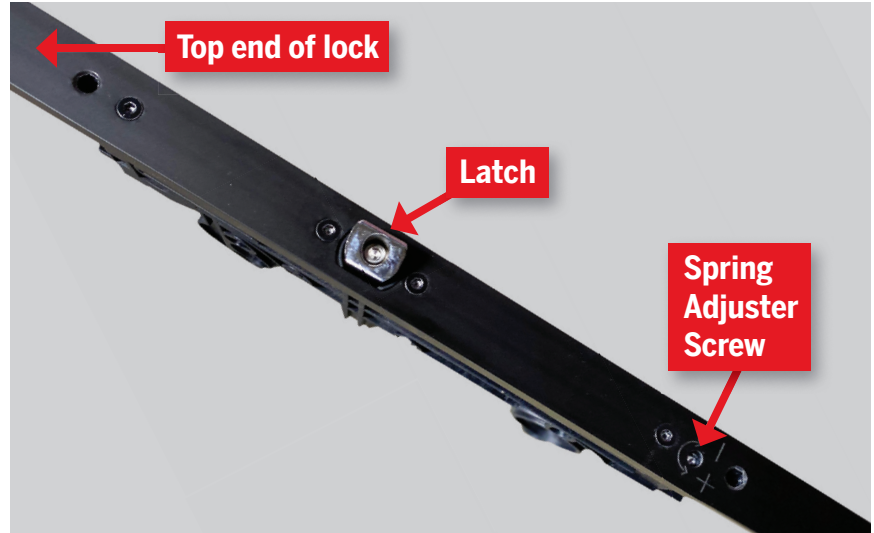
8817 West Market Street  
Colfax, NC 27235 | 800.334.2006  
www.enduraproducts.com

### STEP 1



Ensure lock mortise in panel edge is clear of dust and debris.

### STEP 2



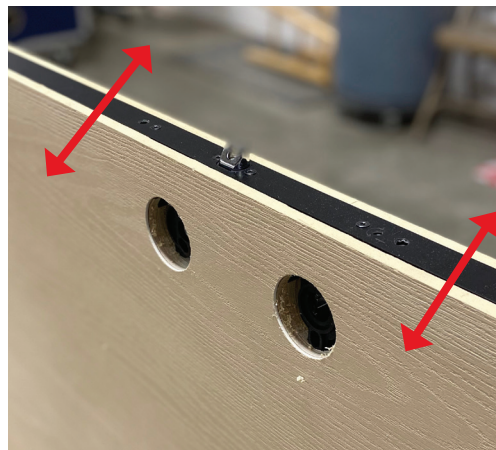
Orient lock assembly as shown.

### STEP 3



Place lock assembly in mortise pocket.

### STEP 4



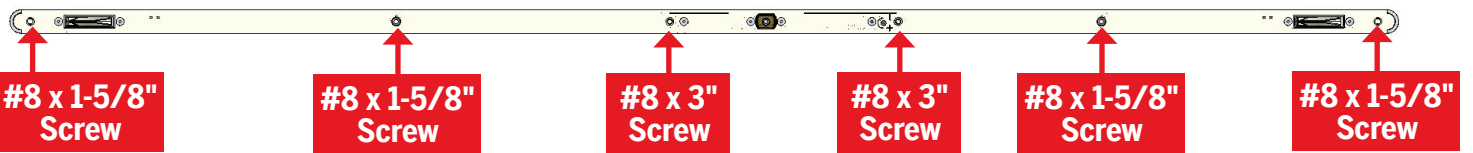
Check to confirm proper placement of the lock. Ensure entire length lock face plate is flush with edge face of panel. If lock does not sit flush, remove lock and check for debris in pocket. It may be necessary to verify mortise pocket dimensions if no debris or contamination is present.



Ensure lock drive hubs align with panel face bores

## STEP 5

Secure lock with installation screws. \*Note: 6/8 Panels will require (4) #8 x 1-5/8" screws; 8/0 panels will require (6) #8 x 1-5/8" screws.



**Two #8 x 3" Screws:** Place through open holes just above the latch, and just below the spring adjuster screw.



**Four #8 x 1-5/8" Screws:** Place through remaining open holes.

## STEP 6



Lock Handing - The angled surface of the latch faces the strike plate.

## STEP 7



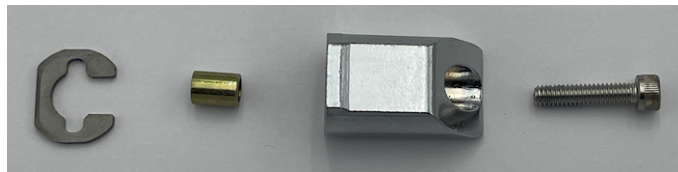
To rehand the lock, loosen the latch screw with a 9/64" allen wrench.



## STEP 8



Lift latch away from lock, rotate 180 degrees, place back into lock.



Note placement of roller sleeve, latch and screw.

## STEP 9



Tighten screw to secure latch in place.

## STEP 10

Check latch function by using Endura's construction handle.



Item# PL-CNSTRCTHNDL



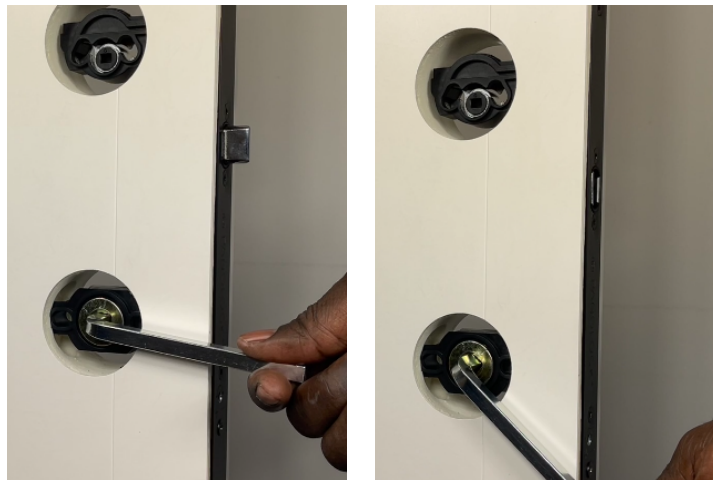
Insert construction handle into the deadbolt hole and rotate to extend and retract the upper and lower latches.

## STEP 11



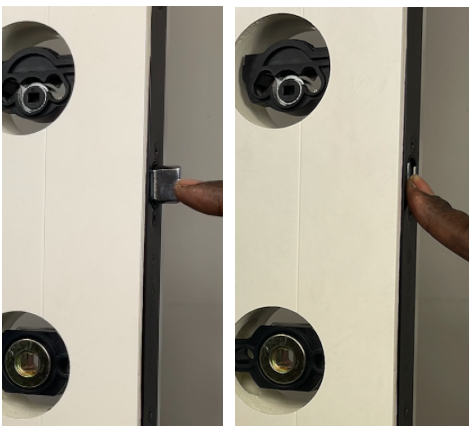
Leaving the upper and lower latches in the extended position, push down on the upper and lower latches. The latches should remain locked in position.

## STEP 12



Insert construction handle into the handle-set location to check operation of the center latch. The handle-set will only effect the center latch, not the upper and lower latches.

## STEP 13



The center latch should easily go into the door panel when pushed with finger, returning to normal position when finger is taken away from the latch.