

PanoLock™ Multi-Point Lock Instructions

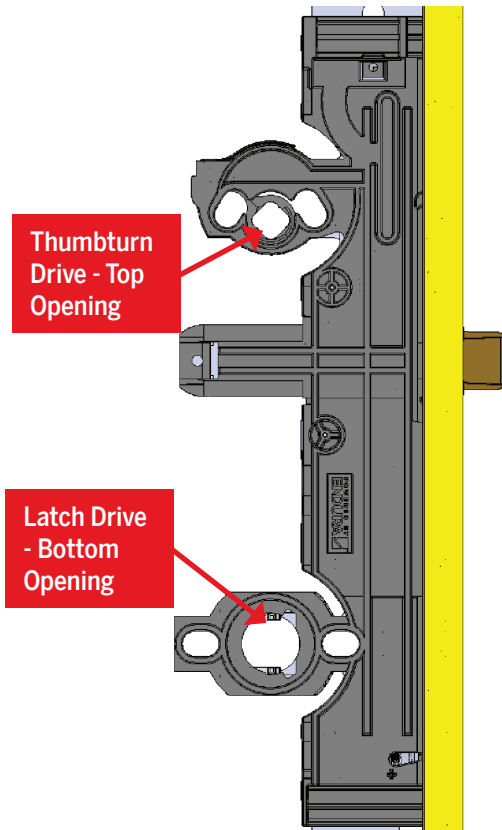
Handleset Assembly



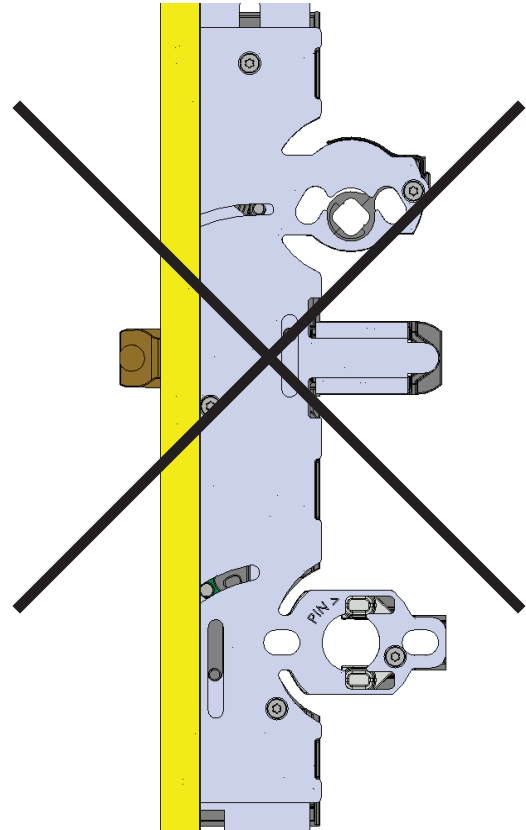
8817 West Market Street
Colfax, NC 27235 | 800.334.2006
www.enduraproducts.com

Adapters for the thumbturn and handle set are inserted from the composite side of the lock set, and not the metal side. The composite side can be facing the exterior or interior, depending upon door handing.

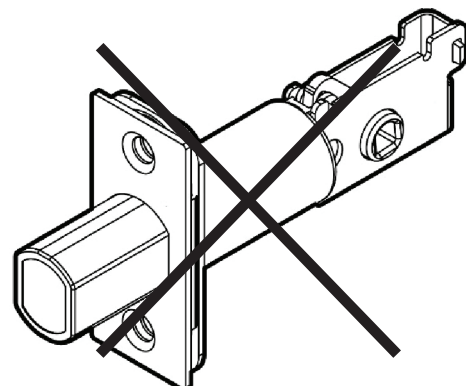
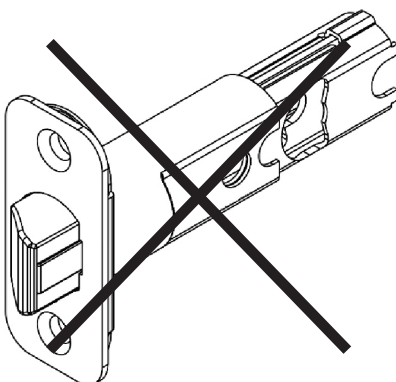
COMPOSITE SIDE






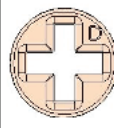
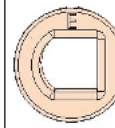
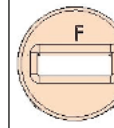
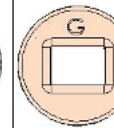
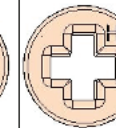
METAL SIDE



The latch and deadbolt assemblies supplied with the hardware are NOT used with PanoLock.



Please refer to the below guide when selecting adapters.

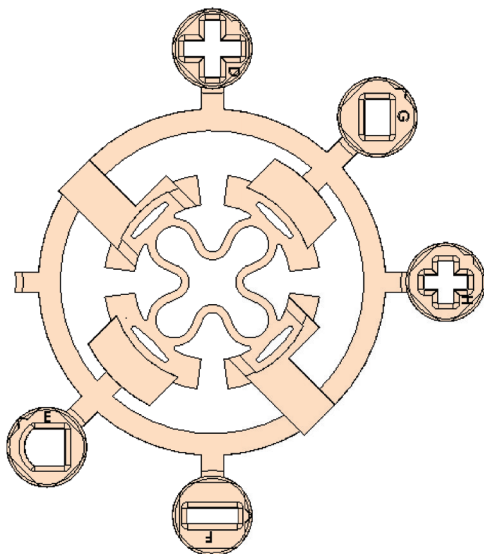
Hand Set		Handle Set Adaptor			Thumb Turn Adaptor				
		Square	C	Dual C+Guide	D	E	F	G	H
Brand	Style								
Schlage	Knob	x					x		
	Lever	x					x		
	Thumbpress	x					x		
Kwikset	Knob		x		x	x			
	Lever		x		x	x			
	Thumbpress			x	x	x			
Baldwin	Knob		x		x	x			
	Lever		x		x	x			
	Thumbpress			x	x	x			
Gatehouse (Lowe's House Brand)	Knob	x							x
	Lever	x							x
	Thumbpress								
Defiant (Home Depot House Brand)	Knob	x						x	
	Lever	x						x	
	Thumbpress	x						x	
Brinks (Walmart)	Knob	x			x				
	Lever	x			x				
	Thumbpress	x			x				
Masterlock	Knob	x							x
	Lever	x							x
	Thumbpress	x							x

Non-Compatible Hand Sets Include:
 Low Profile - Baldwin and Kwikset
 Gatehouse Thumbpress
 Brinks Push-Pull-Rotate
 Electronic Deadbolts

Don't see the information you need? Contact Endura Products directly by calling at (800) 334-2006 and we will assist you directly.

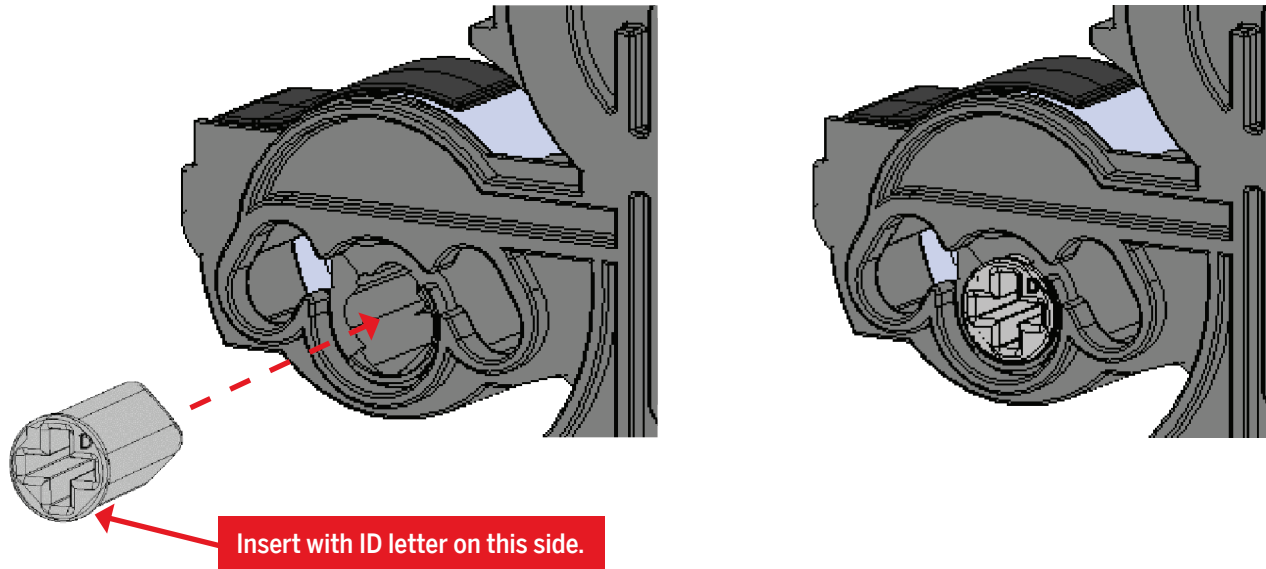
THUMBTURN ASSEMBLY

STEP 1

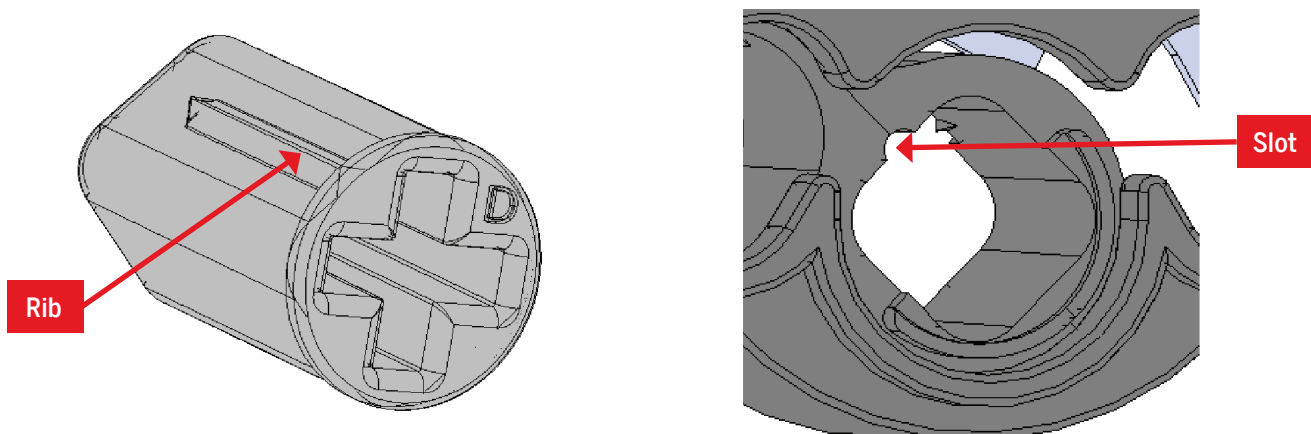


Select adapter appropriate for the lock brand and type being used. Adapters are marked "D", "E", "F", "G", and "H". Remove adapter from adapter ring.

STEP 2



Insert adapter into top (thumb turn drive) opening.



Align rib on adapter with slot in drive opening. Press in until fully seated.

STEP 3

Deadbolt Timing:

To ensure proper operation, time the deadbolt using the below guide:

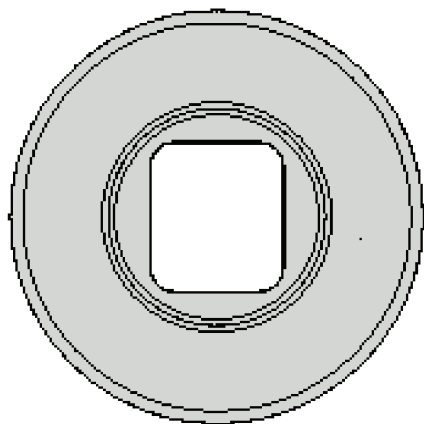
- Insert key and rotate as necessary to ensure key and cylinder in upright position. Hold key securely in upright position during timing process.
- If lock is engaged/locked (upper and lower bolts fully extended), rotate the tailpiece of the exterior cylinder toward the edge of the door panel (locked position) until it stops.
- If lock is disengaged/unlocked (upper and lower bolts retracted), rotate the tailpiece of the exterior cylinder toward the hinges (unlocked position) until it stops.

Assemble deadbolt exterior, keyed housing and interior thumbturn to door with screws supplied by deadbolt manufacturer.

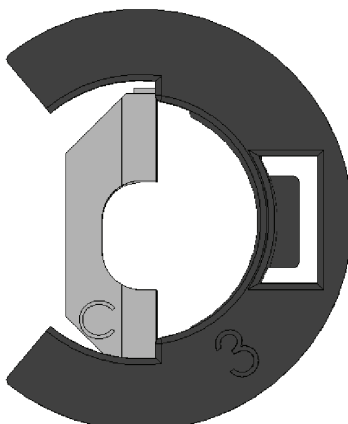
HANDLESET ASSEMBLY

STEP 1

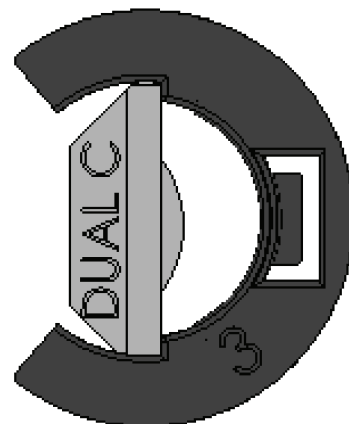
"SQUARE DRIVE" ADAPTER



"C + GUIDE" ADAPTER

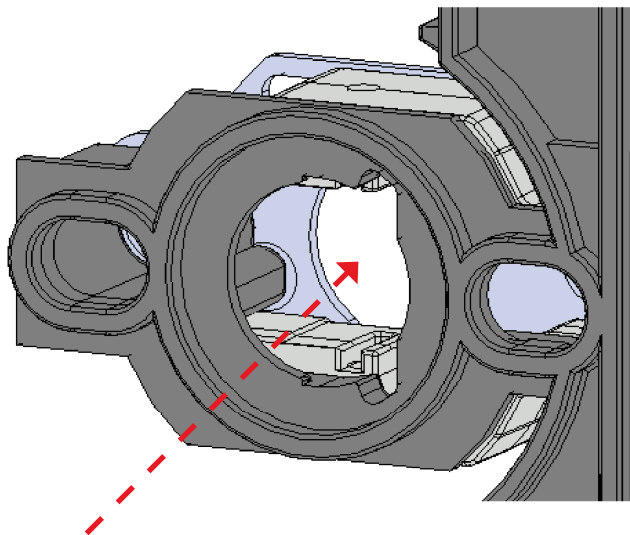


"DUAL C + GUIDE" ADAPTER



Select adapter appropriate for the lock brand and type being used. Adapter types are "Square Drive", "C + Guide", and "Dual C + Guide".

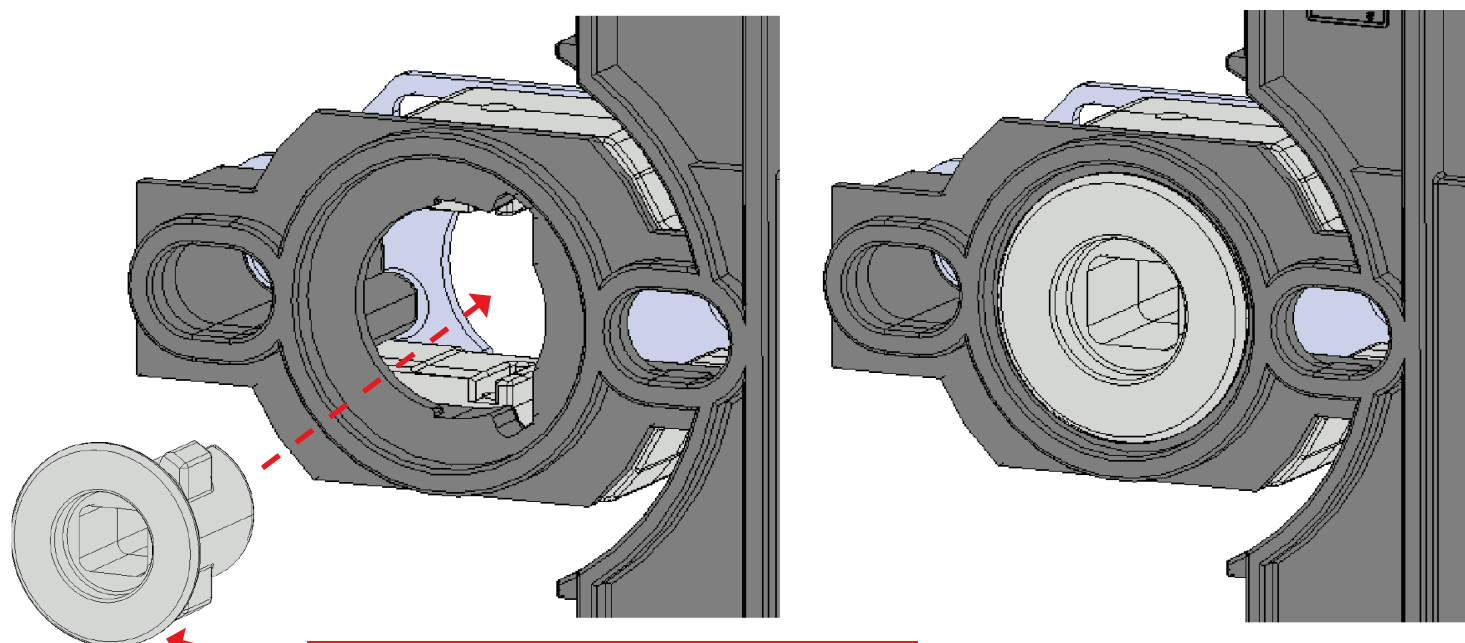
STEP 2



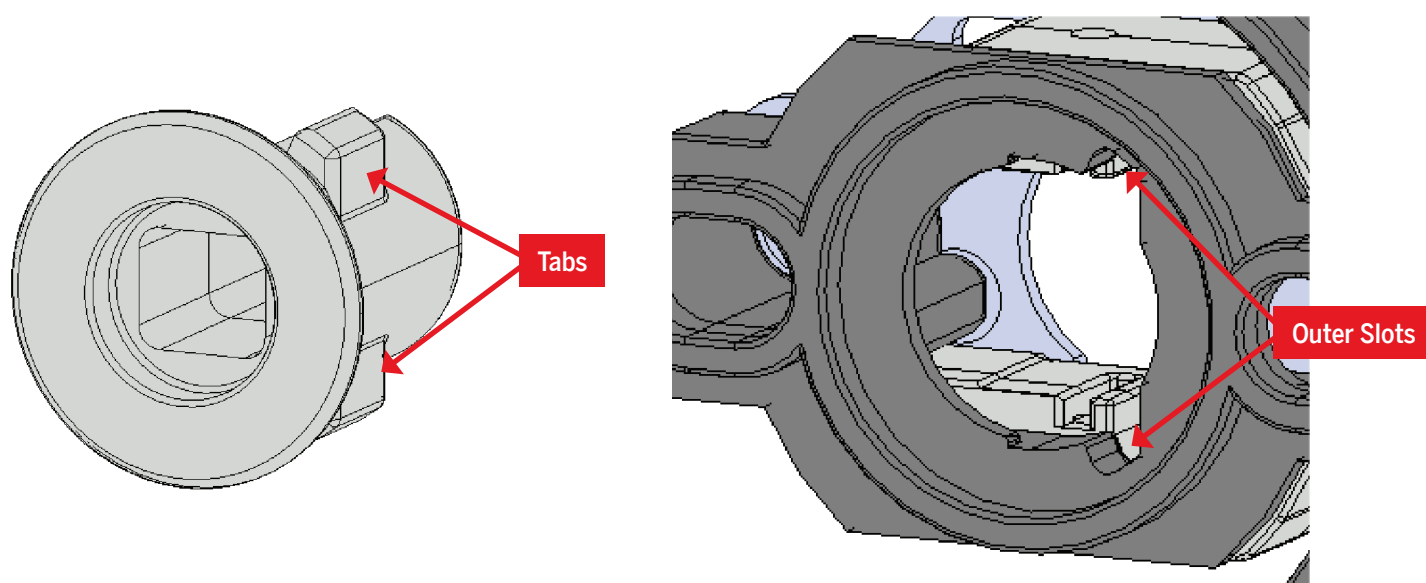
Insert appropriate adapter into bottom (latch drive) opening.

STEP 3

"Square Drive" adapter assembly - Schlage, Gatehouse, Defiant, Brinks & Masterlock



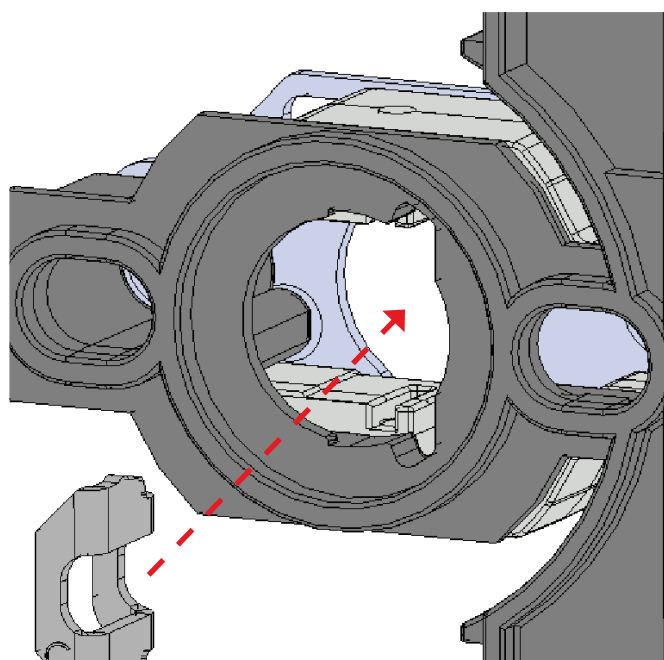
Insert with flange on this side. Push into lock until insert snaps into place. Press in until fully seated.



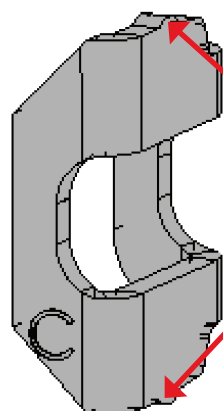
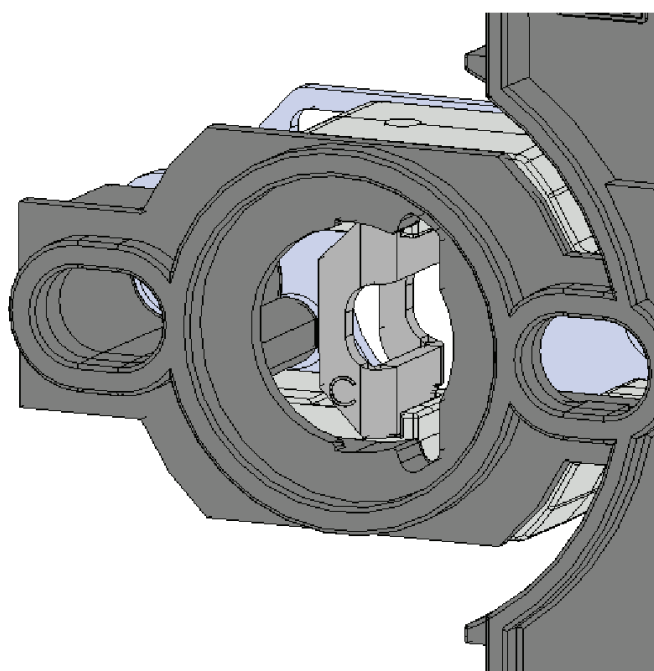
Align tabs on adapter with outer slots in drive opening.

STEP 4

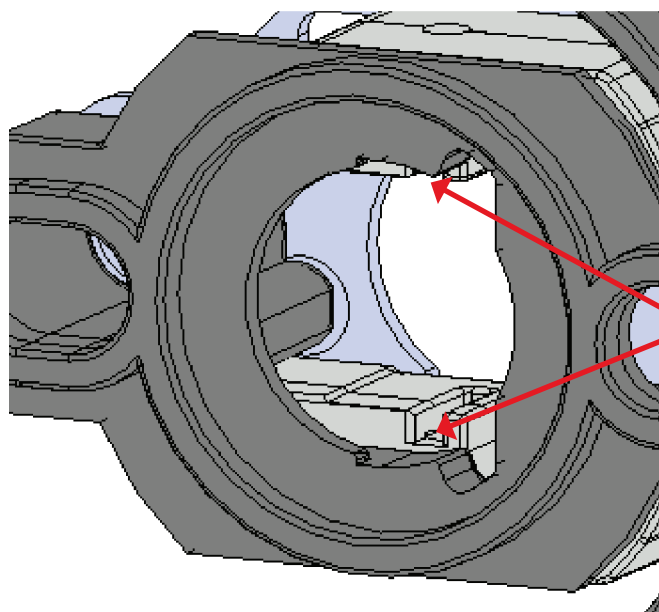
"C + Guide" adapter assembly



Insert with letter "C" on this side and opening on the right side.



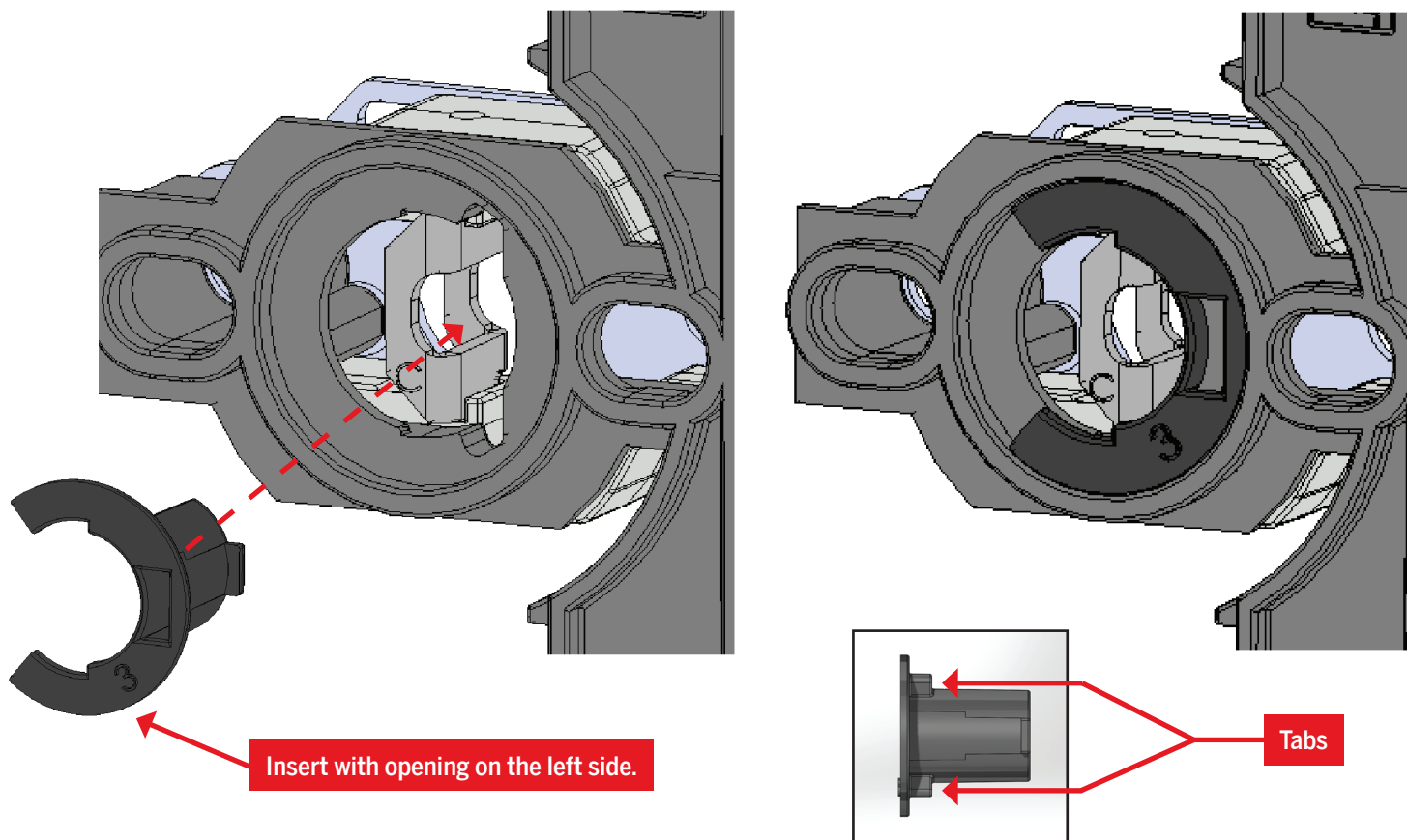
Tabs



Inner Slots

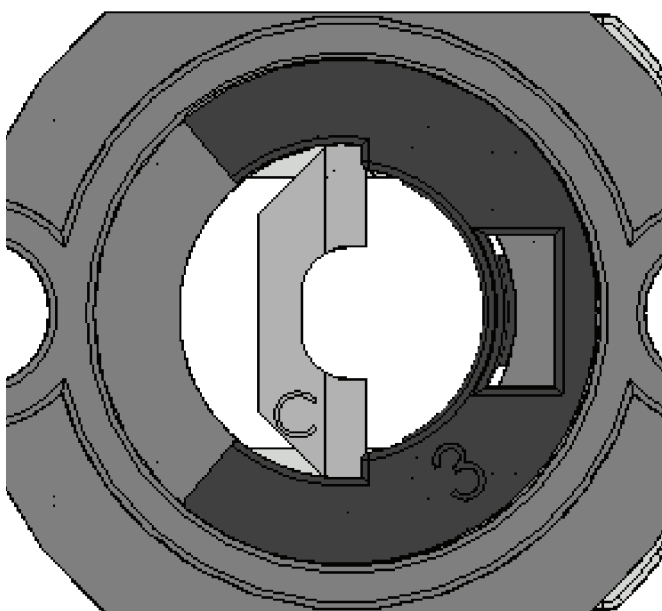
STEP 4 (CTD.)

"C + Guide" adapter assembly (CTD.)

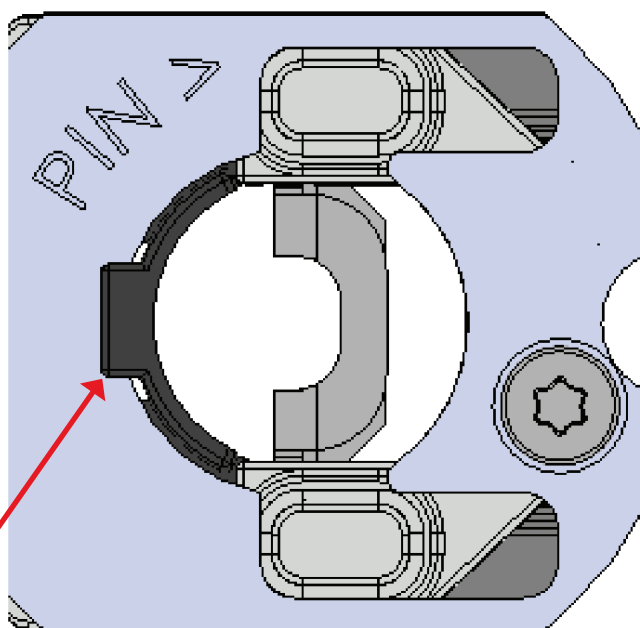


Align tabs on adapter with inner slots in drive opening.

Proper Orientation - Composite Side



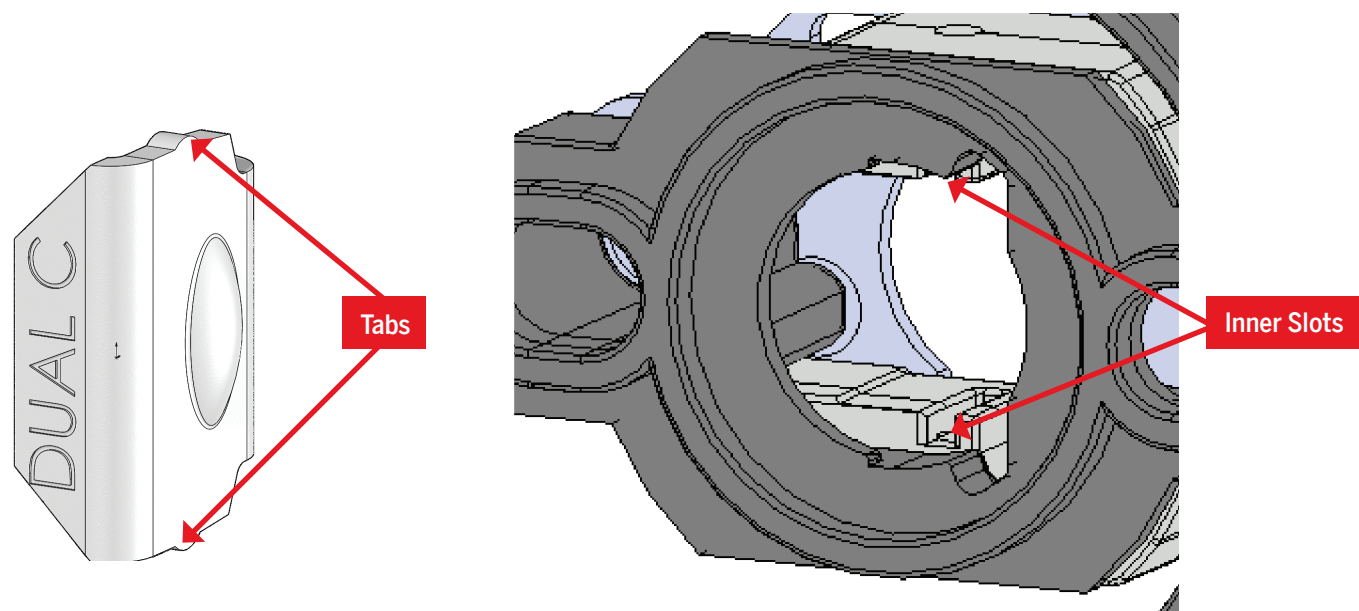
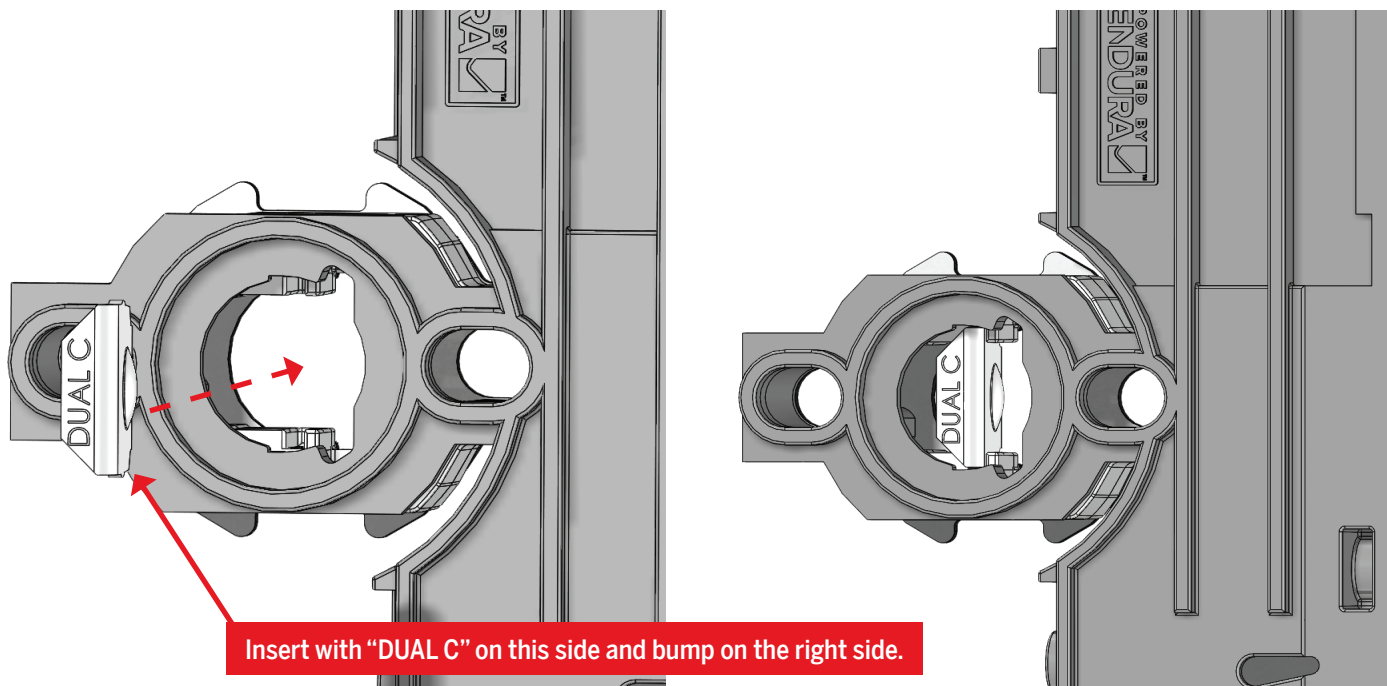
Proper Orientation – Metal Side



Tab snaps over surface of back face.

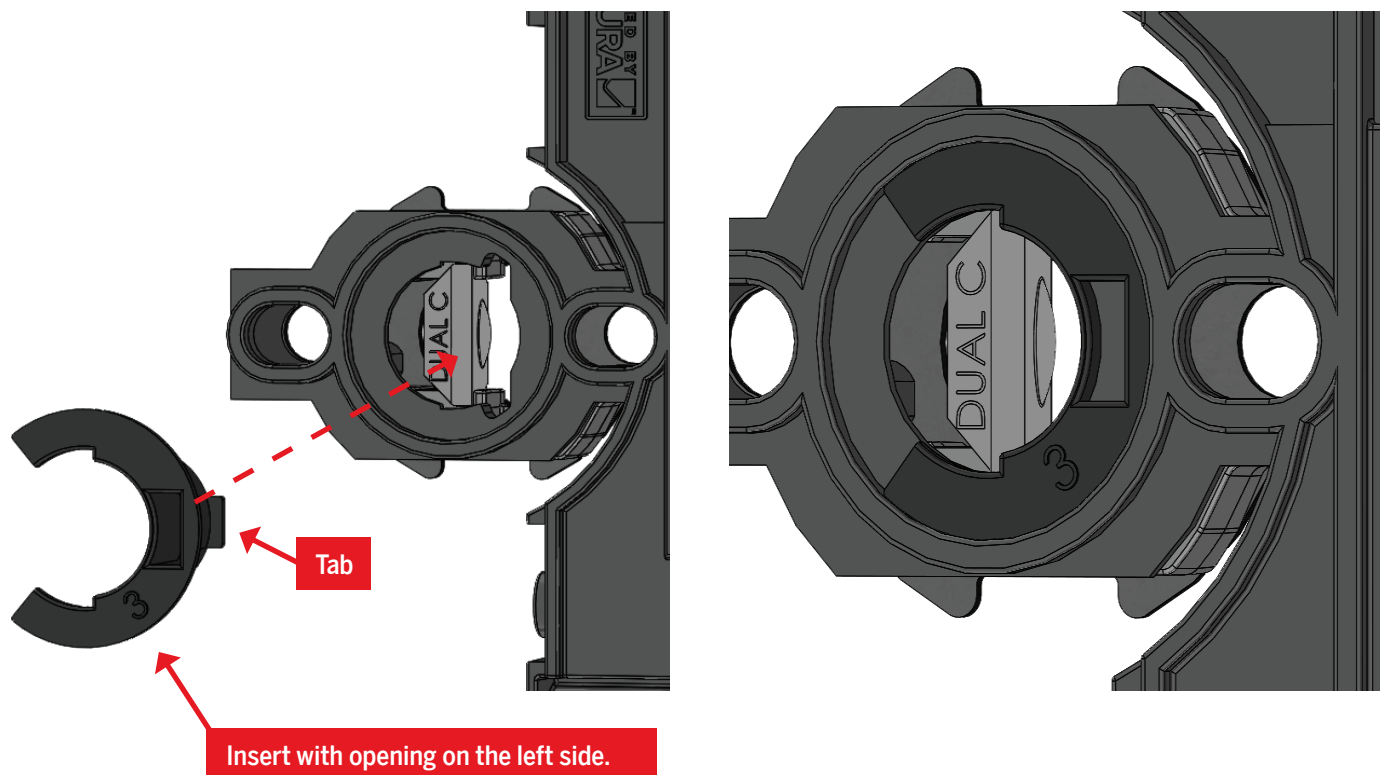
STEP 5

“Dual C + Guide” adapter assembly



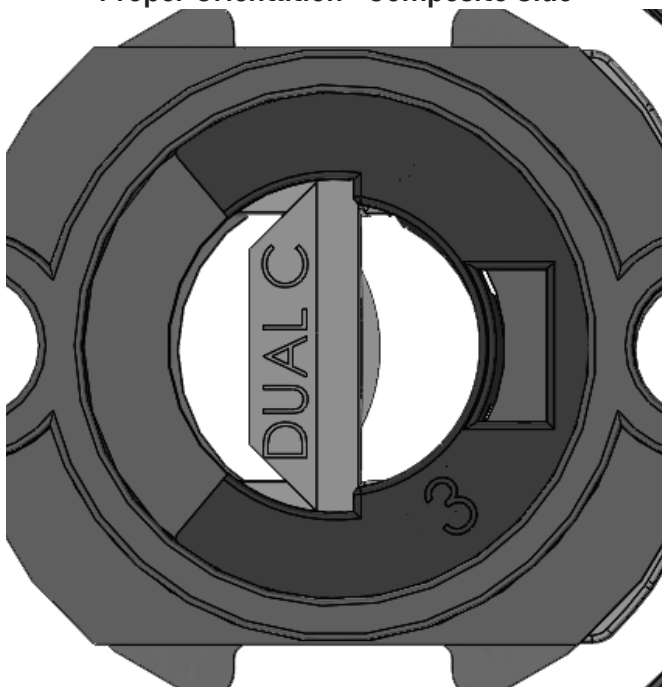
STEP 5 (CTD.)

“Dual C + Guide” adapter assembly (CTD.)

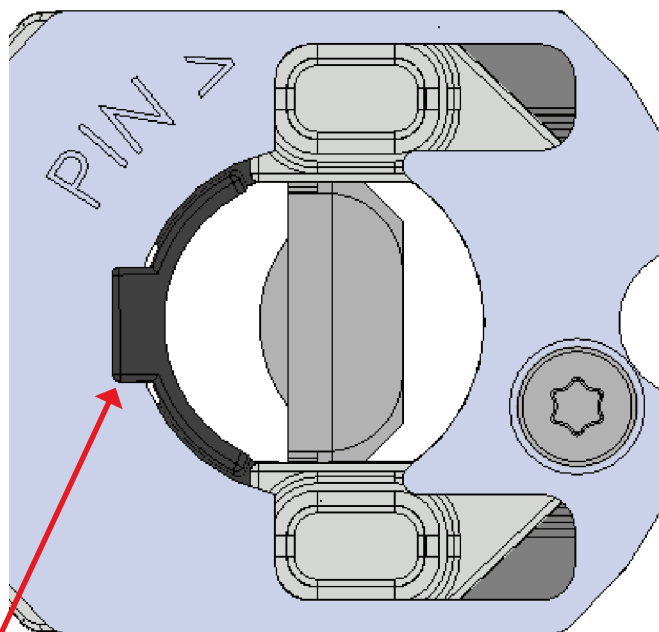


Align tabs on adapter with inner slots in drive opening.

Proper Orientation - Composite Side



Proper Orientation - Metal Side

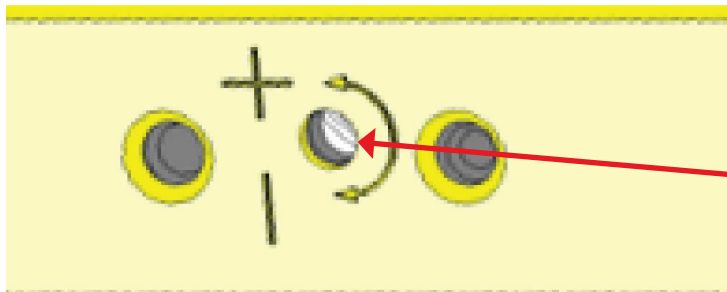


Tab snaps over surface of back face.

STEP 6

Assemble exterior and interior handle set to door with screws supplied by deadbolt manufacturer.

STEP 7



Use a flat head screwdriver to turn adjustment screw as needed to reduce force or remove thumb paddle sag.

With some thumbpress handlesets it may be necessary to adjust the lock internal spring mechanism to reduce the force needed to depress the thumbpress paddle, or to remove sag in the paddle.