

Cap Replacement/ Conversion

Cap orientation.

Standard Cap



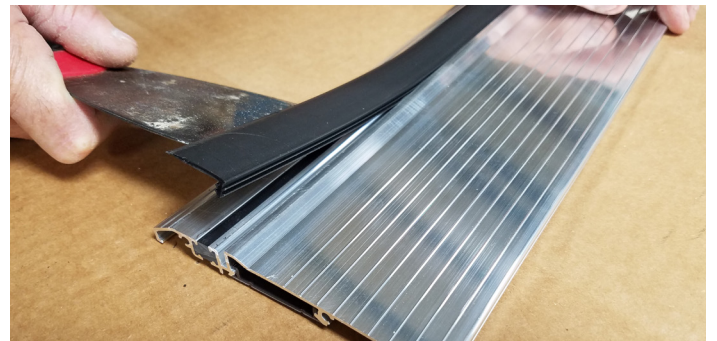
Tileback Cap



Step 1: Remove existing cap.

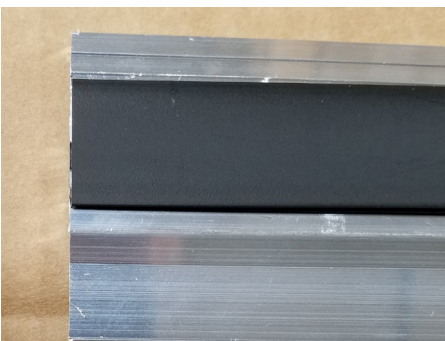


A. Insert a putty knife between the cap and sill at one end and twist to separate the cap and sill.



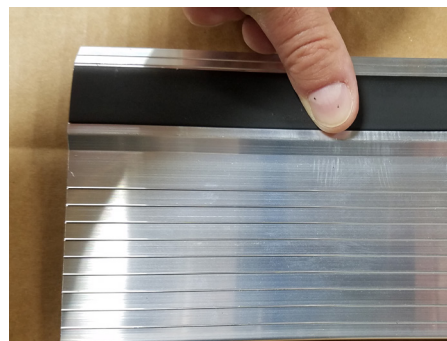
B. Pull the cap away from the sill towards the other end to remove.

Step 2: Insert New Cap



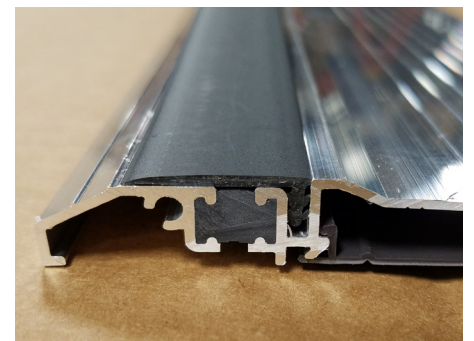
C. Cut the new cap to the length of the sill.

D. Align one end of the new cap with the sill end.



E. Insert and press the new cap attachment leg into sill slot at one end.

F. Continue to insert and press cap into slot along the length of the sill.



G. Ensure cap is flush with sill.