

TRILENNIUM[®]

MULTI-POINT LOCKING SYSTEMS

Protect your home. Preserve your style.



The perfect multi-point lock



Trilennium® Works.

Between impractical installation and the difficulty of keeping an 8' door straight, multi-point locks can be a nightmare for you. Poor alignment means service calls and unhappy homeowners. Not so with Trilennium®. Trilennium® Multi-Point Locking Systems work when others don't.

Makes everything Stronger.

A solid, one piece I-Beam runs the full length of the lock. That not only increases the strength and precision of the lock, but when Trilennium® is installed, it actually strengthens the door edge and prevents door warping over the life of the panel.

Three times Secure.

Trilennium® features three full deadbolt locks for ultimate strength and security. No hooks or catches that require unrealistic alignment and result in frequent service calls. Among the strongest and most secure in the industry, Trilennium® Multi-Point Locking Systems exceed Grade 30—or 300 ft-lbs x 2 of impact, per ASTM E 2395.

How Trilennium® works:



1. Look familiar? The door is misaligned. In other multi-point systems, the lock would fail to engage, resulting in an unhappy homeowner and costly service call for you or your customer. Not so with Trilennium®.



2. When the door is closed, the angled shoulder of Trilennium's Bolts pre-engage with the Roller Strikes to fight deflection at all times and deliver smooth operation time after time.



3. As lock is activated, Trilennium's patented Roller Strikes and Bolts pull the panel into perfect alignment, correcting misalignment in three directions, and arming the door with three deadbolts that cannot be compromised.

ck for an imperfect world.



Installation that's

Forgiving.

When a door unit leaves the shop, it can be perfect. But you can't control the rough opening, or what happens over time. Out of plumb. Out of square. Or worse. That's where we come in. Trilennium's patented system of bolts and roller strikes draws the door back into perfect alignment, correcting imperfections up to 3/16" in three directions.

Shop

Friendly.

Solid one-piece construction means no finicky lock pre-assembly before installing the lock in the door. The lock arrives ready to drop into a routed door stile.

Faster set-up, fewer steps in the shop and more accurate machining save time and money.

Easy to

Own.

Premium hardware is available for any door system in styles to match every decor. Unlike European-style systems, Trilennium® operates intuitively; a single turn of the key or thumb-turn activates all three deadbolts smoothly. Plus, with the Panic Release feature, just one turn of the interior lever deactivates all three bolts at once for even easier operation.



Heavy-duty rails with precise router carrier, guides, bridges, stops and cross-bore guides make installation simple and flawless.



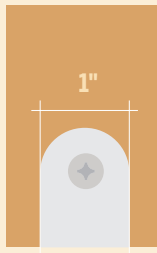
Panic Release opens the lock with a single downward turn of the interior lever.



3000

Single Door
Active Panel of Double Door
Book Edge

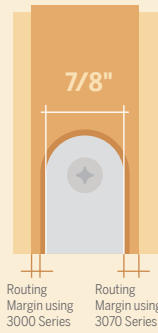
1" Face Plate
The 3000 delivers the strength and security of the Trilennium® Multi-Point Locking System to standard 1.75" book edge doors.



3070

Single Door
Active Panel of Double Door
Proud Edge

7/8" Face Plate
Better routing margins and fit for proud edge or bull nose door stiles. Allows specification for more door panels.



3500

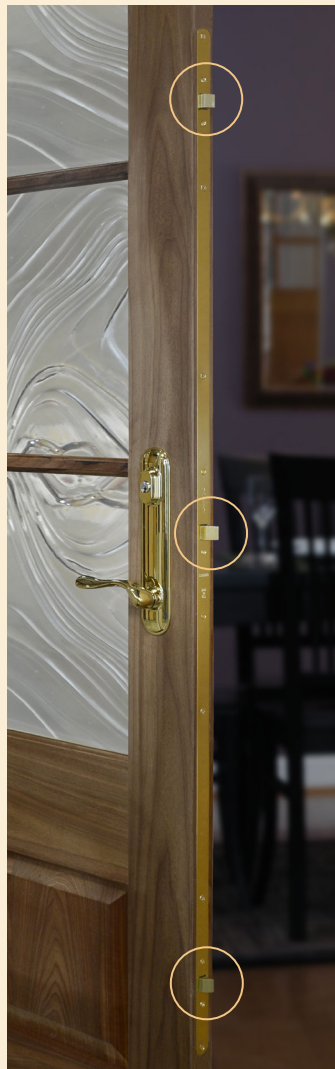
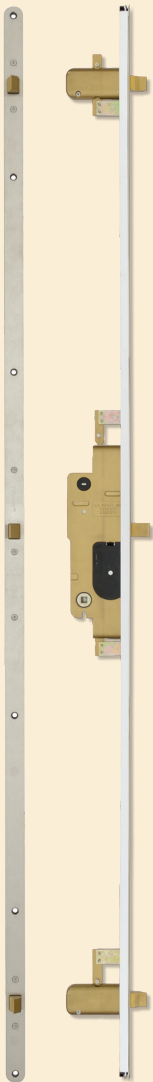
Double Door
Active Panel

3020 Compatible Only

1" Face Plate
The 3500 runs the full length of the door stile and provides two additional lock points into the header and sill for the active panel of double door applications. Delivers maximum strength and maximum security within the Trilennium® lock series.



Detail: Flush Bolt



3000/3070 BENEFITS:

- 3-Point Locking, industry-leading strength and protection
- Patented I-Beam Construction
- Fights deflection, prevents and corrects panel misalignment
- Easy operation, now and in the years to come

3000/3070 OPTIONS & COMPATIBILITY FOR DOUBLE DOORS:

- 3000/3070 + 3020 (with Dummy Astragal)
- 3000/3070 + Trilennium Compatible Astragal

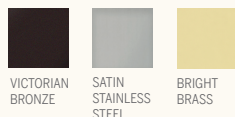
3500 BENEFITS:

- 5-Point Locking, enhanced strength and protection
- Patented I-Beam Construction
- Fights deflection, prevents & corrects panel misalignment
- Easy operation, now and in the years to come

3500 OPTIONS & COMPATIBILITY FOR DOUBLE DOORS:

- 3500 + 3020 (with Dummy Astragal)
- 3500 + Magnum Bolts (with Dummy Astragal)
- Not Compatible with Trilennium Compatible Astragal

3000/3500 FACE PLATE FINISHES



VICTORIAN BRONZE

SATIN STAINLESS STEEL

BRIGHT BRASS

3070 FACE PLATE FINISHES



VICTORIAN BRONZE

SATIN STAINLESS STEEL

3000/3070/3500 STRIKE PLATE FINISHES



VICTORIAN BRONZE

SATIN STAINLESS STEEL

BRIGHT BRASS

SATIN NICKEL

BLACK

3020

Double Door Inactive Panel

1" Width

The I-Beam construction of the 3020 overcomes inherent inactive door panel weakness. The 3020 eliminates panel deflection and provides a solid metal cup for the deadbolt. Both features greatly increase the strength and security of the inactive door.



Detail: Bolt Receiver



INSIDE VIEW:
Trilennium handset operates inactive panel and delivers consistent style.

3020 BENEFITS:

- 7-Point Locking (with 3500)
- Inactive Panel Operated by Handset
- Patented I-Beam Construction for Inactive Panel

3020 OPTIONS & COMPATIBILITY FOR DOUBLE DOORS:

- 3020 + 3000
- 3020 + 3070
- 3020 + 3500

3020 STRIKE PLATE FINISHES



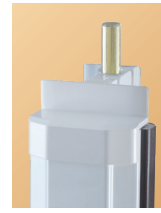
VICTORIAN BRONZE SATIN STAINLESS STEEL BRIGHT BRASS

Endura Trilennium® Compatible Astragal

Double Door Inactive Panel

Works with 3000 and 3070

The Endura Trilennium® Compatible Astragal is an Endura Ultimate Astragal configured to work with Trilennium® locks. Two additional locking points and the unbeatable weather protection of the Ultimate Flip Lever™ Astragal combine with the strength and security of the Trilennium® Multi-Point Locking System for a powerful French door solution.



Detail: Flush Bolt



INSIDE VIEW:
Dummy handset delivers consistent style for inactive panel.

FLIP LEVER:
Patented Flip Lever seals the unit and operates inactive panel.

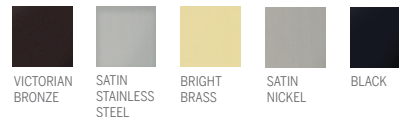
TRILENNIUM COMPATIBLE ASTRAGAL BENEFITS:

- 5-Point Locking (with 3000/3070)
- Patented Flush Bolt, Floating Boot System - Enhanced sealing, forgiving installation
- Patented Flip Lever + Matching Dummy Handset for easy operation, consistent style
- Cost efficient - no extra materials needed, system pre-built within astragal.
- Easy assembly, installation - No extensive routing. System housed within astragal.

TRILENNIUM ASTRAGAL OPTIONS & COMPATIBILITY FOR DOUBLE DOORS:

- 3000
- 3070

TRILENNIUM COMPATIBLE ASTRAGAL STRIKE PLATE FINISHES



VICTORIAN BRONZE SATIN STAINLESS STEEL BRIGHT BRASS SATIN NICKEL BLACK

Level One Trilennium® Hardware



ALSO AVAILABLE
IN GRIP HANDLE

Eclipse Entry Set
SHOWN IN SATIN NICKEL

Available in:



Victorian Bronze* Satin Nickel* Bright Brass Black



Pinnacle Entry Set
SHOWN IN VICTORIAN BRONZE

Available in:



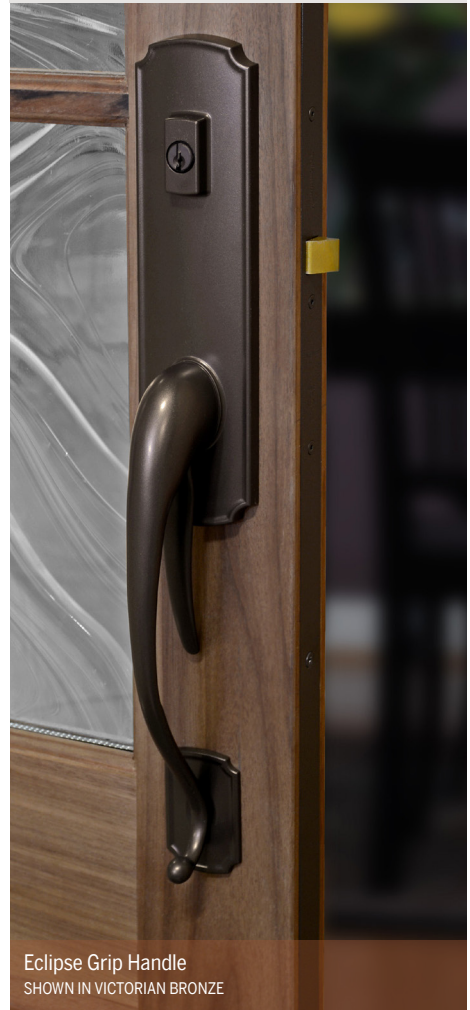
Victorian Bronze* Satin Nickel* Bright Brass

The Trilennium Hardware collection combines elegant design with precision engineering for beautiful, reliable performance.

Trilennium Hardware is available in entry, inactive and dummy functions.



Re-key in seconds with SmartKey™ compatibility.



Eclipse Grip Handle
SHOWN IN VICTORIAN BRONZE

Available in:



Victorian Bronze* Satin Nickel* Bright Brass Black



Rectangular Entry Set
SHOWN IN BLACK

Available in:



Victorian Bronze Satin Nickel Black



Horizon Entry Set
SHOWN IN BRIGHT BRASS

Available in:



Victorian Bronze Satin Nickel Bright Brass

Trilennium Hardware Lever Options



Eclipse Lever
SHOWN IN SATIN NICKEL



Pinnacle Lever
SHOWN IN VICTORIAN BRONZE



Rectangular Lever
SHOWN IN BLACK



Curved Lever
SHOWN IN VICTORIAN BRONZE



Horizon Lever
SHOWN IN BRIGHT BRASS

Eclipse and Pinnacle, and Rectangular and Curved levers are interchangeable and available upon request on all new orders.



Curved Entry Set
SHOWN IN SATIN NICKEL

Available in:



Victorian Bronze Satin Nickel Black

Level Two EMTEK®



Modern Entry Set
SHOWN IN POLISHED CHROME



Stainless Steel Entry Set
SHOWN IN BRUSHED STAINLESS STEEL



Arched Entry Set
SHOWN IN MEDIUM BRONZE PATINA



Rectangular Entry Set
SHOWN IN MEDIUM BRONZE PATINA



Tuscany Entry Set
SHOWN IN FLAT BLACK PATINA

EMTEK® brings interesting, well made hardware back into American homes. All EMTEK® Hardware is available for entry, patio, inactive and dummy functions.

EMTEK® Lever Options

Available levers appear below escutcheon types.

Modern	Stainless Steel	Rectangular & Arched
Aireon SHOWN IN SATIN NICKEL	Poseidon SHOWN IN OIL RUBBED BRONZE	Athena SHOWN IN BRUSHED STAINLESS
Argos SHOWN IN SATIN NICKEL	Sion SHOWN IN POLISHED CHROME	Cologne SHOWN IN BRUSHED STAINLESS
Athena SHOWN IN FLAT BLACK	Stuttgart SHOWN IN POLISHED CHROME	Dresden SHOWN IN BRUSHED STAINLESS
Basel SHOWN IN OIL RUBBED BRONZE	Triton SHOWN IN SATIN NICKEL	Helios SHOWN IN BRUSHED STAINLESS
Geneva* SHOWN IN OIL RUBBED BRONZE	Hermes SHOWN IN BRUSHED STAINLESS	Aurora SHOWN IN MEDIUM BRONZE
Hercules SHOWN IN POLISHED CHROME	Hercules SHOWN IN BRUSHED STAINLESS	Cody SHOWN IN FLAT BLACK
Helios SHOWN IN OIL RUBBED BRONZE	Kiel SHOWN IN BRUSHED STAINLESS	Cimarron SHOWN IN MEDIUM BRONZE
Hermes SHOWN IN SATIN NICKEL	Poseidon SHOWN IN BRUSHED STAINLESS	Durango SHOWN IN MEDIUM BRONZE
Luzern SHOWN IN OIL RUBBED BRONZE	Stuttgart SHOWN IN BRUSHED STAINLESS	Montrose SHOWN IN MEDIUM BRONZE
Mercury SHOWN IN FLAT BLACK		Teton SHOWN IN MEDIUM BRONZE
		Lariat SHOWN IN MEDIUM BRONZE
		Yuma* SHOWN IN MEDIUM BRONZE

Tuscany
Medici SHOWN IN MEDIUM BRONZE
Napoli SHOWN IN MEDIUM BRONZE
Octagon SHOWN IN FLAT BLACK
Padua SHOWN IN MEDIUM BRONZE



Rectangular Entry Set
SHOWN IN MEDIUM BRONZE

Finishes

- OIL RUBBED BRONZE
- SATIN NICKEL
- POLISHED CHROME
- SATIN BRASS
- MEDIUM BRONZE PATINA
- TUMBLED WHITE BRONZE
- FLAT BLACK
- FLAT BLACK BRONZE PATINA
- BRUSHED STAINLESS STEEL



Finish Availability

MODERN	1, 2, 3, 4, 7
STAINLESS	9
ARCHED	5, 6, 8
RECTANGULAR	5, 6, 8
TUSCANY	5, 8

* For use on single door application only.

NOTE: EMTEK has a 3-5 week lead time. All sales are final.

Level Three Rocky Mountain Hardware®



Curved Entry Set
SHOWN IN SILICON BRONZE MEDIUM



Rectangular Entry Set
SHOWN IN SILICON BRONZE DARK



Stepped Entry Set
SHOWN IN SILICON BRONZE MEDIUM



Arched Entry Set
SHOWN IN WHITE BRONZE MEDIUM



Fleur De Lis Entry Set
SHOWN IN SILICON BRONZE LIGHT



Arched Handle Grip Set
SHOWN IN SILICON BRONZE RUST

Rocky Mountain Hardware Lever Options

Each escutcheon may be combined with any of the following levers and is available in your choice of ten patina finishes.



L127 M, L156 L
SCROLL LEVER
IN SILICON
BRONZE, DARK



L101
LONGHORN LEVER
IN SILICON
BRONZE, RUST



L110 M, L128 S
CLASSIC LEVER
IN SILICON BRONZE,
MEDIUM



L130
MONARCH LEVER
IN WHITE BRONZE,
MEDIUM



L102
SQUIRREL TAIL
LEVER IN SILICON
BRONZE, LIGHT



L111
TWIG LEVER
IN SILICON BRONZE,
RUST



L132
SQUARE TWIST
LEVER IN WHITE
BRONZE, LIGHT



L103 M, L112 L
CHUB LEVER
IN WHITE
BRONZE, MEDIUM



L115 M, L158 L
ACANTHUS LEVER
IN SILICON BRONZE,
MEDIUM



L135 M, L147 L
OLYMPUS LEVER
IN WHITE BRONZE,
LIGHT



L104 M, L122 L
HOOK LEVER
IN SILICON
BRONZE, RUST



L117 M, L120 L
L241 L
FRENCH LEVER IN
SILICON BRONZE,
DARK



L140 M, L151 L
HARRINGTON LEVER
IN SILICON
BRONZE, MEDIUM



L105
BEAVER TAIL LEVER
IN SILICON
BRONZE, RUST



L118
FRENCH TWIST
LEVER IN SILICON
BRONZE, RUST



L150
BELLA LEVER
IN SILICON
BRONZE, DARK



L106
TALON LEVER IN
SILICON BRONZE,
LIGHT



L121 M, L141 L
ROCK CREEK LEVER
IN WHITE
BRONZE, MEDIUM



L160
WING LEVER
SILICON BRONZE,
LIGHT



L107
SLUGGER LEVER
IN SILICON BRONZE,
MEDIUM



L123
OLD WORLD LEVER
IN WHITE
BRONZE, MEDIUM



L163
EURO LEVER
IN SILICON
BRONZE, MEDIUM



L108
TUBE LEVER
IN WHITE BRONZE,
LIGHT



L127 M, L156 L
SCROLL LEVER IN
WHITE BRONZE,
MEDIUM



L224 M, L228 L
RIDGE LEVER
IN SILICON
BRONZE, MEDIUM



L109 M, L119 L
LEGACY LEVER
IN SILICON
BRONZE, MEDIUM



L126
TRIPLE TWIST
LEVER IN WHITE
BRONZE, LIGHT



L580
MADDOX LEVER
IN WHITE
BRONZE, MEDIUM



L174
LARIAT LEVER
IN SILICON
BRONZE, DARK



L175
BAMBOO LEVER
IN SILICON BRONZE,
MEDIUM



L276
FALCON LEVER
IN WHITE
BRONZE, MEDIUM



L301 M, L302 L
STRAP LEVER
IN SILICON
BRONZE, BRUSHED



L304
REED LEVER
IN WHITE BRONZE,
BRUSHED



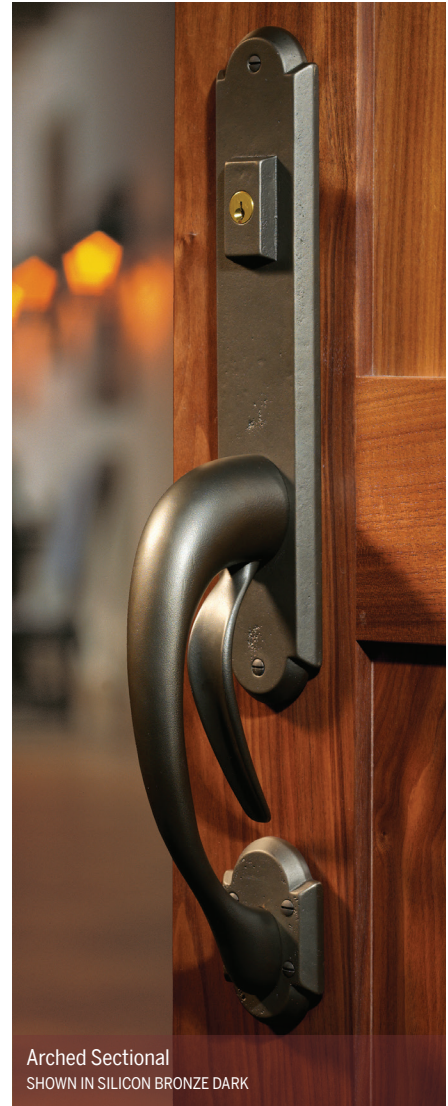
L307
JANE LEVER
IN SILICON BRONZE,
DARK



L310
POOL LEVER
IN WHITE BRONZE,
LIGHT



L314
UJ LEVER
IN SILICON BRONZE,
DARK



Arched Sectional
SHOWN IN SILICON BRONZE DARK

Every Rocky Mountain Hardware Entry set is available in all the styles listed below:

Entry Set

Entry, patio, inactive and dummy functions.

Grip Set

Grip sets are available in both *one-piece* and *sectional** styles for entry, patio, inactive and dummy functions.

*Fleur De Lis is not available in the Sectional Grip Set.

FINISHES

1. SILICON BRONZE LIGHT
2. SILICON BRONZE MEDIUM
3. SILICON BRONZE DARK
4. SILICON BRONZE RUST
5. SILICON BRONZE BRUSHED
6. WHITE BRONZE LIGHT
7. WHITE BRONZE MEDIUM
8. WHITE BRONZE DARK
9. WHITE BRONZE BRUSHED
10. SILICON BRONZE DARK LUSTRE



TRILENNIUM® ACCESSORIES

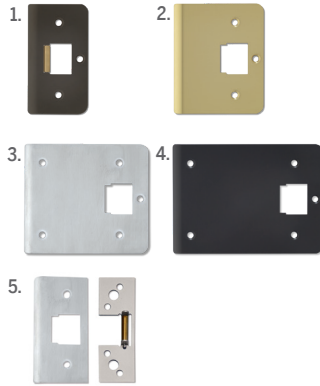
Strike Plates

1-3/4" and 2-1/4" strike plates are available.

Custom strike plates available up to 5-31/32".*

1. 1-3/4" Strike
2. Extended Strike 3-1/4"**
3. Extended Strike 4-1/2"**
4. Extended Strike 5-1/2"**
5. Endura Trilennium® Compatible Strike Kit**

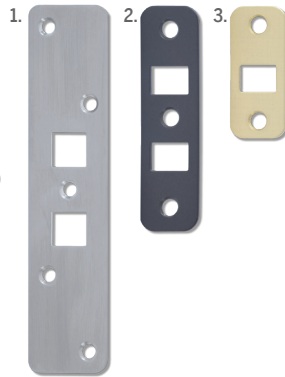
*Set up charge applies.
**Sold separately.



Head and Sill Receiver Kit

Mounts in header and sill to receive flush bolts for Trilennium® 3500 and 3020 lock sets or Magnum Bolts.

1. High Performance Kit For 3500/3020
2. Standard Kit 3500/3020
3. Standard Kit 3020



HANDSET FINISH AVAILABILITY

ECLIPSE & ECLIPSE GRIP



Victorian Bronze* Satin Nickel* Bright Brass Black

RECTANGULAR & CURVED



Victorian Bronze Satin Nickel Black

PINNACLE



Victorian Bronze* Satin Nickel* Bright Brass

HORIZON



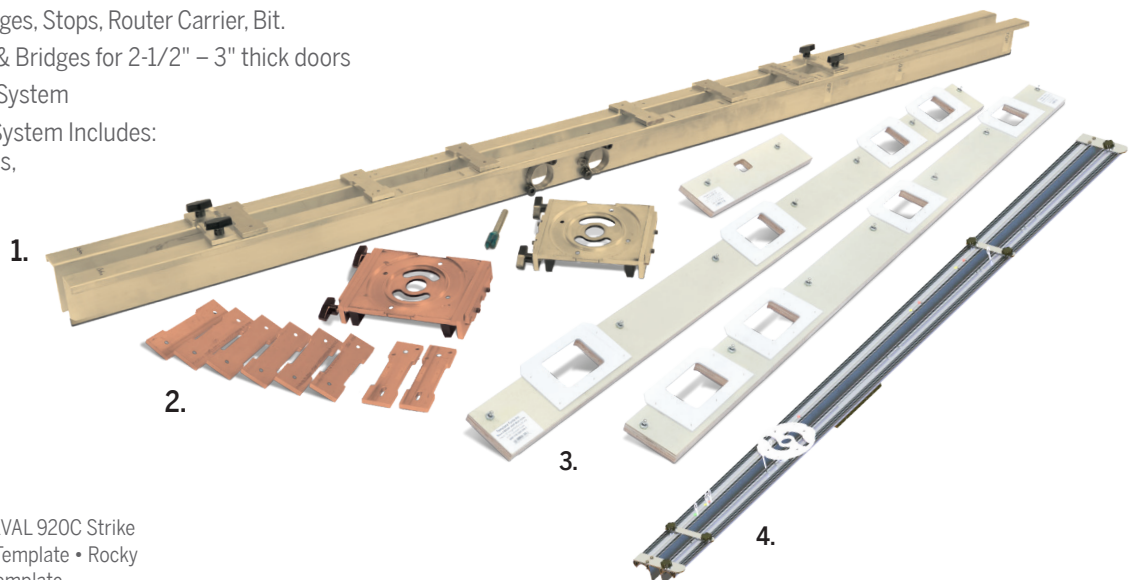
Victorian Bronze Satin Nickel Bright Brass

* Available in TriLast™ Finish

Trilennium® Template Routing Systems

Complete template systems for routing the door stile and jamb are available including:

1. Trilennium® Template System Includes: Template Rails, Bridges, Stops, Router Carrier, Bit.
2. Thick Stile Router Carrier & Bridges for 2-1/2" – 3" thick doors
3. Templaco Jamb Template System
4. Trilennium® RS Template System Includes: Router Carrier, Template Rails, Stops and Router Bit.



Also Available

Norfield 250M Strike Template • KVAL 920C Strike Template • Eclipse Entrance Grip Template • Rocky Mountain Hardware Escutcheon Template

Magnum Bolts

Enhance wood astragal strength with Magnum Flush Bolts.



9" FOR 6'-8" DOORS
19" VERSION FOR 8'+ DOORS

Construction Handles

Keep Trilennium® hardware safe during construction by using construction handles until final walkthrough. Available in 1-3/4", 2-1/4", 2-3/4" and 3" sizes.



Outswing Sill Cup

For use on outswing sill applications to provide a sealed locking point for the bottom flush bolt of the 3020 or Magnum Bolt.



Dust Box

Installs behind the strike plate to keep debris out and improve appearance.



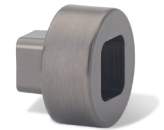
Panic Arm Conversion Kit

Allows panic release feature to be disabled.



Trilennium Lever Spacer Kit

Extends Trilennium® lever 1/2" out from the door panel for extra clearance on doors with decorative panels. Maximum two spacers can be used for 1" clearance.



TRILENNIUM® STRONG.

There is no comparison.

Don't Just Take Our Word For It.

With Trilennium, strength, quality and reliable performance are more than just marketing fluff. We're committed to ensuring this performance through rigorous testing, competitive warranties and meticulous quality inspections to deliver a product you can proudly stand behind.

Top Quality. Our Promise.

When you order your handsets through Endura Products, we ensure that you receive the proper product to drive your system, regardless of your application. Our Quality Assurance group individually inspects each handle set for proper design, function, handing and finish. If an issue does arise, we're standing by with spare parts on hand to repair or replace, saving you time and headaches.

Trilennium Testing Results

ASTM E 2395

	GRADE 10	GRADE 20	GRADE 30
Test 1, At Lock, Static Load	300 lbf	500 lbf	800 lbf
Test 2, At Lock and Corner, Static Loads	300 lbf	500 lbf	800 lbf
Test 3, At Lock, Impact Loads	300 ft-lb x 2	300 ft-lb x 2	300 ft-lb x 2

Specification ASTM E 2395 measures the resistance of the door assembly to forced entry by an intruder. The higher the grade the unit passes, the greater the unit's strength, security and performance. Trilennium® Multi-Point Series 3000 and 3070 surpassed Grade 30 in dynamic entry testing.

Testing was based on ASTM E 2395 Standard Test Methods for Security of Swinging Door Assemblies. Door units were assembled then installed in a 2x rough opening according to normal procedures. A 100 lb weight was hung from above the unit, with its impact point positioned at the lock block. The weight was pulled back a specific distance for each load level, then allowed to swing into the door unit towards the panel open direction. The weight impacted the door two times at each load level. If, after impact, the door stayed closed, or if holes created were small enough to prevent reaching in to unlock the door, then the unit passed the test. Single, inswing door units were used for all locks. Panels used were 8' Plastpro, 6-panel, smooth fiberglass. Frames were 4-9/16" finger jointed eastern white pine.

