



At Endura, we understand that continually improving performance is key to being an industry leader in product durability, quality and integrity. That is why our extensive research and certified testing produce the finest weathersealing products in the industry. We take a critical look at existing products and strive to create new solutions for our customers.

DEDICATION TO PRODUCTION INNOVATION: SIMPLE SOLUTION® CORNER PAD

The Simple Solution Corner Pad is a perfect example of our dedication to developing unique and innovative products that outperform all others. When Endura door system testing showed that exterior air pressure can force water up into the interior column of the weatherstrip, the Simple Solution Corner Pad was created. It has continued to be perfected throughout the years, and the following table shows that the Simple Solution Corner Pad performs, even when strike margins reach 3/16".

Simple Solution Corner Pad		
Sill Type	Strike Margins	DP Rating (Water)
Z-AC	1/8"	50
	5/32"	60
	3/16"	45
ZAI	1/8"	45
	5/32"	50
	3/16"	40

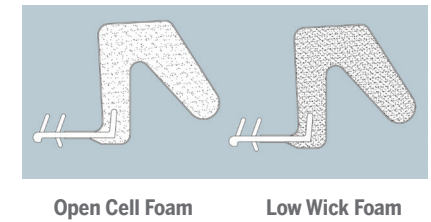
RESEARCH AND TESTING

- Extensive research and rigorous testing under real-world conditions
- Not resting on current product performance – our design and engineering team is constantly improving water and air resistance

ELIMINATING WEAR AND TEAR

- We recognize that resilience and durability are the keys to long-lasting performance
- Our products snap back to original form after compression

IMPROVED PERFORMANCE: ENDURA'S LOW-WICK WEATHERSEALS



Endura offers weathersealing with reduced wicking tendency. The foam formulation has been modified to provide a combination of closed-cell and open-cell structure. Any moisture that may wick into the foam has its travel and subsequent volume restricted once it contacts the closed cells.

The low water wicking foam absorbs over 50% less water. The Low Wick Foam is standard with PE650 & Simple Solution Corner Pads.

WEATHERSTRIPPING

PE650 Low Wick Weatherstrip
(Exposed Barb Kerf In Weatherstrip)

QEBD650 Weatherstrip
(Exposed Barb Kerf In Weatherstrip with .650" Reach)

QEBD730 Weatherstrip
(Exposed Barb Kerf In Weatherstrip with .730" Reach)

QEBD825 Weatherstrip
(Exposed Barb Kerf In Weatherstrip with .825" Reach)

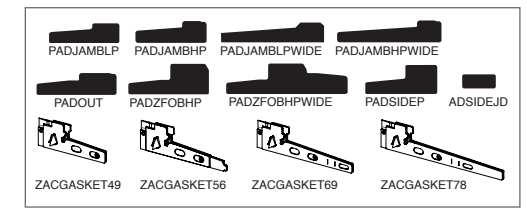
QEBD928 Weatherstrip
(Exposed Barb Kerf In Weatherstrip with .928" Reach)

QEB M570 Weatherstrip
(Exposed Barb Kerf In Weatherstrip with .570" Reach)

QEB M670 Weatherstrip
(Exposed Barb Kerf In Weatherstrip with .670" Reach)

MGB Weatherstrip
(Exposed Barb Kerf In Weatherstrip with .470" Reach)

SILL GASKETS



DOOR BOTTOMS

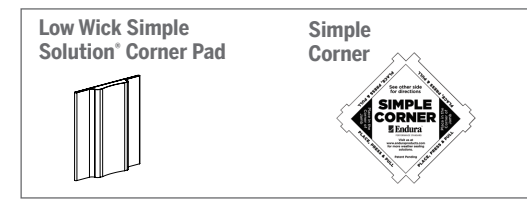
Staple-On Door Bottoms

Kerfed Door Bottoms

Screw On Door Bottoms (Steel Edged Doors)

Aluminum Screw On Door Bottoms

WEATHERSEALS



Endura Products is Energy Star compliant and works closely with the organization and their Home Sealing Program. While our products are known for reducing damage associated with water infiltration, our components also serve as a barrier to exterior air. Reducing air infiltration makes maintaining room temperature easy, while reducing the amount of energy needed to power heating and cooling systems.



8817 W. Market St., Colfax, NC 27235
1.800.334.2006 www.enduraproducts.com



Proven Performance and Protection
Weathersealing Powered by Endura®

Endura's weathersealing products have a proven reputation for keeping the elements outside of your door system and home. Our unique and innovative weathersealing solutions have been tested and proven to create the ideal barrier for wind or wind-driven rain. Products including the Simple Solution® Corner Pad, Weatherstrip and Door Bottoms are durable and dependable, providing constant protection against the infiltration of water and the elements. Small in size, big in impact—these products are crucial components in overall door system performance.



Innovation protected under patents and patents pending in U.S. and Canada. See www.EnduraPatents.com. Effective 8.18 Form# WSBro-18

REAL-WORLD SOLUTIONS

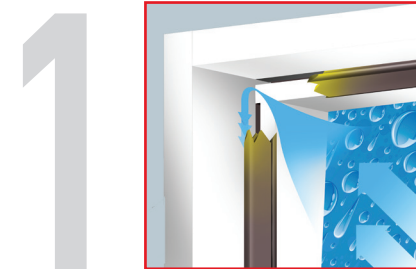
Weathersealing by Endura provides real-world solutions to real-world problems. Though small in size, each of Endura's weathersealing components are integral to maximum protection from water and other elements. Our line of weathersealing products are:

- Designed, manufactured and tested to provide a lasting seal, protecting from water and air infiltration
- Proven to perform in the field
- Resilient and constructed with the most durable materials
- Designed for consistent compression
- Easy to install
- Designed to work together with other Endura weathersealing components



WEATHERSEALING PROBLEMS AND ENDURA'S PRODUCT SOLUTIONS

At Endura, we take a critical look at weathersealing product performance to identify problems and create real-world solutions.



PROBLEM:

When a door is warped or bowed, the seal can be compromised by high air pressure.

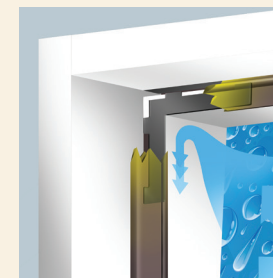
SOLUTION: Endura's Simple Corner

The Simple Corner is a creative solution by Endura, that works in conjunction with existing compression weatherstrip to block water and air infiltration at the upper corners of the door unit. The Simple Corner is:

- Constructed of a long-life foam
- Easily installed behind the weatherstrip of the header and side frame to increase contact between the door and weatherstrip
- Keeps area sealed when subjected to high air pressure when door is warped or bowed



The Simple Corner



The Simple Corner installed behind weatherstrip



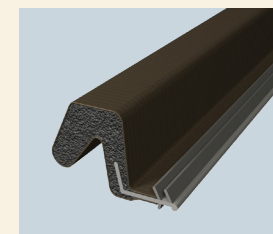
PROBLEM:

Weatherstripping can become kinked or bunched in the door system resulting in poor performance.

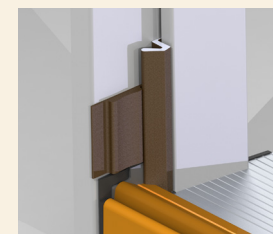
SOLUTION: Endura Weatherstrip

The memory of the weatherstrip is crucial so that when the door is opened, the weatherstrip springs back open and still functions when the door is closed again. Weatherstrip with poor memory will crumble, bend & become ineffective. Endura's weatherstrip:

- Snaps back into shape when bent or twisted
- PE650 with low wick foam absorbs over 50% less water



PE650 Weatherstrip



PE650 Weatherstrip & Simple Solution™ Corner Pad Interaction



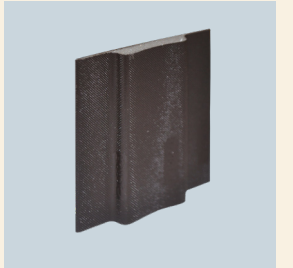
PROBLEM:

Endura discovered that wide margins, air pressure and a loose seal between the panel and frame, causes water to flow up the interior column of the weatherstrip into the door system causing damage.

SOLUTION: Simple Solution® Corner Pad

Air pressure on the exterior of a door system can cause water to flow up the interior column of the weatherstrip in a "straw effect." The Simple Solution Corner Pad:

- Helps seal doors with wide margins
- Counteracts upward water travel in weatherstrip column, and forms a tight seal between the panel and frame.
- Prevents costly water damage due to water intrusion
- Standard with low wick foam



Simple Solution Corner Pad



Simple Solution Corner Pad Installed



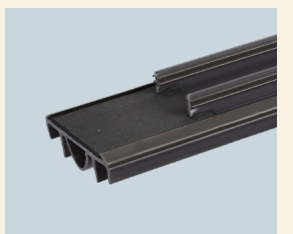
PROBLEM:

Traditional "fin" door bottom designs can lose shape and are unable to keep close contact with the sill.

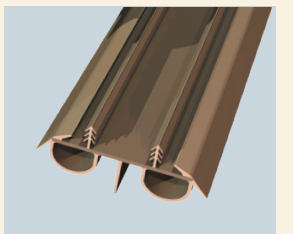
SOLUTION: Endura Door Bottoms

Endura's door bottoms offer a superior barrier against air and water. The innovative designs and durable materials:

- Allow the door bottom to retain its shape and maintain tight contact with the sill
- Prevent intrusion of the elements while minimizing door operating loads
- Staple-On, Kerfed & Screw-On options available



Z-AC™ Door Bottom



Leading Edge Door Bottom