

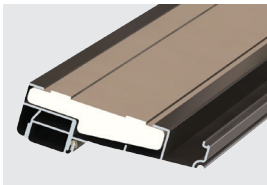


## BUILD THE Z-ALL ALUMINUM SILL YOU NEED.

Tough, durable and an absolute must for extreme environments. The Z-All Aluminum Lineal Sill combines cutting flexibility with all-aluminum construction that is perfect for high-heat markets.

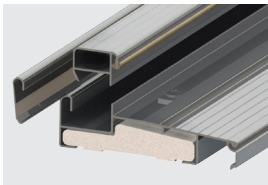
Built around the feature-packed Z-Series platform, you can choose the cap that works best for you to round out your Z-AA solution.

### START WITH INDUSTRY-LEADING STANDARD FEATURES.



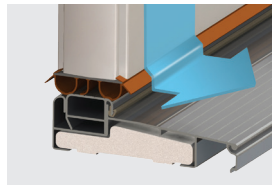
#### COMPOSITE SUBSTRATE

No more stuck doors or drafts because the Z-Series All-Aluminum Lineal substrate material is a waterproof composite that won't rack, warp or rot, ever.



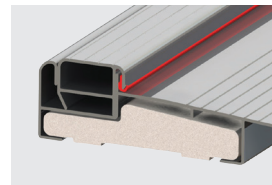
#### ALUMINUM CAP & NOSING

Aluminum cap and nosing finishes look great and resists wear and discoloration. Aluminum used in the cap and nosing provides durability and toughness in hot climate applications.



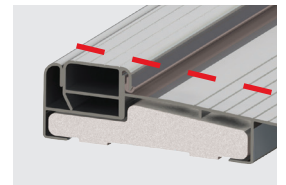
#### NARROW CAP

Because of the narrow threshold cap, the drip edge on the door bottom deflects water a full 1/4" in front of the cap, protecting against air and water infiltration.



#### HIGH DAM, INTEGRATED SEAL

A dual durometer cap seal overlaps the high dam. Both combine to provide a barrier to air and moisture even in the most extreme weather conditions.

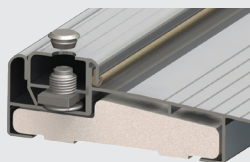


#### INFINITE CUTTABILITY

The Lineal substrate can be cut to fit any application need, with lengths up to 154" available.

### CHOOSE YOUR CAP SOLUTION. CHOOSE YOUR SILL PERFORMANCE.

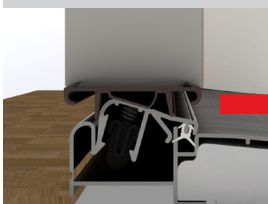
#### Z-AA ADJUSTABLE CAP



#### EASY ADJUSTMENTS

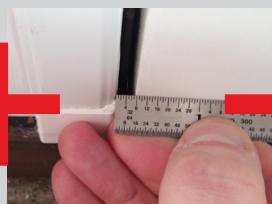
Easy-to-adjust screws along the length of the cap allowing simple adjustment over time to ensure a proper seal.

#### Z-AA ARTICULATING CAP



#### NEVER NEEDS ADJUSTMENT

Spring-loaded cap never needs adjustment. Not at install. Not at close in. Not ever.



#### UNCOMPROMISED SEALING

The real world is never perfect, but with Z-AC, that's not your problem. Z-AC seals even when margins are wide and corner pads go missing.



#### THE BEST PERFORMANCE

Unlike other sill systems, Z-AC has been tested and proven to deliver higher performance in protecting against air and water infiltration.



#### SAVE TIME AND MONEY

Z-AC's built-in performance saves time and money in real-world conditions, eliminating extra installation steps and costly service calls.

# Z-ALL ALUMINUM LINEAL SILL

## AVAILABILITY

The Z-All Aluminum Lineal Sill is available in 3-11/16" and 4-9/16" sill widths, inswing only.

STRUCTURE	Z-AA Lineal 3-11/16"	Z-AC AA Lineal 3-11/16"	Z-AA Lineal 4-9/16"	Z-AC AA Lineal 4-9/16"
Composite Substrate	✓	✓	✓	✓
Wood Substrate	✓	✓	✓	✓
Cuttability	Unlimited	Unlimited	Unlimited	Unlimited
Tileback Nosing	✗	✗	✗	✗
Sill Covers	✗	✗	✓	✓
Sidelites	✗	✗	✓	✓
DECK COLORS				
Mill	✓	✓	✓	✓
Bronze	✓	✓	✓	✓
CAP COLORS				
Mill	✓	✓	✓	✓
Bronze	✓	✓	✓	✓

CUTTABILITY			
SIZE	MIN	MAX	OTHER NOTES
2/6	Unlimited	30.5"	
2/8	Unlimited	32.3125"	Cuttable to 2/6.
2/10	Unlimited	34.3125"	
3/0	Unlimited	36.3125"	Cuttable to 2/8 & 2/10.
3/4-3/6	Unlimited	42.3125"	
5/0	Unlimited	62"	
5/4	Unlimited	66"	
6/0	Unlimited	74"	
0/10-3/0-0/10	Unlimited	61.5"	
1/0-3/0-1/0	Unlimited	65"	Cuttable to 0/10.
1/2-3/0-1/2	Unlimited	69"	Cuttable to 1/10.
1/4-3/0-1/4	Unlimited	74"	
2/6-2/6	Unlimited	62"	
2/8-2/8	Unlimited	66"	
3/0-3/0	Unlimited	74"	
3/0-3/0-3/0	Unlimited	113"	
3/0-3/0-3/0-3/0	Unlimited	154"	

✓ Standard/Available    ✓ Optional    ✗ Not Available



Continuous Sidelite



Sill Cover

### Aluminum Cap & Deck Colors

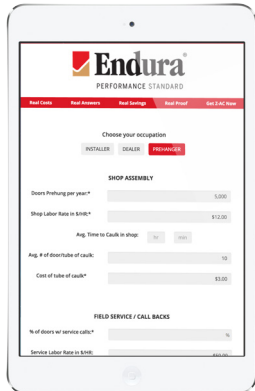


Mill

Bronze



Z-All Aluminum Lineal Substrate



## CALCULATE YOUR SAVINGS WITH THE Z-AC™ WEB APP

Are you and your customers throwing money out the door? When the real-world strikes, Z-AC never stops working for you (and your wallet) saving you time and money. Calculate your true costs and see how much Z-AC can save with the interactive Z-AC web app from Endura.

[www.ZACSAVES.com](http://www.ZACSAVES.com)

The information contained in this document is the confidential and proprietary information and trade secrets of Endura Products, Inc. Any disclosure, use or dissemination of such information without the express written permission of Endura Products, Inc. is strictly prohibited. Endura Products, Inc. also owns any and all intellectual property rights embodied in such information, including patent rights, copyrights, and trademark rights, and no license of any intellectual property right is intended, nor should any license be implied, as a result of the receipt of this document.

U.S. Patents: 8,413,383; 8,739,469; 9,428,954; D599,420; D632,556; D638,143; D701,323 and Patents Pending.  
Canadian Patents: 2,754,367; 2,847,449; D165,013; D165,014 and Patents Pending.

