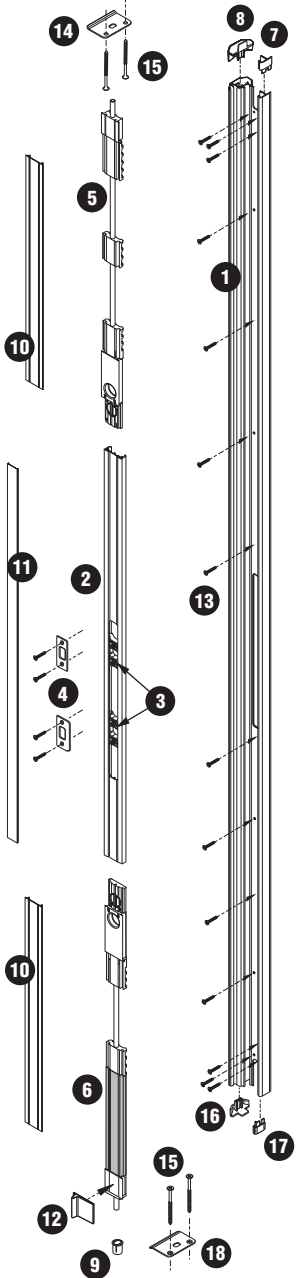


Ultimate Hurricane Astragal - Inswing and Outswing

Ultimate Hurricane Astragal Assembly



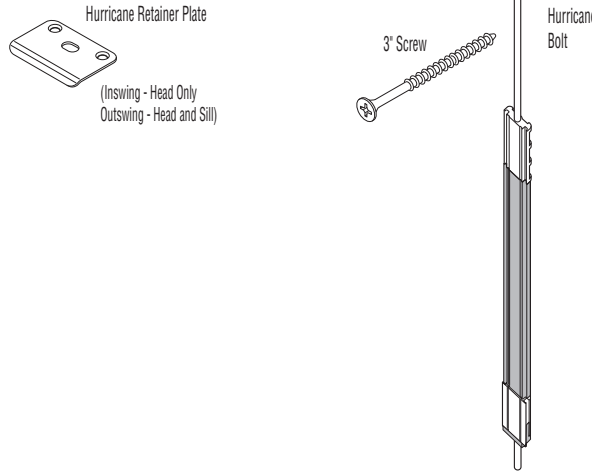
- Parts List**
- 1 Astragal Body
 - 2 Strike Support
 - 3 Strike & Deadbolt Retainer Assemblies
 - 4 Strike and Deadbolt Plates
 - 5 Upper Bolt (6/8 Only)
Upper Hurricane Bolt (8/0 Only)
 - 6 Lower Hurricane Bolt
 - 7 Upper Spacer Cap
 - 8 Upper Trim Cap
 - 9 Lower Retainer (inswing only)
 - 10 Bolt Covers (2)
 - 11 Strike Support Cover
 - 12 Corner Pad (inswing only)
 - 13 Screws (14)
 - 14 Hurricane Retainer Plate (inswing and outswing)
 - 15 3" Retainer Plate Screws (2)
 - 16 Lower Trim Cap (inswing or outswing version)
 - 17 Lower Spacer Cap
 - 18 Hurricane Retainer Plate (outswing only)

Follow steps
2 through **5**
for complete
installation details.

Exploded View Shown

Ultimate Astragal Hurricane Conversion Kit (Converts Ultimate Astragal to Ultimate Hurricane Astragal)

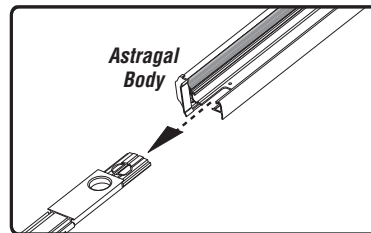
KIT CONTAINS



1 Remove and Replace Lower Bolt

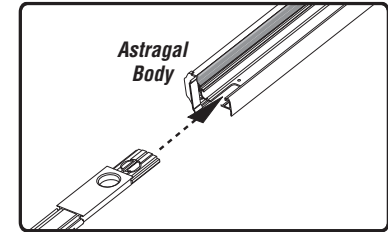
a.) Remove existing Ultimate Astragal Bolt

6/8 Astragals - Bottom Only
8/0 Astragals - Top and Bottom



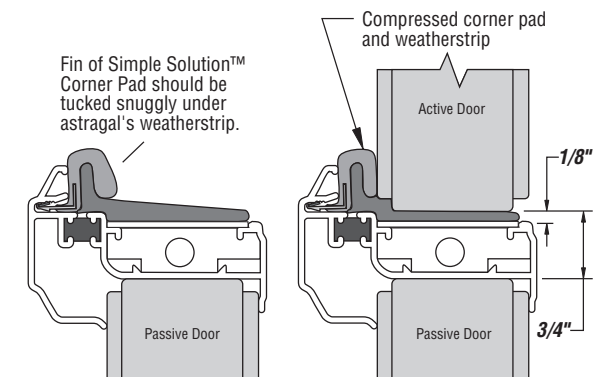
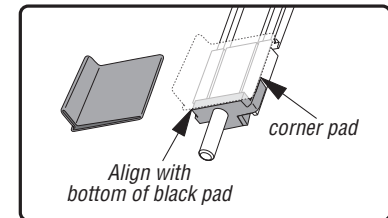
b.) Replace with Ultimate Hurricane Bolt

6/8 Astragals - Bottom Only
8/0 Astragals - Top and Bottom



c.) Position and attach Simple Solution Corner Pad (Inswing Only)

The Simple Solution™ Corner Pad should be positioned as shown with proper margins for optimum performance.

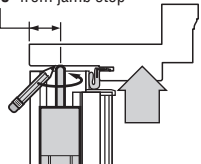


2 Position and Install Hurricane Retainer Plates

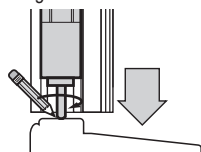
NOTE: Ensure door unit is anchored to rough opening and that all margins are proper.

INSWING

contact header approx.
7/8" from jamb stop

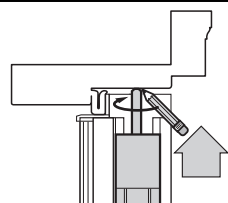


Close passive door until header weatherstrip is compressed. Push bolt pins to contact header and center of sill cap and mark for drilling retainer holes.

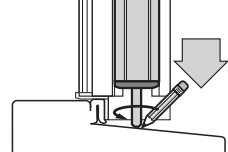


contact sill cap approx.
7/8" from back of cap nosing

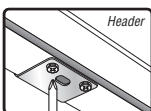
OUTSWING



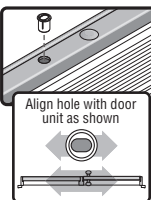
Close passive door until header weatherstrip is compressed. Push bolt pins to contact header and sill. Mark for drilling retainer holes.



INSWING



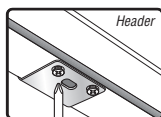
Header: Drill a 3/8" hole (1-3/8" deep minimum) into header where marked. Attach Hurricane Retainer Plate, orienting the long side of the hole to run the width of the door unit, and secure with 3" screws provided.



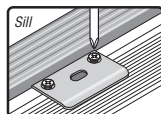
SILL:

Drill a 5/8" hole (1-3/8" deep minimum) in the sill at the marked location. Insert Lower Retainer, orienting the long side of the hole parallel to the sill cap (as shown) and tap into place with a mallet.

OUTSWING



Drill a 3/8" hole (1-3/8" deep minimum) into header where marked. Attach Hurricane Retainer Plate, orienting the long side of the hole to run the width of the door unit, and secure with 3" screws provided.

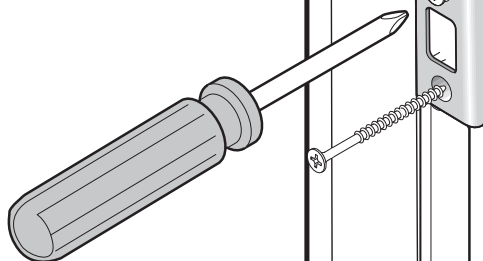


Drill a 3/8" hole (1-3/8" deep minimum) into sill where marked. Attach Hurricane Retainer Plate, orienting the long side of the hole to run the width of the door unit, and secure with 3" screws provided.

3 Position Strike and Deadbolt Plates

Close both doors. Mark desired positions for strike and deadbolt plates on door edge.

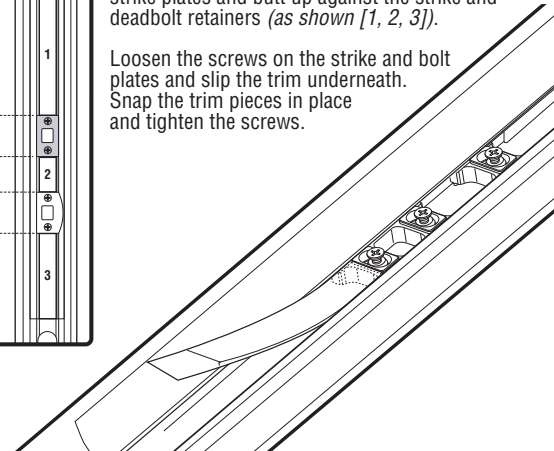
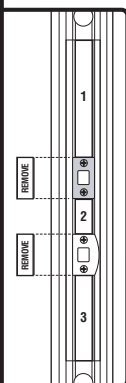
Remove standard, short plate screws provided with astragal. Replace with 3" screws. Tighten to secure plates.



4 Install Trim Covers

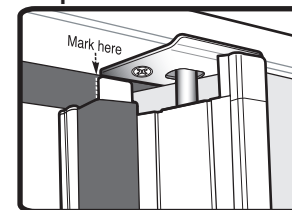
Cut the Trim Covers so that the ends fit under the strike plates and butt up against the strike and deadbolt retainers (as shown [1, 2, 3]).

Loosen the screws on the strike and bolt plates and slip the trim underneath. Snap the trim pieces in place and tighten the screws.



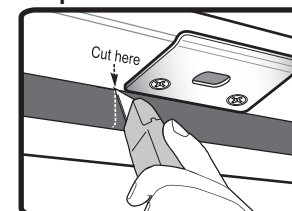
5 Slice Weatherstrip at Header

Step 1:



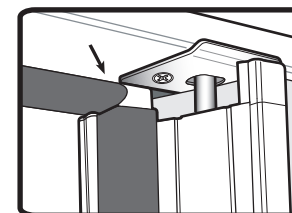
With inactive door closed, use a sharp utility knife to mark the location on the header weatherstrip to be cut. The cut should be in line with the active door side of the trim cap fin.

Step 2:



Open the inactive door, then use the utility knife to cut the header weatherstrip on the mark made in Step 1.

Result:



Header weatherstrip should now clear the trim cap fin and contact the active door maintaining the integrity of the seal.

 **Endura**

Endura Products, inc.
8817 West Market St.
Colfax, NC 27235
(800) 334-2006

www.enduraproducts.com