

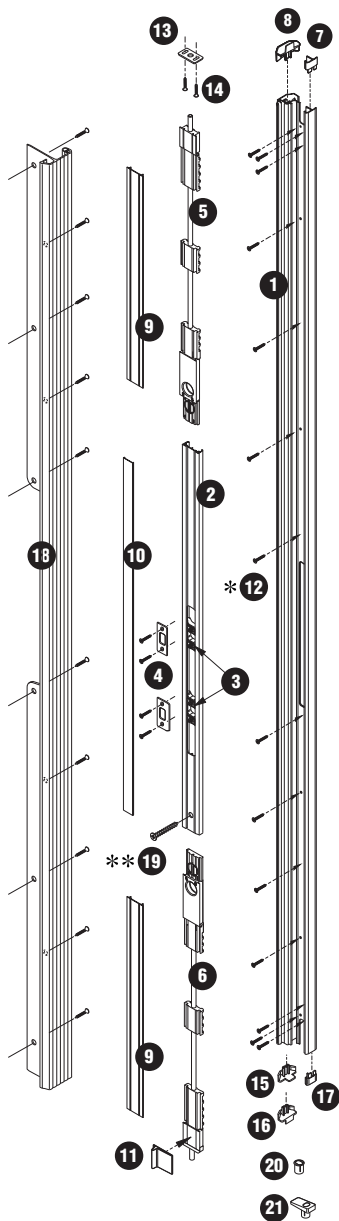
# Pre-Hanger Installation Instructions

## Ultimate Astragal

### Parts List

### Exploded View

- 1 Astragal Body
- 2 Strike Support
- 3 Strike & Deadbolt Retainers
- 4 Strike and Deadbolt Plates and screws
- 5 Upper Bolt
- 6 Lower Bolt
- 7 Upper Spacer Cap
- 8 Upper Trim Cap
- 9 Bolt Covers (2)
- 10 Strike Support Cover
- 11 Simple Solution™ Corner Pad
- 12 Screws (14)
- 13 Upper Retainer
- 14 Brass Wood Screws (2)
- 15 Lower Trim Cap (inswing)
- 16 Lower Trim Cap (outswing)
- 17 Lower Spacer Cap
- 18 Security Flange and screws (outswing)
- 19 Strike Support Anchor Screw
- 20 Lower Retainer (inswing)
- 21 Lower Retainer (outswing)



### Universal Screw Pack



\*\* (1) 1-5/8" screw for strike support



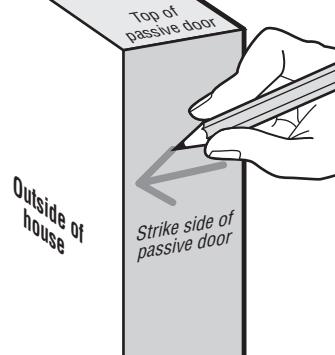
\*(18) 1" mounting screw (6/8 doors only require 14)

Wood edge doors require wood screws and steel edge doors require type AB sheet metal screws.

Verify whether the mounting screws that came with your order suit your door type.

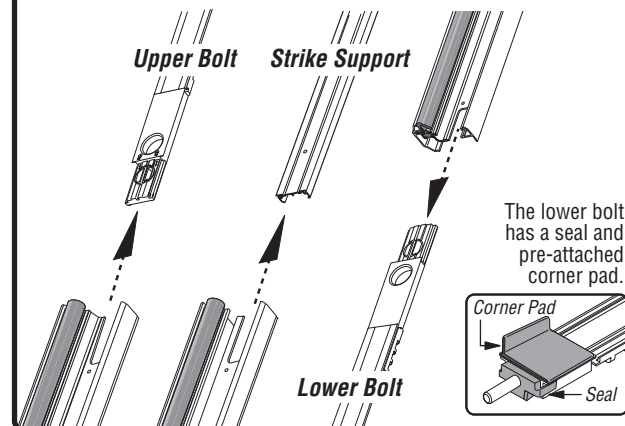
## 1 Determine Astragal Placement

Mark the strike side of the passive door with an arrow, pointed to the exterior side of the door, about 1-1/2" from the top of the door.



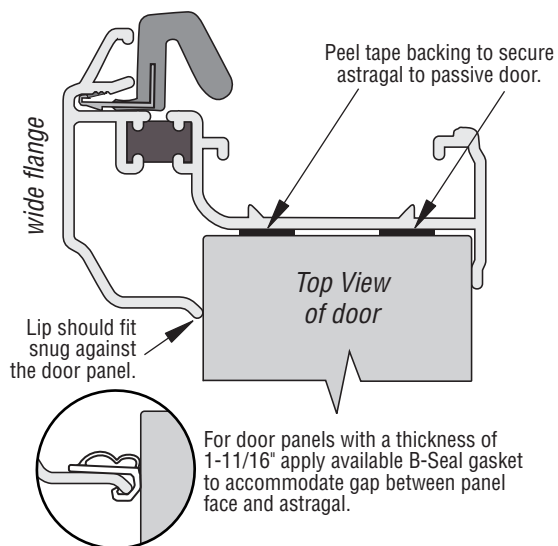
## 2 Remove Flush Bolts & Strike Support

Slide both bolts and strike support out of the Astragal Body.



## 3 Position Astragal & Attach to Passive Door

- 3A** For inswing doors the wide flange goes to the **outside** of the house.  
 For outswing doors the wide flange goes to the **inside** of the house.

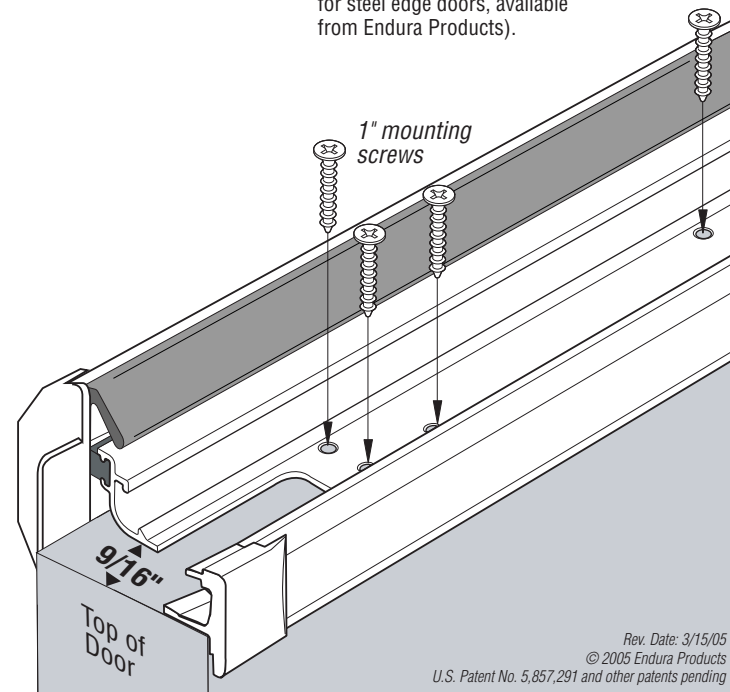


- 3B** Position top of astragal body **9/16"** from top of door (Applies to both inswing and outswing doors).

### 3C

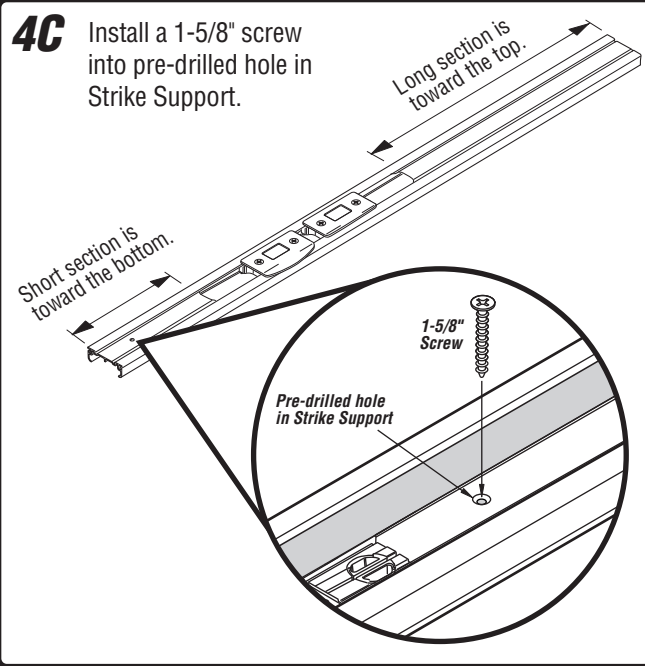
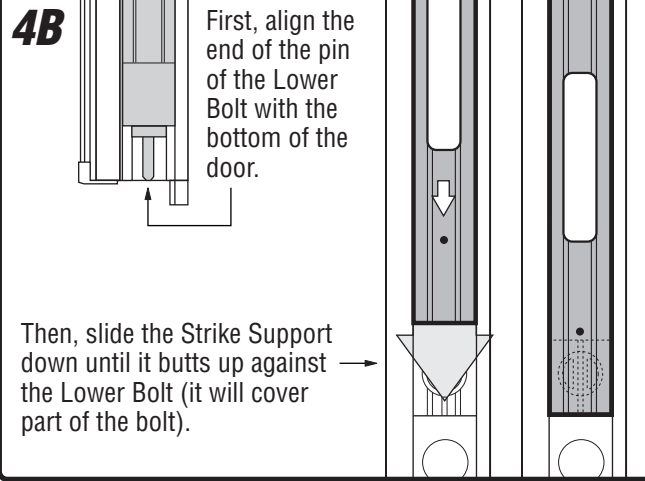
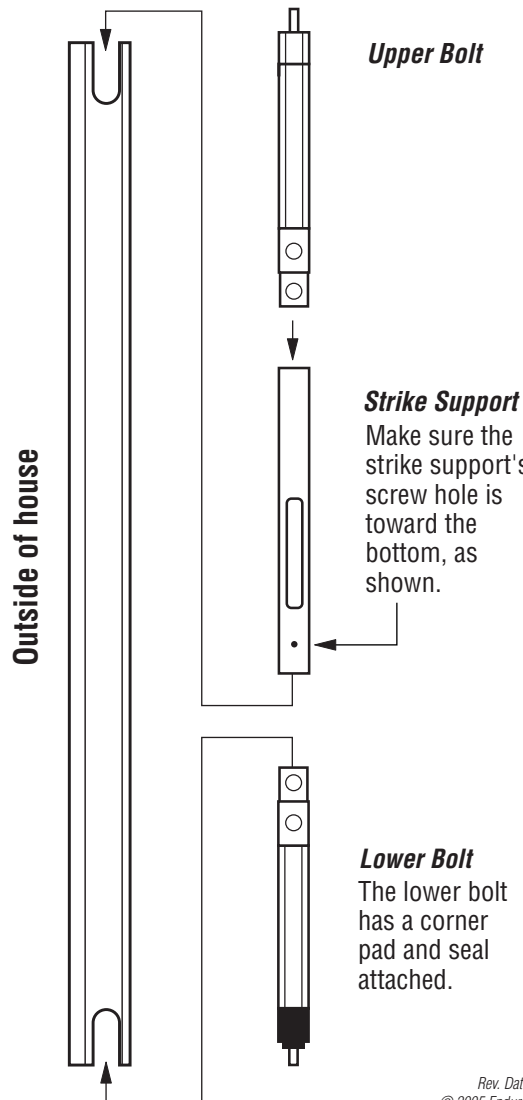
Insert 1" mounting screws through **ALL** pre-drilled holes.

(Use type AB sheet metal screws for steel edge doors, available from Endura Products).



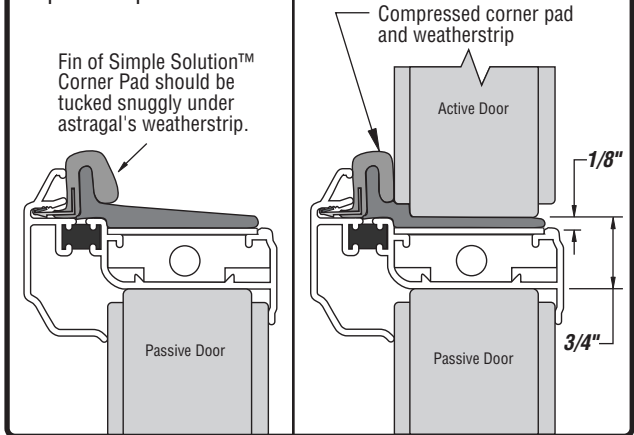
**4 Reinsert Flush Bolts and Secure Strike Support**

**4A** Once the astragal body is secured to the passive door, slide the Strike Support, Upper Bolt and Lower Bolt back into the astragal.



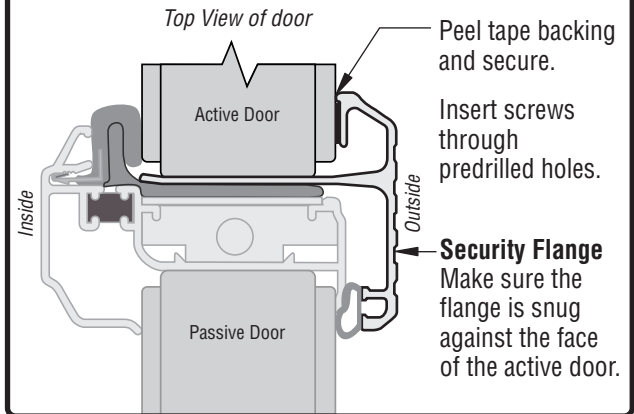
**5 Proper Corner Pad Positioning & Panel Margins**

The Simple Solution™ Corner Pad should be positioned as shown with proper margins for optimum performance.



**6 Optional Security Flange (Outswing only)**

Position the Security Flange on the Active Door facing the **outside** of the house.



Rev. Date: 1/25/05  
 © 2005 Endura Products  
 U.S. Patent No. 5,857,291 and other patents pending

**IMPORTANT:** Prehanger, attach Astragal Component Pack to face of inactive door.