

Outswing Conversion Instructions

Ultimate Astragal / Multi-Point Compatible Astragal



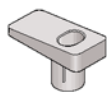
800.334.2006

8817 West Market Street
Colfax, NC 27235

Outswing Conversion Kit Parts:



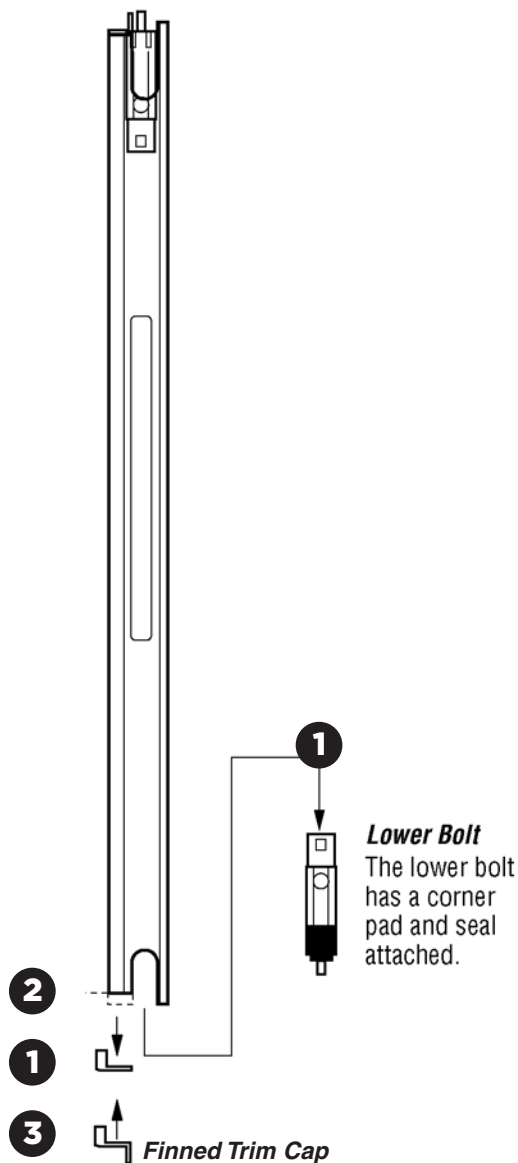
Finned Trim Cap



Outswing Flush Bolt Pin Retainer

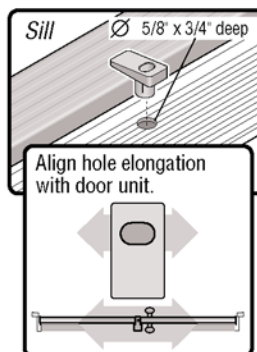
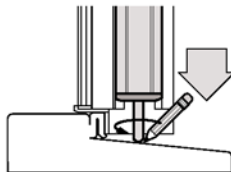
Outswing Conversion Steps:

- 1 Remove bottom trim cap and flush bolt.
- 2 Cut 9/16" from bottom of the large side of the astragal. Remove all chips and debris.
- 3 Replace bottom flush bolt and trim cap (**substituting the large finned trim cap for the flat inswing cap at bottom of astragal**)
- 4 Hang astragal on door (**reference outswing astragal installation instructions**) and drill hole in sill for outswing flush bolt pin retainer.



4 Drilling sill for outswing retainer

Close door with astragal until header weatherstrip is compressed. Push bolt pins to contact the sill. Mark for drilling retainer hole.



Drill a \varnothing 5/8" hole (3/4" deep minimum) in the sill at the marked location. Insert Lower Retainer, orienting the long side of the hole parallel to the sill cap (as shown) and tap into place with a mallet.

Rev. Date 7/2/07

©2007 Endura Products

US Patent No. 5,857,291 and other patents pending