

# Installation

## Instructions for



## Door Systems

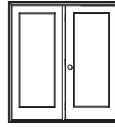
These instructions apply to the following Force 5® Certified Systems:



Single Doors



Single & Double Continuous Sidelite Units



French & Patio Units

### Checklist for Force 5® Compliance

Force 5® Warranty Coverage is only valid if certain steps are taken during installation. Those steps are listed below, and are shown in **bold type** beside one of these "F5" symbols.

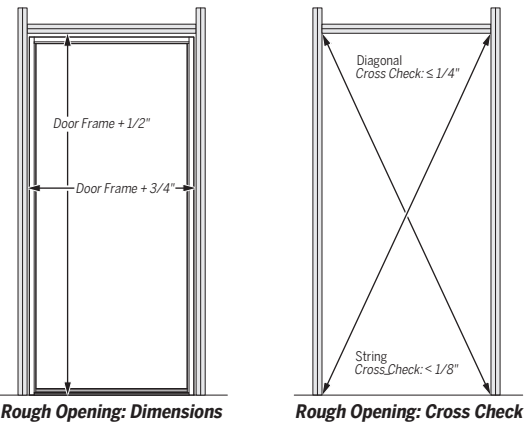


- Clean, dry, level, and solid subfloor (1)**
- Three beads of caulk under the Sill (2)**
- Ensure consistent margins (5)**
- Adjust the Sill Cap or Door Bottom (8)**
- Install Simple Solution® Corner Pads (8)**
- Caulk corner of Sill and Jamb (9)**
- Position & Install Astragal (French Units)(10)**
- Caulk around door unit and use flashing (11)**

**Note:** This instruction assumes that an appropriate weather-resistive barrier, as required by local building codes, is installed per manufacturer's instructions around the rough opening prior to door installation.

**Note:** This instruction applies to both inswing and outswing doors, except where noted.

## 1 Preparing the Rough Opening



Rough Opening: Dimensions

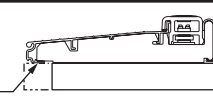
Rough Opening: Cross Check

Rough Opening Dimensions: Height = Door Frame + 1/2"  
Width = Door Frame + 3/4"

Diagonal Distances should be within 1/4" of each other.

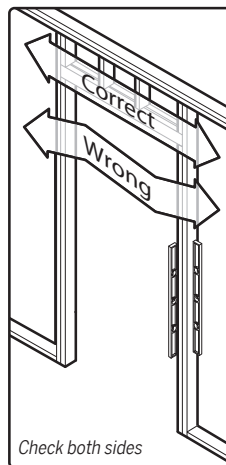
Diagonally placed strings should be within 1/8" of each other at the center.

Ensure support underneath sill front edge overhang. If sill front edge is not properly supported, build out structure to support it.



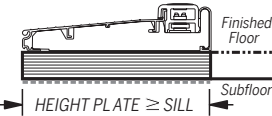
The rough opening should be flashed according to local building code requirements.

- ② Are the walls straight?
- ② Is the rough opening framing plumb & level?
- ② **Is the subfloor clean, dry, level and solid?**

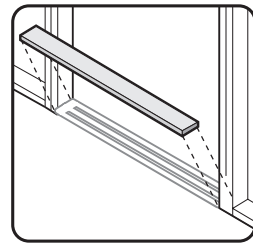


If you are using a height plate to bring the sill up to the level of the finished floor covering:

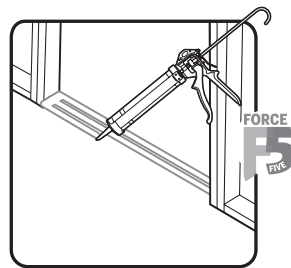
Be sure it that is at least as wide as the sill and as long as the rough opening.



Be sure to caulk thoroughly under and around the height plate.

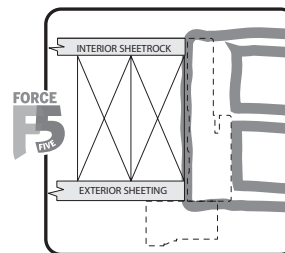


## 2 Caulking the Rough Opening

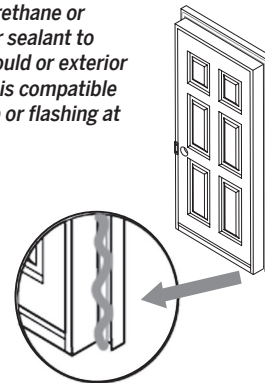


Put three heavy beads (1/2" wide) of polyurethane or 100% silicone sealant or polymer on the subfloor or height plate as shown.

Put enough caulk at the ends to completely cover the bottom of the side jamb.

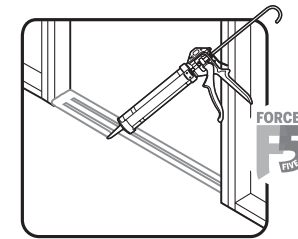


Apply 1/2" bead of polyurethane or 100% silicone or polymer sealant to sheathing side of brickmould or exterior trim (ensure that sealant is compatible with sheathing, housewrap or flashing at rough opening).

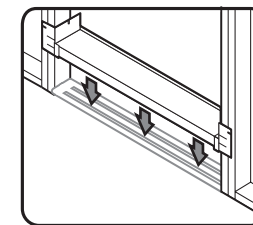


## 2a Optional - Sill Pan

A SureSill sill pan may be used in Force 5 Systems, but is not required.

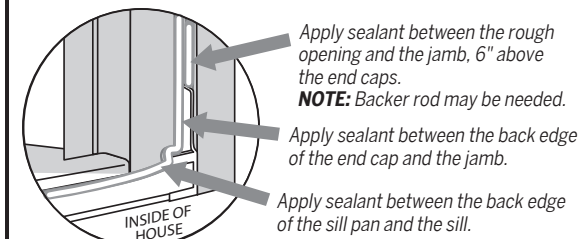


1. Put three heavy beads (1/2" wide) of polyurethane or 100% silicone sealant on the subfloor or height plate as shown.



2. Place and secure SureSill™ Pan according to separately issued Endura Instructions.

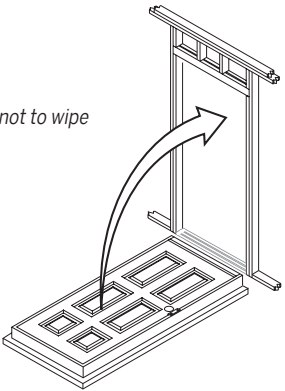
3. Seal Interior Edges  
Perform after door unit is anchored into rough opening.



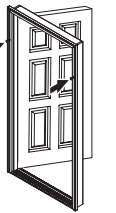
- Apply sealant between the rough opening and the jamb, 6" above the end caps.
- NOTE:** Backer rod may be needed.
- Apply sealant between the back edge of the end cap and the jamb.
- Apply sealant between the back edge of the sill pan and the sill.

## 3 Position Unit in Rough Opening

Pivot into position taking care not to wipe away subfloor caulking.



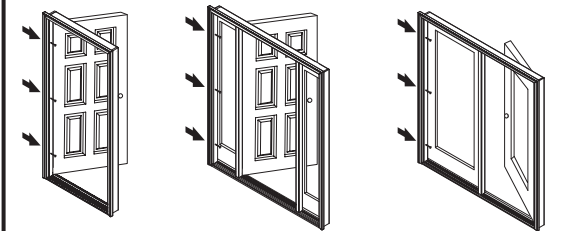
Temporarily secure using finishing nails through the brickmould. Do not fully set nails.



Ensure that unit is plumb in each direction.

Ensure that inside edge of door unit projects 1/2" past stud interior surface for proper alignment with drywall.

Place fasteners through thick part of jambs as shown, just above the hinge positions on the hinge jamb. Do not fully seat. Use 3 screws for 7/0 & shorter units, & 4 screws for 7/5 & taller units.



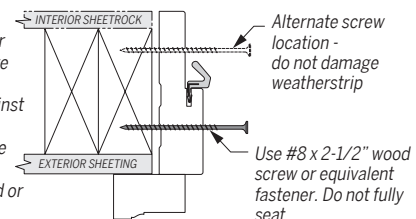
Single Units:  
Fasten Hinge Jamb first

Sidelite Units:  
Fasten Sidelite Jamb on Hinge Side first

French & Patio Units:  
Fasten Jamb on fixed or passive side panel first

For systems with brickmould or other exterior trim, assure that back side of moulding is up against exterior sheathing.

**Note:** Do not secure door unit only through brickmould or other exterior trim.



Alternate screw location - do not damage weatherstrip

Use #8 x 2-1/2" wood screw or equivalent fastener. Do not fully seat.

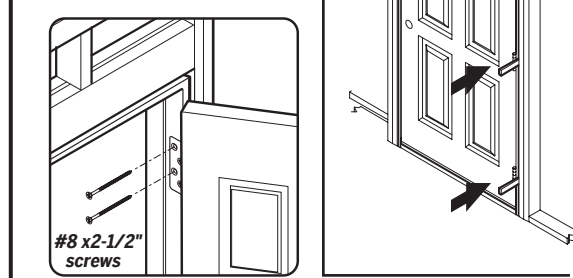
**Note:** Door units installed in high velocity wind zones will require anchoring according to approved requirements.

#### 4 Shim and Secure Hinge Jamb

Temporarily install Simple Solution® Pads but do not remove adhesive backing paper yet (see Step 8 for pad positioning).

Check hinge jamb for plumb in both directions with a 6-foot level.

Place shims behind jamb hinges. Adjust shims to take up space between jamb and rough opening. **Note:** In some cases, the rough opening is plumb and allows the door jamb to be placed against the rough opening. Shims on this side will not be required.

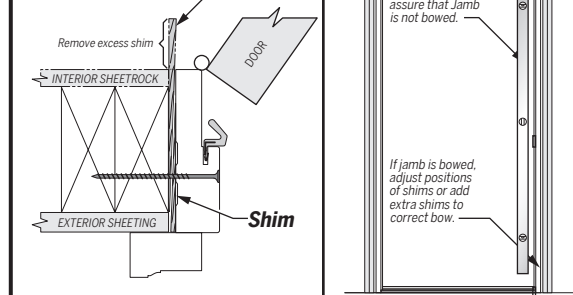


On top hinge, replace 2 short screws closest to weatherstrip with 8 x 2-1/2" screws.

On all other hinges, replace top screw closest to weatherstrip.



Set each jamb screw through shims, then remove excess shim.



**Note:** Make sure the jamb is not bowed. Adjust or apply additional shims as necessary.

#### 5 Shim and Secure Opposite Jamb

Check jamb for plumb in both directions with a six foot or longer level.

Install shims across from each hinge and adjust to ensure a 1/8" consistent margin between door panel and jamb.

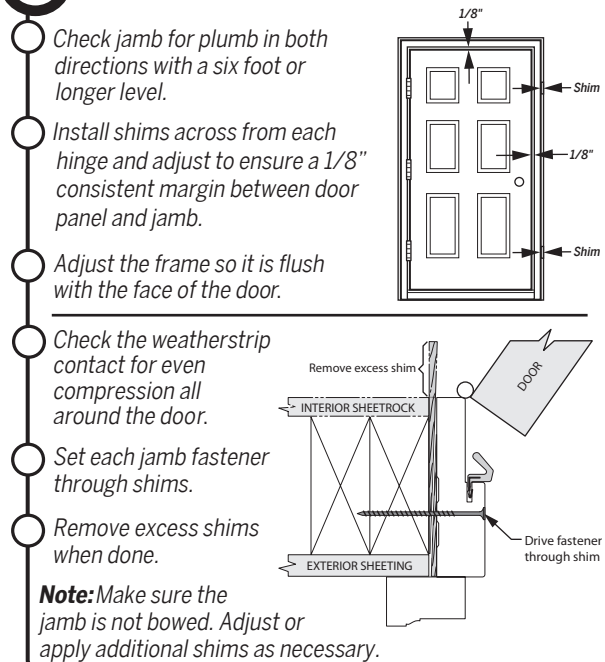
Adjust the frame so it is flush with the face of the door.

Check the weatherstrip contact for even compression all around the door.

Set each jamb fastener through shims.

Remove excess shims when done.

**Note:** Make sure the jamb is not bowed. Adjust or apply additional shims as necessary.

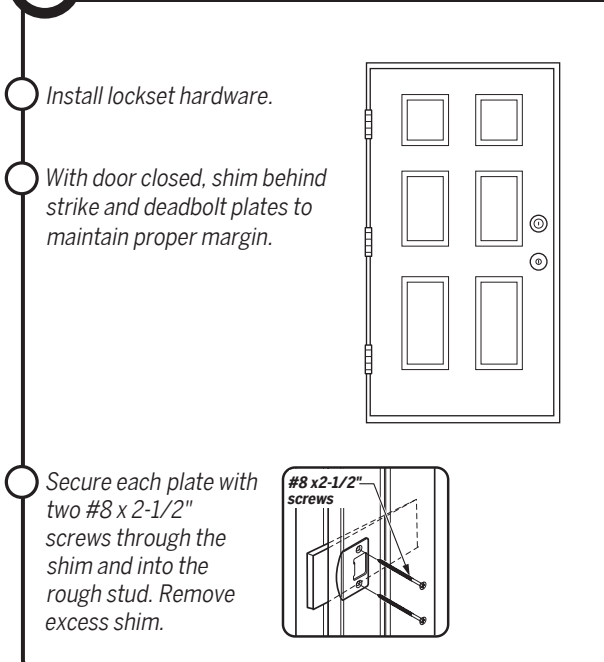


#### 6 Securing Lockset Hardware

Install lockset hardware.

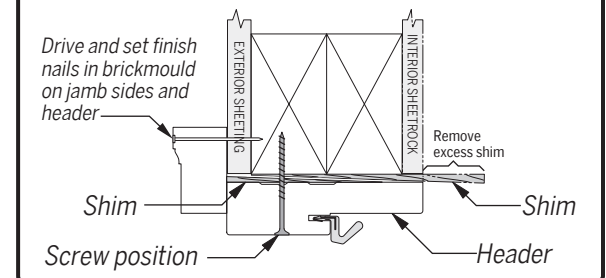
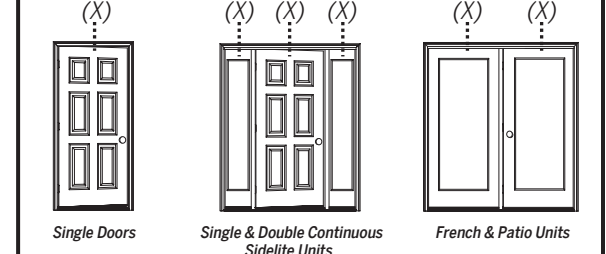
With door closed, shim behind strike and deadbolt plates to maintain proper margin.

Secure each plate with two #8 x 2-1/2" screws through the shim and into the rough stud. Remove excess shim.



#### 7 Shim and Secure Header

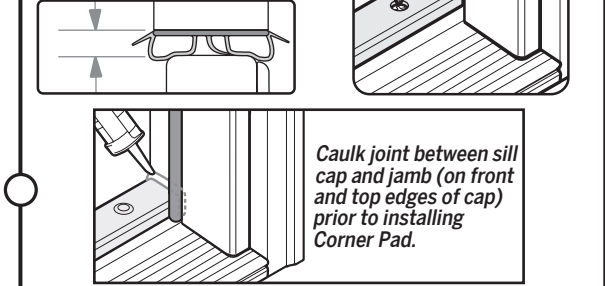
Secure fasteners through thick part of header. Use shims at each location indicated by (X) to maintain proper margin.



#### 8 Adjust Sill and Check Corner Pads

Remove temporarily installed Simple Solution® Corner Pads.

If necessary, adjust the sill cap to ensure consistent spacing between panel and cap.



Verify proper installation of Simple Solution® Corner Pads (remove backing paper to expose adhesive). The raised fin of the corner pad needs to be tucked behind the weatherstrip as shown (Both strike and hinge sides). Pads not required on outswing jambs.

The Simple Solution® Corner Pad must also contact the top surface of the sill cap.



#### 9 Caulking Sill

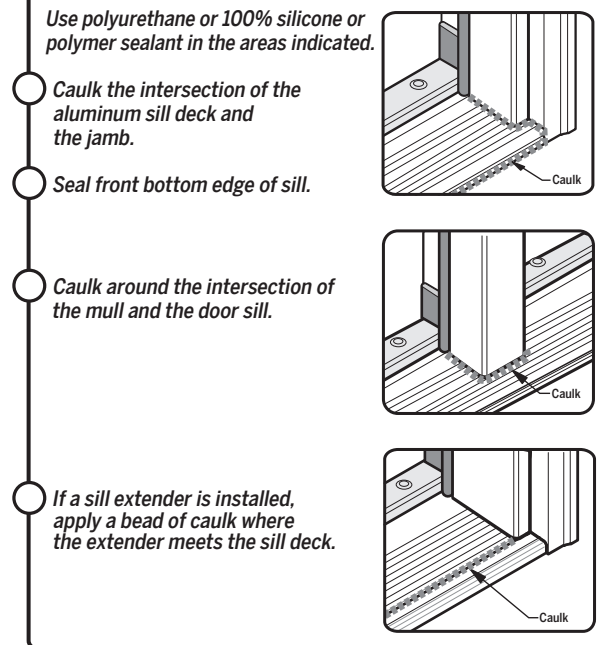
Use polyurethane or 100% silicone or polymer sealant in the areas indicated.

Caulk the intersection of the aluminum sill deck and the jamb.

Seal front bottom edge of sill.

Caulk around the intersection of the mull and the door sill.

If a sill extender is installed, apply a bead of caulk where the extender meets the sill deck.



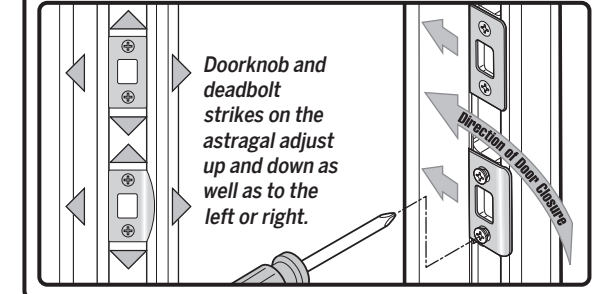
#### 10 Astragal Positioning (French Units Only)

Close the passive door to verify that it is in the desired position.

Push bolt pins to contact header and sill, then mark positions for retainer holes.

Complete installation and positioning of astragal according to Endura's "Field Installation Instructions" provided with the French unit.

The strikes should be adjusted in the direction of door closure to assure that the strikes pull the door up to the weatherstrip tightly.



#### 11 Weatherproofing

Caulk around the entire unit on weather-exposed side between brickmould and siding or sheathing.

Caulk at joint of brickmould and jamb / header

Install flashing above protruding header trim in shingle lap fashion, or per manufacturer's instructions.

Insulate the gap between the frame and rough opening according to local code requirements or building practices.

