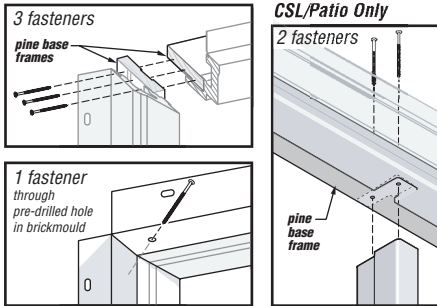
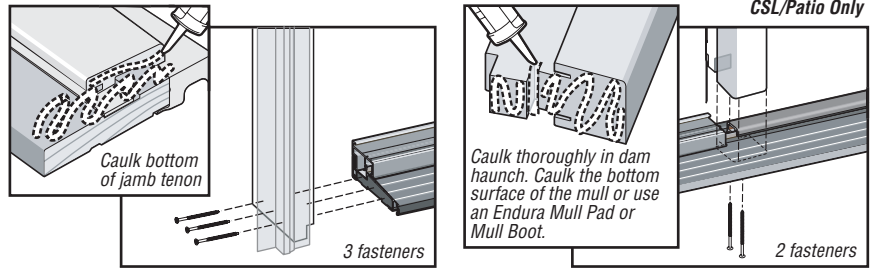


Pre-Finished Frame Unit Assembly Instructions

1 Frame Assembly

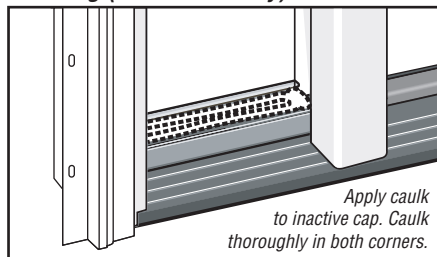


2 Caulking & Sill Attachment

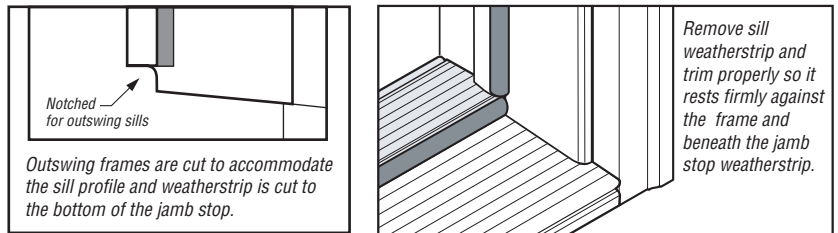


3 Inactive Doors & Sidelites

Caulking (CSL/Patio Only)

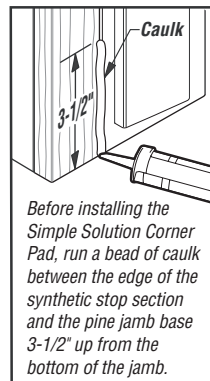


Outswing Applications

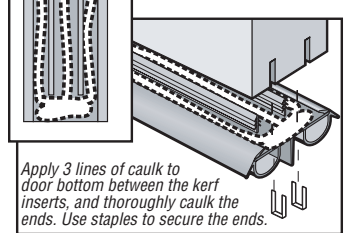


4 Install Corner Pads & Door Bottoms

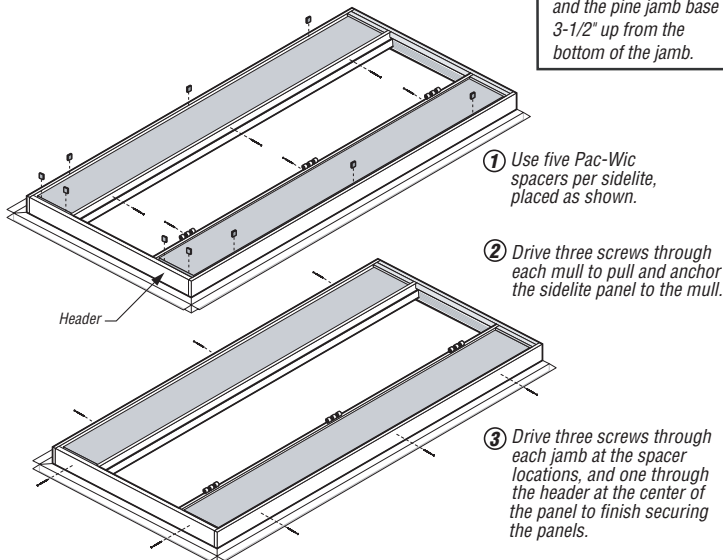
Corner Pads



Door Bottoms

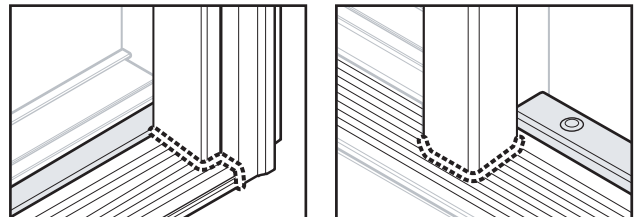


Panel Spacing (CSL Unit Only)



5 Final Caulking

Caulk at the corner where the aluminum of the sill meets the frame components. Do not caulk on top of the adjustable threshold cap.



Be sure to include the corner pads with instructions for their proper positioning.

6 Secure the Door Frame for Shipping

Apply Endura's Door Frame Alignment Bracket to prevent the door frame from racking and breaking the caulked seals during shipping and installation.

NOTE: Ensure consistent compression of the weatherstrip. Warped door panels can result in inconsistent compression and loss of seal. Use only true and flat door slabs.

Attach Pre-Finished Frame Unit Installation Instructions to the door unit.

Endura
It's how doors work.™

For more information, contact Endura Products, Inc.:
P.O. BOX 8908, GREENSBORO, NC 27419-0908
(800) 334-2006
www.enduraproducts.com