

# Field Installation Instructions

## Ultimate Astragal Outswing

**Endura**  
DOOR COMPONENT SYSTEMS  
800.334.2006  
8817 West Market Street  
Colfax, NC 27235

**NOTE:** The astragal component pack will contain both a long and short cup for assembly. See recommended and alternative installation methods below for additional details.

### Recommended Installation Method (Steps 1-4)

Utilizing long cup

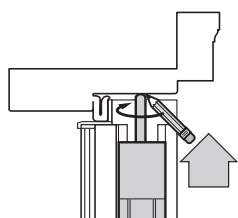
### Alternative Installation Method (Use steps 1a, 1b then proceed to 2,3,4)

Utilizing short cup

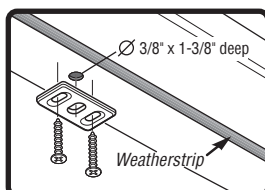
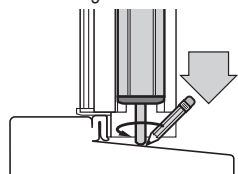
**WARNING:** If you choose the alternative installation method, this will void your warranty.

## 1 Position and Install Bolt Retainers

**NOTE:** To insure accurate hole locations for the astragal bolt retainers, first properly install corner pad on door hinge jambs to establish proper jamb side margins.

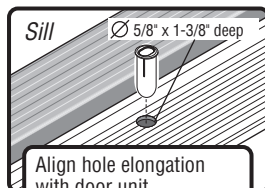


Close passive door until header weatherstrip is compressed. Push bolt pins to contact header and sill. Mark for drilling retainer holes.



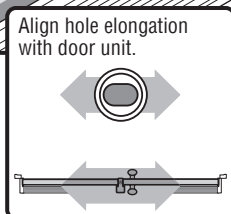
#### HEADER:

Drill a Ø 3/8" hole (1-3/8" deep minimum) into the header where marked. Attach the Upper Retainer with screws provided.



#### SILL:

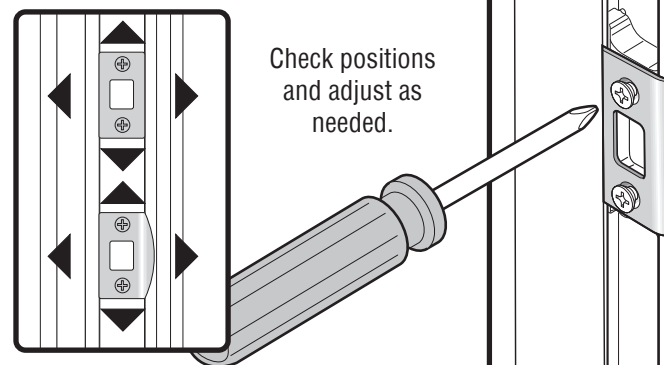
Drill a Ø 5/8" hole (1-3/8" deep minimum) in the sill at the marked location. Apply a bed of sealant to bottom of drilled hole. Insert Lower Retainer, orienting the long side of the hole parallel to the sill cap (as shown) and tap into place with a mallet.



## 2 Position Strike and Deadbolt Plates

Close both doors. Mark desired positions for strike and deadbolt plates. Loosen the retainer screws. Place the strike and deadbolt plates into position and tighten the screws.

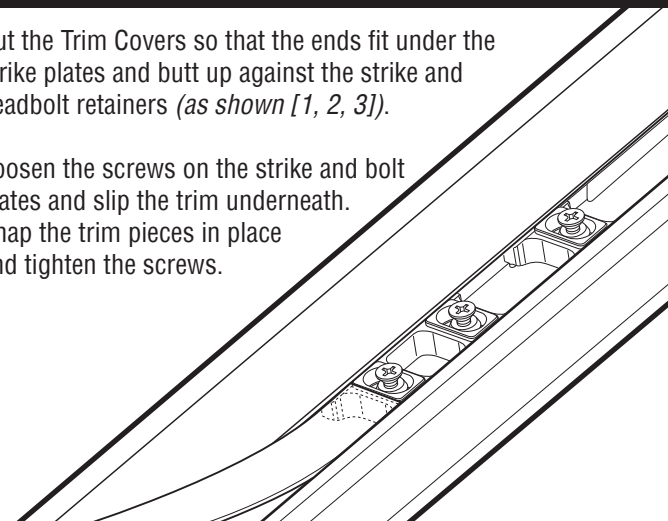
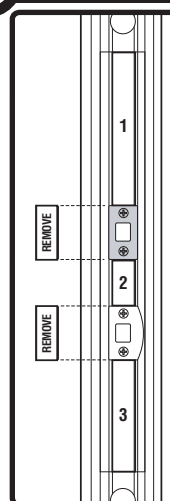
**Only use the screws that came in the retainers!**  
**Do not use other screws!**



## 3 Install Trim Covers

Cut the Trim Covers so that the ends fit under the strike plates and butt up against the strike and deadbolt retainers (as shown [1, 2, 3]).

Loosen the screws on the strike and bolt plates and slip the trim underneath. Snap the trim pieces in place and tighten the screws.

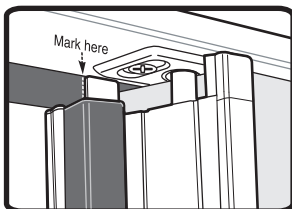


# Field Installation Instructions

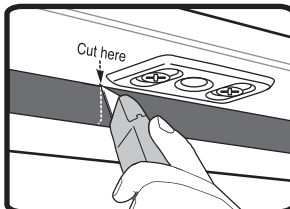
## Ultimate Astragal Outswing

**Endura**  
DOOR COMPONENT SYSTEMS  
800.334.2006  
8817 West Market Street  
Colfax, NC 27235

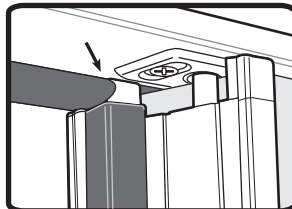
### 4 Slice Weatherstrip at Header



**Step 1:**  
With inactive door closed, use a sharp utility knife to mark the location on the header weatherstrip to be cut. The cut should be in line with the active door side of the trim cap fin.



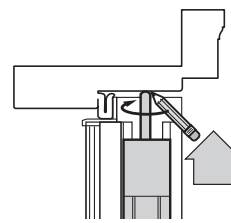
**Step 2:**  
Open the inactive door, then use the utility knife to cut the header weatherstrip on the mark made in Step 1.



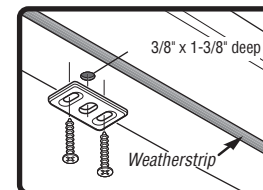
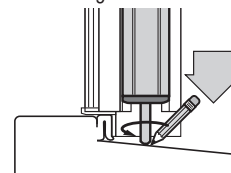
**Result:**  
Header weatherstrip should now clear the trim cap fin and contact the active door maintaining the integrity of the seal.

### 1a Position and Install Bolt Retainers

**NOTE:** To insure accurate hole locations for the astragal bolt retainers, first properly install corner pad on door hinge jambs to establish proper jamb side margins.

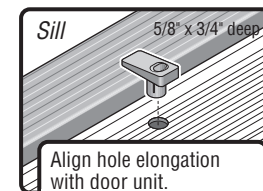


Close passive door until header weatherstrip is compressed. Push bolt pins to contact header and sill. Mark for drilling retainer holes.



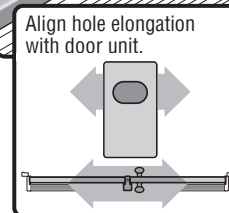
#### HEADER:

Drill a  $\varnothing$  3/8" hole (1-3/8" deep minimum) into the header where marked. Attach the Upper Retainer with screws provided.



#### SILL:

Drill a  $\varnothing$  5/8" hole (3/4" deep minimum) in the sill at the marked location. Apply a bed of sealant to bottom of drilled hole. Insert Lower Retainer, orienting the long side of the hole parallel to the sill cap (as shown) and tap into place with a mallet.

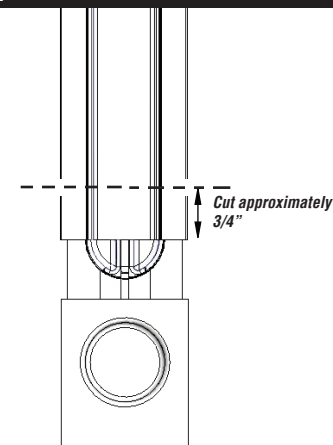


### 1b Do Not Cut More Than 3/4" Off Strike Support

If you choose to use your locking mechanism when using the short cup the strike support must be cut as follows:

- Cut 3/4" inch off strike support

**Note:** If you cut beyond 3/4" inch then you risk the bolt becoming disengaged with the strike support.



**NOTE:** Steps 1a and 1b are for the alternative installation method that utilizes the short cup. Using this method will void your warranty.